

# AMERICAN INSTITUTE OF PROFESSIONAL GEOLOGISTS

## *Northeast Section* **NEWSLETTER** *Autumn 2021* *As published on 9/24/2021*

***Angelo Tagliacozzo Memorial Geological Scholarship  
35th Year Retrospective ([Pg. 22](#))  
By Dennis McGrath***



**VIRTUAL ONLINE  
2-HOUR DRONE  
SHORT COURSE  
OCTOBER 21  
10AM-NOON  
[REGISTER HERE](#)  
[PAGE 64](#)**

**THE  
CARBONIFEROUS  
HAS GONE MISSING!  
[PAGE 34](#)**



**FALL MEETING  
OCTOBER 13  
@Growler & Grill  
in Nanuet, NY  
[REGISTER HERE](#)  
[NOW](#)  
[PAGE 77](#)**

**THE BADLANDS  
[PAGE 12](#)**

## EXCELLENCE ON EVERY LEVEL™

CASCADe provides a full range of environmental and geotechnical drilling, site investigation and characterization, and environmental remediation technologies. Our vision is to integrate technology, safety, sustainability and human potential to tackle the challenging environmental and geotechnical issues facing our clients.

## YOUR PARTNER FROM CONCEPT TO CLEAN UP

### DRILLING

environmental, geotechnical, utility  
clearance, IDW, sonic, auger, rotary, direct  
push

### SITE CHARACTERIZATION

high resolution site characterization,  
sampling, data visualization, MHPT, UVOST,  
CORE™™™, WATERLOG™™™, OIP™™™

### REMEDIATION

in situ, ex situ, collaborative design,  
thermal, chemical, biological,  
emplacement

### CONTACT

#### ADT

Environmental &  
Geotechnical Drilling  
**Bill Poupis**  
516-616-6026 EXT 105  
wpoupis@aquiferdrilling.com

#### CASCADe

Strategic Account Manager  
**Jay Boland**  
M: 413-329-7525  
jboland@cascade-env.com

VISIT US TODAY AT [WWW.CASCADe-ENV.COM](http://WWW.CASCADe-ENV.COM) TO LEARN MORE

With Cascade offices across the United States, subsidiaries and international partners, we deliver reliable services **nationwide.**

# DRILEX

## ENVIRONMENTAL



### **Drilex Environmental is one of New England's premier drilling companies**

Drilex Environmental was established in 1995 and is one of New England's fastest growing, premier, full service Drilling and Environmental Construction companies. We are a quality drilling company, able to meet the ever changing needs of our clients.

[www.drilexenv.com](http://www.drilexenv.com)



Hartwell Business Park • 127 Hartwell Street • West Boylston, MA  
508-835-6724 • Fax: 508-835-6734

# AIPG NORTHEAST SECTION NEWSLETTER

## AUTUMN 2021 EDITION No. 165

PUBLISHED BY THE NORTHEAST SECTION OF THE AMERICAN  
INSTITUTE OF PROFESSIONAL GEOLOGISTS

### TABLE OF CONTENTS:

2021 NE/AIPG Executive Committee Directory .....	<u>5</u>
2021 Executive Committee Meeting Schedule .....	<u>7</u>
2021 Index of Advertisers .....	<u>8-9</u>
Presidential Ramblings .....	<u>11</u>
The Badlands .....	<u>12</u>
ATMG Scholarship Thank You Letter .....	<u>20</u>
Angelo Tagliacozzo Scholarship 35th Anniversary Retrospective .....	<u>22</u>
The Carboniferous Has Gone Missing... and so Has the Permian! .....	<u>34</u>
ExCom Meeting Minutes for March and May .....	<u>42</u>
AIPG Mission .....	<u>57</u>
Angelo Tagliacozzo Photographs .....	<u>67</u>
Darwin's Arch Collapse .....	<u>72</u>
Piggybacking: Service Expanded .....	<u>77</u>
NE/AIPG 2021 Publication Schedule .....	<u>78</u>
ATMG Scholarship List of Contributors .....	<u>79-80</u>
ATMG Scholarship Overview .....	<u>81</u>
Angelo Tagliacozzo Scholarship Perpetual Trust Fund Contribution Form <i>(Please Contribute Now!)</i> .....	<u>82</u>

#### NEWSLETTER EDITORS

Kim Burger  
Roux Environmental Engineering  
and Geology, D.P.C.  
209 Shafter Street  
Islandia, NY 11749  
631-780-2956 (Cell)  
kburger@rouxinc.com

Brandon Tufano  
Integral Consulting, Inc.  
285 Century Place, Suite 190  
Louisville, CO 80027  
570-702-9992 (Cell)  
btufano@integral-corp.co



#### PUBLISHER & ADVERTISING MANAGER

Dick Young  
Consulting Geologists, LLC  
179 Intervale Road  
Parsippany, NJ 07054  
973-335-2289 (Office)  
973-335-9799 (Fax)  
ryoungnj@aol.com

The Newsletter of the Northeast Section of the American Institute of Professional Geologists is digitally published four times annually at [https://ne.aipg.org/Newsletter\\_copy](https://ne.aipg.org/Newsletter_copy) and [www.issuu.com/neaipg/docs](http://www.issuu.com/neaipg/docs). Design and layout by Brandon Tufano, Kim Burger, and Dick Young. Section Members and Advertisers are alerted to each issue by e-mail. Many thanks are extended to all who helped in compiling this issue.

## **2021 NEAIPG EXECUTIVE COMMITTEE AND SUBCOMMITTEES**

### **PRESIDENT**

Jennifer Rhee, MEM-2805  
HDR Inc.  
1 International Blvd, Floor 10  
Mahwah, NJ 07495  
Work: (201)-335-9336  
Cell: (845)-664-5218  
jennifer.rhee@hdrinc.com

### **PRESIDENT ELECT**

Kelly A. Weyer, CPG-11826  
Clean Globe Environmental LLC  
PO BOX 1895, New City, NY 10956  
Office: 1-888-454-5923, Ext. 700  
kweyer@cg-env.com

### **PAST PRESIDENT**

Michael G. Grifasi, CPG-11489  
FPM Remediations, Inc.  
181 Kenwood Ave  
Oneida, NY 13421  
Office: (315) 336-7721 X215  
Fax: (917) 336-7722  
Cell: (917) 767-2662  
Email: m.grifasi@fpm-remediations.com

### **SECRETARY**

Adelina E Prentice, MEM-3075  
FPM Remediations Inc.  
181 Kenwood Ave  
Oneida, NY 13421  
Work: 315-336-7721 ext 228  
Fax: (315) 336-7722  
Email: a.prentice@fpm-remediations.com

### **TREASURER**

Robert P. Blauvelt, CPG-06508  
GEI Consultants  
300 Broadacres Dr, Suite 100  
Bloomfield, NJ 07003  
Office: (973) 873-7127  
Cell: (973) 803-0167  
Fax: (973) 509-9625  
rblauvelt@geiconsultants.com

### **MEMBERS**

Christopher Brown, CPG-10599  
PVE, LLC  
108 W 39th Street, Suite 501  
New York, NY 10018  
Office: (646) 602-4999  
Cell: (914) 475-2650  
E-mail: cbrown@pve-llc.com

Jessica McEachern, CPG-11869  
37 Spencer Street W  
Farmingdale, NY 11735  
Office: (516) 694-5212  
E-mail: geode78@verizon.net

### **Member at Large**

**Jeffrey J. Frederick, PG, CPG**  
Associate Vice President  
WSP USA  
500 Summit Lake Drive, Ste 450  
Valhalla, NY 10595  
Phone: +1 914 801 9206  
Mobile: +1 541 517 8774  
Email: [jeffrey.frederick@wsp.com](mailto:jeffrey.frederick@wsp.com)

Laurie Scheuing, CPG-09898  
46 Homestead Rd  
Saratoga Springs, NY 12866-5808  
Office: (518) 695-9445  
E-mail: lescheuing@aol.com

Luanne Whitbeck, CPG-07923  
P.O. Box 637  
Singerlands, NY 12159  
Office: (518) 475-1008  
E-mail: Luanne.whitbeck@gmail.com

Mitchell T Ward  
FPM Remediations Inc.  
181 Kenwood Ave  
Oneida, NY 13421  
Work: 315-336-7721 ext 230  
Email: [m.ward@fpm-remediations.com](mailto:m.ward@fpm-remediations.com)

### **SCREENING BOARD CHAIRMAN**

Charles A. Rich, CPG-04433  
CA Rich Consultants, Inc.  
17 Dupont Street  
Plainview, NY 11803-1602  
Office: (516) 576-8844 Fax: (516) 576-0093  
E-mail: crich@carichinc.com

### **NEWSLETTER EDITORS**

Brandon Tufano, MEM-2954  
Integral Consulting Inc.  
285 Century Place, Suite 190  
Louisville, CO 80027  
Cell: (570) 702-9992  
E-mail: btufano@integral-corp.com

Kim Burger  
Roux Environmental Engineering and Geology, D.P.C.  
209 Shafter Street  
Islandia, New York  
Cell: (631) 780-2956  
kburger@rouxinc.com

### **DIRECTORY OF MEMBERS EDITOR**

Curtis A. Kraemer, CPG-06019  
111 Van Cedarfield Road  
Colchester, CT 06415  
Office: 860-861-4644  
email: [curtkraemer@comcast.net](mailto:curtkraemer@comcast.net)

### **PUBLISHER & ADVERTISING MANAGER**

Richard H. Young, CPG-03356  
Consulting Geologists, LLC  
179 Intervale Road  
Parsippany, NJ 07054  
Office: 973-335-2289  
Fax: 973-335-9799  
E-mail: ryoungnj@aol.com

### **WEBMASTER**

Michael G. Grifasi, CPG-11489  
FPM Remediations, Inc.  
181 Kenwood Ave  
Oneida, NY 13421  
Office: (315) 336-7721 X215  
Fax: (917) 336-7722  
Cell: (917) 767-2662  
Email: m.grifasi@fpm-remediations.com

*(Executive Committee continued on page 7)*



# **Delta Well & Pump Co., Inc.**

**WATER AND ENVIRONMENTAL DRILLING**

97 Union Avenue PO Box 1309 Ronkonkoma, N.Y. 11779

**Phone: (631) 981-2255**

**Fax: (631) 981-2369**

Delta serves municipal and industrial customers

Providing a full range of drilling capabilities



(Executive Committee continued from page 5)

**2021 NORTHEAST SECTION SUBCOMMITTEES**  
(As updated 1/30/2020)

**Advertising Sales:** Dick Young

**Advisory Board Delegate:** Jeff Frederick

**Financial Planning and Treasury:** Bob Blauvelt, Dick Young

**Legislative Liaison and Registration:** Tom West (NY),  
Russell Slayback (CT), Sam Gowan (NY), Tim Stone (ME),  
Dorothy Richter (NH), Laurie Scheuing (NY)

**Membership:** Open

**Mentoring:** Dennis McGrath (Chairperson), Chris Brown

**Nominating:** Bob Blauvelt, Dennis McGrath

**Public Affairs:** Dennis McGrath (Chairperson)

**Scholarship:** Dennis McGrath (Co-Chairperson), Kelly Weyer  
(Co-Chairperson), Chris Brown, Jeffery Frederick, Sam Gowan, Michael  
Grifasi, Dean Herrick, Adelina Prentice, and Tom West

**Section Directory:** Curt Kraemer, Editor, Dick Young, Publisher

**Section Meetings:** Jessica McEachern, Bob Blauvelt, Chris Brown,  
Jennifer Rhee

**Section Newsletter:** Kim Burger and Brandon Tufano, Editors;  
Dick Young, Publisher

**Screening Board:** Charles Rich (Chairperson); Don Bruehl, Carol Graff,  
William Penn, Daniel Toder, Andrew Tolman, William Prehoda

**2021 EXECUTIVE COMMITTEE MEETING SCHEDULE:**

January 11<sup>th</sup>

March 8<sup>th</sup>

May 12<sup>th</sup> (Spring Meeting, TBA)

July 12<sup>th</sup>

September 13<sup>th</sup>

October 13<sup>th</sup> (Fall Meeting, TBA)

December 6<sup>th</sup>

**Meetings are  
typically held from  
4:00 to 6:00 pm via  
teleconference.**

## ***2021 INDEX OF ADVERTISERS***

### **ENVIRONMENTAL CONSULTANTS**

AECOM .....	<u>25</u>
Alpha Geoscience .....	<u>21</u>
Arcadis .....	<u>40</u>
Brinkerhoff Environmental Services, Inc .....	<u>33</u>
C.A. Rich Consultants, Inc .....	<u>45</u>
CHA .....	<u>33</u>
CSG Environmental Consultants .....	<u>21</u>
EAI, Inc .....	<u>18</u>
EWMA .....	<u>47</u>
FPM-Remediations .....	<u>41</u>
Gannett Fleming .....	<u>28</u>
GEI Consultants, Inc .....	<u>32</u>
GEOSPHERE Environmental Management, Inc. ....	<u>31</u>
Hager GeoScience, Inc .....	<u>36</u>
Hager-Richter Geoscience, Inc .....	<u>39</u>
Haley & Aldrich .....	<u>38</u>
Hatch Mott MacDonald .....	<u>46</u>
Lincoln Applied Geology, Inc .....	<u>24</u>
MC Environmental, LLC .....	<u>47</u>
McLane Environmental, LLC .....	<u>31</u>
PVE .....	<u>39</u>
Quantitative Hydrogeology, Inc .....	<u>33</u>
Regenesis .....	<u>25</u>
Richter Geology PLLC .....	<u>43</u>
RPI Group .....	<u>15</u>
Roux Associates, Inc .....	<u>11</u>
StoneHill Environmental, Inc .....	<u>38</u>
Tectonic Engineering .....	<u>36</u>
Terracon .....	<u>30</u>
TRC Environmental Corporation .....	<u>32</u>

### **DRILLING**

AARCO Environmental Services Corp .....	<u>56</u>
Allegheny Instruments, Inc .....	<u>50</u>
Boyd Artesian Well Co., Inc .....	<u>55</u>
Cascade Drilling .....	<u>Inside Front Cover</u>
Connecticut Test Borings, LLC .....	<u>50</u>
Directional Technologies, Inc .....	<u>63</u>
Drilex Environmental, Inc .....	<u>3</u>

*(Index of Advertisers continued on page 9)*

**2021 INDEX OF ADVERTISERS (Cont.)**

**DRILLING (Cont.)**

Eastern Analytical, Inc.....	49
General Borings, Inc.....	65
Geophysical Applications, Inc.....	53
Maine Test Borings.....	48
New England Boring Contractors of CT, Inc.....	57
Pennsylvania Drilling Company.....	62
Probe Support Services.....	10
SGS Environmental Services, Inc.....	53
Soil Mechanics Drilling Corporation.....	52
Soiltesting, Inc.....	55
Stephen B. Church, Co.....	62
Summit Drilling Co., Inc.....	51
Zebra Environmental.....	54

**ENVIRONMENTAL FIELD SERVICES**

Alpha Analytical.....	66
Atlantic Screen & Mfg., Inc.....	71
Badger Injection Solutions.....	74
Complete Environmental Testing, Inc.....	71
ConeTec, Inc.....	27
Delta Well & Pump Co., Inc.....	6
EnviRent Corporation.....	76
Enviroscan.....	69
Envirosite Corporation.....	75
GEOD Corporation.....	68
Island Pump and Tank.....	76
Layne Christensen Company.....	41
Samuel Stothoff Company, Inc.....	71
SJB Services, Inc.....	75
X-ray Utility Locating Service.....	70
York Analytical Laboratories, Inc.....	26

[www.geoproberental.com](http://www.geoproberental.com)

# Geoprobe® Rentals

[info@rentaprobe.com](mailto:info@rentaprobe.com)

Long Term  
Rental  
Discounts



**TRAINING Available**

7822DT TRACK • 7720DT TRACK  
6620DT TRACK • 54LT Track  
540MT & 420M Portable  
54TR Tractor • Grout Pumps  
Manual Slide Hammers • Trailers  
Tooling • Liners • Mob/Demob

*Providing various direct push  
Geoprobe® machines designed  
for unique environmental  
settings including wetlands,  
shoreslines, residential grounds,  
inside buildings and basements  
and more...*

**888•215•4666**

**PROBE**  
SUPPORT SERVICES  
[www.geoproberentals.com](http://www.geoproberentals.com)

[www.rentaprobe.com](http://www.rentaprobe.com)



## Presidential Ramblings SUMMER 2021

*By President Jennifer Rhee*

Greetings Northeast Section and happy summer! I hope everyone is enjoying this long awaited weather- as we put the past year in our rear view. In planning our family trip out west, I have been looking for more day trips in the northeast region. Focusing on the New York/New Jersey area, I find myself looking for more educational and, of course, geology-related trips for the family to experience. As some of you remember back in 2018, the Northeast Section visited the Sterling Hill Mine and Museum in Ogdensburg, New Jersey. I think this will be the next family trip in the coming weeks.

*(Ramblings continued on page 19)*



# ROUX

## Environmental Consulting & Management

- Brownfield Redevelopment
- Phase I & Phase II ESAs
- Constructed Treatment Wetlands
- Wetland Delineations and T&E Evaluation/Permitting
- Petroleum Remediation
- Stormwater/Wastewater Management
- Remediation Designs
- Litigation Support

*We Solve Our Clients' Most Challenging Environmental Problems*

**For more info: 1.800.322.7689 or [www.rouxinc.com](http://www.rouxinc.com)**

California • Illinois • Massachusetts • New Jersey • New York • Texas

# THE BADLANDS

By Mike Greenman, CPG-10441



My piece in this issue takes us a little closer to home. One of the places in this country that I have visited quite often is Rapid City, South Dakota. My son, a retired Lt. Colonel in the Air Force, and his wife have settled down in the hamlet of Box Elder, an eastern suburb of Rapid City near his former air base. His wife is still an active officer at the base. For geologists, this is an excellent location, since a half hour to the west are the Black Hills with Mount Rushmore and the old mining towns. Wind Cave and Jewel Cave National Parks are also in the Black Hills. A little further west is Devils Tower in Wyoming, and about an hour to the east are the Badlands.



*(The Badlands article continued on page 13)*

*(The Badlands article continued from page 12)*

Unlike many of our National Parks, which are mountainous and/or are in scenic areas, the Badlands sneak up on you. Only when you drive a little way into the park, and have your first view downward, do you see its magnificence. When you drive east out of Rapid City you cross the high grass of the northern plains. There is no indication of anything interesting to be viewed. The Badlands Loop road enters and exits from I-90. It is 40 miles long with numerous parking areas. Trails wander off from each of these parking spots so that you can immerse yourself in the scenery. Some of the trails wander across the rock formations, while others have stairs to get to the top of formations. For those not wishing anything too rugged, some of the trails have boardwalks that go out to the rim. I believe it is best to enter from the easterly entrance where the trails are more scenic. As usual, signage describes the geology, fauna, and flora of the area. NOTE: The term badlands with a lower case “b” refers to several places around the world with similar geology.



*(The Badlands article continued on page 14)*

*(The Badlands article continued from page 13)*



Two simple processes created the Badlands—deposition and erosion. The various layers consist of sandstones, siltstones, mudstones, claystones, limestones, volcanic ash, and shale. Deposition started 75 to 69 million years ago in an inland sea, forming the Pierre Shale. Fossils in the Pierre include ammonites as well as large marine reptiles. The Pierre is topped by a yellow paleosol known as Yellow Mounds, which derive their color from the mineral goethite. Above these are the Chadron formation, a light gray claystone formed on a hot, wet, vegetated flood plain 37 – 34 million years ago. Fossil giant alligator-like creatures are found in this formation. Above the Chadron is the Brule Formation, a sandstone formation laid down by rivers and streams on a savannah in much drier times, about 34 to 30 million years ago. Finally at the top is the Sharps Formation, also a sandstone formed by stream deposition. The basal unit of the Sharps is a layer of volcanic tuff derived from volcanic activity in the Great Basin area, which is now in Nevada and Utah.

Erosion is fast in the Badlands. The area is currently eroding at an inch a year. The Badlands will be gone in half a million years. Unlike the granites of the nearby Black Hills, which are eroding at an inch every 10,000 years, this is quite rapid in geologic time.

*(The Badlands article continued on page 16)*



# TRAP & TREAT®

BOS 100®

BOS 200®

CAT 100

THE ORIGINAL AND MOST WIDELY APPLIED  
**ACTIVATED CARBON  
BASED IN-SITU  
REMEDICATION  
CHEMISTRIES  
IN THE WORLD**

The RPI Group approach includes high density site characterization with pre-bid laboratory support, expert project design, and professional installation.

**19**  
**YEARS**

Celebrating our 19<sup>th</sup> year of unprecedented success returning environmentally compromised properties to their highest and best use.

Contact Derek Pizarro (610-517-8242, [dpizarro@astenv.com](mailto:dpizarro@astenv.com)) to learn if the RPI Group Approach to in-situ remediation is an option for your site.

*(The Badlands article continued from page 14)*



*(The Badlands article continued on page 17)*

*(The Badlands article continued from page 16)*



**TOP: The Outcrops**

**BOTTOM: One of the scenic trails near the eastern end of park.  
Most of the trails are simple marker posts crossings.**



*(End)*

# WHAT WE DO

CETCO Liquid Boot &  
GeoVent

Sub-Slab Depressurization  
Systems

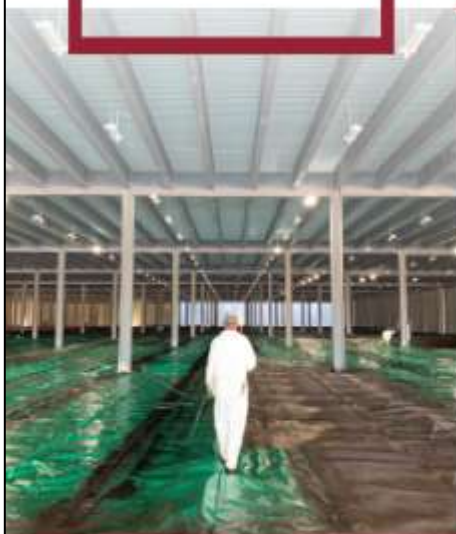
Gas Monitoring Systems

Design/Build Services

Waterproofing

Air Barriers

Specialty Contracting



**EAI INC EAI SOUTH**  
**ENVIRONMENTAL MANAGEMENT SERVICES**  
**SPECIALTY CONTRACTING**



EAI, Inc.  
50 Prescott Street  
Jersey City, NJ 07304



inforequest@eaienviron.com



(201) 395-0010 (Office)  
(201) 395-0020 (Fax)



EAI South, Inc.  
604 North 14th Street  
Fernandina Beach, FL 32034



inforequest@eaienviron.com



(904) 844-2148 (Office)  
(904) 432-7059 (Fax)

*(Ramblings continued from page 11)*

We were able to get an inside look into the world famous zinc mine known for its display of over 700 fluorescence mineral specimens. During the field trip, we traveled 1,300 feet into the mine and were able to witness the site's central focus—glowing zinc ores. My favorite was the Rainbow Tunnel that displays minerals that are red, green, yellow, and blue under the ultraviolet lights. Our group also got to tour a large slab that was being prepared for installation in the Museum of Natural History in New York City (see photo).

This was one of my favorite field trips I have participated in as part of the NE AIPG section. The large slab we observed at the mine is now on display in the fluorescence and phosphorescence gallery in the new Mignone Halls of Gems and Minerals at the Museum of National History. The Allison Mignone Hall of Gems and Minerals also boasts a 12-foot 9,000 pound amethyst geode and a gem gallery including the Star of India. Our hope is to coordinate a field trip to the Museum in Spring 2022 as in-person meetings become the norm (fingers crossed).

As always please reach out if you have any trips or geology related stories you would like to share with the Section, and they can be included in our next Newsletter.

Stay safe and healthy,  
Jennifer



*(End)*



I am truly honored to be one of ten recipients of the 2021-2022 "Angelo Tagliacozzo Memorial Geological Scholarship" from the American Institution for Professional Geologists. I'd like to extend my gratitude

for this generous contribution to my educational success.

I am able to participate in my university's geology field training camp this summer, which will further enrich my undergraduate geology education. I'm excited to be able to use the skills I have learned in a field setting and gain such valuable experience as a young professional geologist.

I've been interested in pursuing geology as a career for as long as I can remember, being awestruck by mountains and trying to understand the natural world. In light of the COVID-19 pandemic, financial hardships made it uncertain if I could participate in field training. Your scholarship offer will make it possible for me to join my classmates in a collaborative, hands-on learning environment. I intend to use the financial assistance from the Angelo Tagliacozzo Memorial Geological Scholarship to help pay tuition for the course and for field equipment that will continue to be useful in the future.

Thank you very much for awarding me with this incredible scholarship. It is the help of your generosity that's allowing me to participate in a fulfilling field course that will be invaluable in my geology career.

Sincerely,

Kathryn Lovell  
University of Buffalo

(End)



## Professional Geologic and Hydrogeologic Consulting

679 Plank Road, Clifton Park, NY 12065

Phone: (518) 348-6995

[www.alphageoscience.com](http://www.alphageoscience.com)

### Independent Laboratory Data Validation

#### Emergent Contaminants

- . PFOS, PFOA, and other PFAS
- . 1,4-dioxane

#### Quality Assurance/Quality Control

- . Validation of soil, water, and air data
- . Preparation of EDDs, SOPs, and QAPPs

Contact: Dinah Dixon  
[ddixon@alphageoscience.com](mailto:ddixon@alphageoscience.com)

### Mining Services

#### Hydrogeologic Investigation

- . Impacts to surface and ground water
- . Potential impacts from mine inflows
- . Mitigation of mine inflows

#### Mineral Resources

- . Resource and Reserve Analyses
- . Aggregates, Sand, and Gravel
- . Industrial Minerals, Metals and Salt
- . Permitting

Contact: Steven Trader, PG, CPG  
[strader@alphageoscience.com](mailto:strader@alphageoscience.com)



ENVIRONMENTAL CONSULTANTS

- ✓ property transfer site assessments
- ✓ groundwater development, management, protection, permitting
- ✓ UST closures and investigations
- ✓ litigation support

Carol S. Graff, CPG-06429  
109 Renfrew Avenue  
Trenton, NJ 08618-3335

Phone: 609-393-4442  
FAX: 609-393-5999  
E-mail: [cgraff5297@aol.com](mailto:cgraff5297@aol.com)



## **Angelo Tagliacozzo Memorial Geological Scholarship 35th Year Retrospective**

**By Dennis McGrath**

### **Part 3: A Profile of Angelo**

As described in the Winter 2021 Newsletter, this year marks the 35th anniversary of the Angelo Tagliacozzo Memorial Geological Scholarship Trust Fund. This article is the third of four planned articles (one article published in each of the 2021 Newsletters) to commemorate this milestone event. This article presents a new and updated profile of Angelo Tagliacozzo. The subject of the fourth and final article is under consideration.

At the risk of repeating ourselves again, we just want to say that for a few of you reading this article, the subject matter may be information you have read before or know firsthand. For mostly everyone else, however, we suspect you will be reading it for the first time. Regardless, we hope that everyone will find something of interest. We welcome comments and/or questions.

Angelo emigrated to the U.S. from Italy in the mid-1960s, with a Ph.D. in Geology from the University of Rome and about four years of experience under his belt working in Italy, Israel, and Iran as a geologist, geophysicist, or hydrogeologist. One of the highlights of Angelo's early career was the work he did in Iran following a devastating earthquake in the early 1960s. Angelo spent two years helping to rehabilitate Qanats (gravity-fed systems designed and constructed to transport drinking water from an aquifer or well to the surface through an underground aqueduct). Angelo also trained local geologists on how to dig new water wells while in Iran.

One might think with a doctorate and a few years of professional practice, adjusting to life in the U.S. would be an easy transition. According to Angelo's family though, that was not the case and Angelo had a rough start to his career after moving to the U.S. Angelo was very aware that he was considered a "foreigner." Angelo's first employment in the U.S. was with Lockwood, Kessler and Bartlett in Syosset, New York. About a year later, Angelo went to work with the United Nations and spent three years on an assignment in Costa Rica, where he served as

*(35th Anniversary continued on page 23)*

*(35th Anniversary continued from page 22)*

hydrogeologist and technical advisor developing agricultural and urban water supplies, in addition to training local geologists. Subsequently, Angelo returned to the New York area and over the next 17 years worked for several consulting firms (none of which still exist due to subsequent corporate mergers and acquisitions) including James P. Collins & Associates (a subsidiary of Edwards & Kelcey), Dames & Moore, Stone & Webster, and Gibbs & Hill. During this time, Angelo worked primarily as a hydrogeologist and project manager. At the time of his passing, Angelo served as the Chief of the Environmental Department at Gibbs & Hill.

As rough a start as he may have experienced, through Angelo's membership and active participation in professional organizations such as AIPG, the Geological Society of America, the Association of Engineering Geologists, and the Society of Exploration Geophysicists, he continued to find ways to help other geologists in their practice of the profession that he loved so much (specific examples are provided in the recounted stories below). Angelo also actively supported women practicing geology. Doing what he could to ease their path into the workplace was a prominent item on



Undetermined location in Italy  
(circa early 1960s).

*(35th Anniversary continued on page 24)*

*(35th Anniversary continued from page 23)*

his agenda. We trust that Angelo would be pleased today to know how many women and students of immigrant families have received the scholarship named to honor him.

In 1974, Angelo joined AIPG and received his CPG certification (CPG-02630). Angelo provided exemplary service to AIPG, at both the Section and National levels. He served a total of ten years on the Northeast (NE) Section Executive Committee (ExCom) including terms as Vice President (1977-1978) and President (1979-1980). Angelo also served on the NE Section Screening Board, and two years as an Advisory Board Representative on the National Executive Committee. Angelo's dedication to and leadership of the NE Section Screening Board became the ultimate standard against which service in such a position is measured.

To complete this profile, we compiled a list of current and former NE Section members who served on the ExCom or Screening Board with Angelo or those who may have known him to get their firsthand recollections. In addition to three members of Angelo's family (wife Rhoda, daughter Amy, and son Eric), we identified

*(35th Anniversary continued on page 27)*



- Brownfields Evaluation, Cleanup Negotiations and Remediation
- Single and Multiple Lot Septic System Design and Permitting
- ASTM Phase I and II Real Estate Assessments
- Water Supply Siting, Analysis, and Permitting
- Facility Operations Environmental Audits
- Federal, State, and Local Development Permitting
- Boundary Surveying, ALTA/ACSM Land Title Surveys, Construction Lay-

163 Revell Drive, Lincoln, VT 05443  
802-453-4384 \* 802-453-5399 (Fax) \* 800-477-4384  
Email: lagvt@lagvt.com

**AECOM**

**Imagine it.  
Delivered.**

As a fully integrated firm, AECOM connects knowledge and experience across our network of experts to help solve our client's most complex challenges. From high-performance buildings and transit systems, to resilient communities and environments, our work is transformative, differentiated and vital.

[aecom.com](http://aecom.com)

**Concerned about Site Remediation Budgets, Timelines and Technology Performance?**

**REGENESIS**  
[www.REGENESIS.com](http://www.REGENESIS.com)

**We can help.**

- Scalable site remediation solutions for almost any budget
- Proven remediation technologies on over 20,000 sites worldwide
- Expertise and experience to meet timeline expectations
- Combined remedy approaches to maximize performance and cost savings

**[www.regensis.com](http://www.regensis.com)  
(949) 366-8000**

 **REGENESIS**

# Angelo Tagliacozzo | 1936-1986



Seated in his Gibbs & Hill office, New York City (circa 1985).



# YORK

**ANALYTICAL LABORATORIES INC**



## New York City's Environmental Testing Lab

*Our People Are Your Greatest Resource.*

*For decades, we have dedicated ourselves to being the industry's client service leader, with an unrelenting commitment to performance, reliability and service.*

**[www.yorklab.com](http://www.yorklab.com)   [clientservices@yorklab.com](mailto:clientservices@yorklab.com)   203.325.1371**

**EXECUTIVE OFFICE**  
50 Godney Drive  
Nyack, NY 10960

**CONNECTICUT LAB**  
120 Research Drive  
Stratford, CT 06615

**NYC LAB**  
132-02 89th Avenue  
Richmond Hills, NY 11418

**NJ CLIENT SERVICE CENTER**  
94 Planten Avenue  
Prospect Park, NJ 07508

# SAFETY. QUALITY. PEOPLE. EQUIPMENT.

GLOBAL LEADERS IN SITE CHARACTERIZATION



Seismic Cone Penetration Testing (SCPTu)



Geophysical Testing



Over Water



In-Situ Testing (eVST, PMT, DMT)



Monitoring and Instrumentation



Drilling and Sampling

BETTER INFORMATION    CONETEC.COM  
BETTER DECISIONS

CONETEC

*(35th Anniversary continued from page 24)*

eighteen current or former NE Section AIPG members. We then attempted to contact (via email, phone, or text) every individual on the list, as well as anyone else in the NE Section who may have known Angelo and was not included on the list of eighteen. We were successful in reaching ten; eight of whom provided memories of their interactions with Angelo. The rest of this article recounts the memories shared from those eight individuals. They vary widely in subject matter and length, but each one attests to Angelo's character, his sense of humor, his willingness to help others, his perseverance, or his unflagging enthusiasm in promoting the profession he came to love.

David Miller (CPG-01757) (the 'Miller' in the renowned former groundwater consulting firm Geraghty & Miller) wrote that he has very fond memories of the time he spent with Angelo. He remembers that Angelo had a great sense of humor, was a diligent worker, and was always ready and available for support.

*(35th Anniversary continued on page 29)*

# DEFINING INNOVATION WITH SUSTAINABLE SOLUTIONS



Site Investigation and Remediation  
Geotechnical/Earth Sciences  
Sustainability  
Brownfields Characterization and Redevelopment  
Dams and Hydraulics  
Environmental Infrastructure  
Architecture  
Civil  
Transportation  
Water/Wastewater  
Structural  
GIS/Information Technology  
Construction Management/Design-Build



[www.gannettfleming.com](http://www.gannettfleming.com)

James M. Barish, CPG, LSRP ■ Phone: (609) 584-9599 ■ Cell: (609) 385-5822  
[jbarish@gfnet.com](mailto:jbarish@gfnet.com) ■ More than 55 offices worldwide  
Suite 203, 3575 Quakerbridge Road, Hamilton, NJ 08619

ISO 9001:2015  
CERTIFIED



## WE WANT YOU TO SHARE YOUR NEWS!

With over 800 hundred geologists in the NE Section of AIPG, we want to know what has been happening in YOUR workplace and life during the months of the pandemic.

Help us by sending a short blurb to publisher Dick Young at [ryoungnj@aol.com](mailto:ryoungnj@aol.com) or editor Kim Burger at [kburger@rouxinc.com](mailto:kburger@rouxinc.com). Your story will be part of the next newsletter.

Need an idea? Check out the News for Members section on page 56.

## We cannot wait to hear about your news!

*(35th Anniversary continued from page 27)*

David was also a sponsor for Angelo's AIPG application.

Charles Dimmick (CPG-03886) and Angelo were trading stories one day about the Micropaleontology courses they had taken as graduate students. One favorite story was that during lab exercises, students would typically be given a tray of washed microfossils and the lab task would be to classify all the fossils. Occasionally, there were samples that could not be readily classified, so the students would sometimes flick the offending specimen from the tray onto the floor. The professor somehow became aware of the practice because one day the students were instructed instead to sweep the laboratory floor and classify what they found.

George Banino (CPG-02257) recounted that he and Angelo were close friends and that George visited Angelo at home several times where he met his wife, Rhoda. In honor of that friendship, George was one of the original contributors to the scholarship fund.

Steve Maslansky (CPG-04431) remembers attending his first NE Section meeting in early 1979 as newly-minted CPG. Steve had only taken a few steps into the meeting room when Angelo approached him. In addition to the warm greeting Steve received from Angelo, it did not take Steve long to realize that Angelo had a profound love for his profession and all things 'geologic.' At future meetings, Steve came to realize that Angelo also had an incredible knack in convincing people to volunteer to help the NE Section; Steve always found it tough to say No.

Mike McEachern (CPG-03835) recalled receiving messages from someone named 'Angelo' while he was overseeing deep well drilling and running geophysical logs at a nuclear power plant site in Salem, New Jersey. Already a bit nervous working at a site that was tightly controlled by union bosses, Mike feared the worst and was unsure why this 'Angelo' character wanted to speak to him. Mike's fears were quickly laid to rest upon meeting Angelo – an affable and very experienced geologist who loved to talk shop. Several years later, the two met again. Angelo brought up the subject of AIPG and encouraged Mike to apply. Mike applied and received his CPG certification shortly before Angelo became NE

*(35th Anniversary continued on page 58)*



# Reliable.

Convenient Responsive Innovative

Your business objectives are our top priority. We deliver information on time so you avoid delays, surprises and costly mistakes down the road. For projects large and small, single- or multi-site, you can rely on consistent results nationwide.



Manchester, NH [603] 647 9700  
Offices Nationwide [terracon.com](http://terracon.com)

**Terracon**

Geotechnical ■ Environmental ■ Construction Materials ■ Facilities

# GEOSPHERE

ENVIRONMENTAL MANAGEMENT INC.

NEW HAMPSHIRE

MASSACHUSETTS

(603)-773-0075

(888)-838-6571

WWW.GEOSPHERENH.COM

GROUNDWATER SUPPLY

SITE ASSESSMENTS

LSP SERVICES

GEOTHERMAL

WETLANDS

PROFESSIONAL CONSULTANTS PROVIDING  
GROUNDWATER & ENVIRONMENTAL SOLUTIONS

## McLANE ENVIRONMENTAL, LLC

### Range of Services

Ground Water Modeling

Contaminant Fate  
and Transport

Aquifer Characterization

Remediation Design  
and Optimization

Exposure and  
Risk Assessment

Water Resources  
and Supply

Natural Resource  
Damages

Coastal Zone  
Modeling

Wastewater  
Disposal Analyses

GIS and  
Data Visualization

Litigation Support



Providing ground water consulting services to clients nationwide, including:

- industrial corporations,
- law firms,
- municipalities,
- DOD, DOE, and others.

Specializing in ground water modeling, chemical fate and transport, well field optimization, and litigation support services.

Visit our web site at  
[www.McLaneEnv.com](http://www.McLaneEnv.com)

E-mail: [info@McLaneEnv.com](mailto:info@McLaneEnv.com)

707 Alexander Road, Suite 206  
Princeton, NJ 08540

Ph. 609.987.1400 Fax 609.987.8488

# 50 Years of Environmental Solutions in New Jersey

- Ground Water Investigation and Remediation
- Soil Investigation and Remediation
- Ground Water Supply Development
- Underground Storage Tank Investigation
- ISRA Compliance
- Environmental Site Inspections and Audits
- Brownfields Investigation and Permits
- Litigation Support and Expert Testimony
- LSRP Services



41 Spring Street, Suite 102  
New Providence, NJ 07974  
T: 908.988.1700 F: 908.464.3712  
[www.trcsolutions.com](http://www.trcsolutions.com)

GEI provides geotechnical, environmental, water resources and ecological consulting and engineering services. We provide these services from planning and design through construction and operations. Our clients include government agencies, institutions, industries, developers, utilities and professional service firms.



For more information  
contact Bob Blauvelt at  
973.873.7127  
[www.geiconsultants.com](http://www.geiconsultants.com)

GEI Consultants, Inc.  
300 Broadacres Drive, Suite 100  
Bloomfield, NJ 07003





**QUANTITATIVE  
HYDROGEOLOGY  
INC.**

- Aquifer Characterization & Conceptualization • Modeling •
- Aquifer Tests → Design, Implementation, & Analyses •
- Flow & Transport Analyses/Evaluations • Environmental Litigation •

**Michael A. De Cillis, CPG-6986,**

*providing Hydrogeologic & Environmental-Consulting Services, and  
Technical & Logistical Support within the Ground-Water Profession since 1976.*

42 Marc Ct, Bay Shore, NY 11706-7351 – (631) 859-3507 – E-mail: [madedcillis@optonline.net](mailto:madedcillis@optonline.net)

# BRINKERHOFF



**ENVIRONMENTAL SERVICES, INC.**

Geologists • Hydrogeologists • Environmental Scientists

**Environmental Consulting • Environmental Permitting  
Site Investigation • Soil and Groundwater Remediation**

1805 Atlantic Ave. • Manasquan, NJ 08736

Tel: 732-223-2225 • Fax: 732-223-3666 • [www.brinkenv.com](http://www.brinkenv.com)



*Providing Full Service Engineering, Planning and  
Construction Expertise to Our Clients for Over 80 Years*

*Imagine*  
What We Can Do for You!

**CHA**  
[www.chacompanies.com](http://www.chacompanies.com)  
800.836.0817

# **The Carboniferous Has Gone Missing... and so Has the Permian!**

**By Rich Volkert and Ron Witte**

There are no rocks of Carboniferous (aka Mississippian & Pennsylvanian) or Permian age in New Jersey. Where did 100 million years of lithologic activity disappear to? The answer highlights the complex geologic history of the state and illustrates the excellent work of the New Jersey Geological Survey in producing one of the most detailed bedrock maps in the county. But first, a quick primer on Garden State geology.

New Jersey can be divided into four physiographic provinces or regions: the Highlands, the Valley and Ridge, the Piedmont, and the Coastal Plain. The Highlands, west of the Valley and Ridge and east of the Piedmont, is characterized by metamorphic rocks of Precambrian age. These gneisses, schists, and granites are resistant to erosion and form a distinctive topography made up of hilly uplands with deep, step-sided stream carved valleys. The Highlands contain the oldest and the most interesting rocks in the state.

The Valley and Ridge is in the northwestern corner of New Jersey and is made up of long, parallel ridges and valleys (duh!). These were formed by folded and faulted limestone and shale (the valleys) and sandstones (the ridges). The age of the rocks in this physiographic province ranges from Ordovician to Devonian. The Piedmont snuggles up against the Highlands and is separated from it by the Ramapo Fault system, a series of northeast-striking, southeast-dipping normal faults. Piedmont rocks are Late Triassic and Early Jurassic and formed gently rolling plains. They were fashioned as sediment eroded from the adjacent Highlands and were subsequently washed into river basins and lakes. This loose geologic debris eventually was compacted and cemented to form conglomerate, sandstone, siltstone, and shale. The Coastal Plain overlaps the Piedmont and is distinctively flat, formed by sands, clays, and marls that have washed out of the nearby Piedmont. The rocks of this province are Cretaceous and early Cenozoic (Paleogene and Neogene) in age.

Fossils can be found in many types of rocks from most of these regions, which collectively represent tens of millions of years. So, what happened to the Carboniferous and Permian? The explanation begins back in the Precambrian.

About one billion years ago, in a geologic event known as the Grenville Orogeny, the eastern edge of the mega-continent of Laurentia (roughly

*(Carboniferous continued on page 35)*

*Carboniferous continued from page 34)*

today's North America landmass) collided with the continent of Amazonia (roughly current day South America). This slow motion continental fender bender forced the Amazonian crust over the Laurentian and pushed up what is today the Appalachian Mountains to elevations about equivalent to those of the present day Rocky Mountains. It also buried the sediments and rocks that had been quietly accumulating and forming in what is now the Highlands to more than 15 km below ground where they were baked, heated, deformed, and generally treated very badly. This resulted in the formation of the gneisses and schists that are visible at the surface today. As the overlying rocks were eroded and used to supply the sediment which now forms the sandstones, shales, and limestones in the Valley and Ridge Province, the once deeply buried, now metamorphosed rocks rose up in triumph to form the New Jersey Highlands (cue the balloons).

*(Carboniferous continued on pg. 37)*

# AIPG

## American Institute of Professional Geologists

1333 W. 120th Avenue, Suite 211

Westminster, CO 80234-2710

Ph: (303) 412-6205 • Fax: (303) 253-9220

E-mail: aipg@aipg.org • Website: www.aipg.org

## Geologic Time Scale

Boundaries ~ Million Years Ago

ERA	Period	Major Geologic Events	Millions of Years Ago
Cenozoic	Quaternary	Modern humans	2.6
	Tertiary	Abundant mammals	
Mesozoic	Cretaceous	Flowering plants; dinosaur and ammonoid extinctions	66
	Jurassic	First birds and mammals; abundant dinosaurs	145
	Triassic	Abundant coniferous trees	~201
Paleozoic	Permian	Extinction of trilobites and other marine animals	252
	Pennsylvanian	Fern forests; abundant insects; first reptiles	299
	Mississippian	Sharks; large primitive trees	323
	Devonian	Amphibians and ammonoids	359
	Silurian	Early plants and animals on land	419
	Ordovician	Abundant fish	444
	Cambrian	First Fish; trilobites dominant	485
Precambrian	Proterozoic	Primitive aquatic plants	541
	Archean	Oldest fossils; bacteria and algae	2500
			4000+

# Tectonic

TECHNICAL SOLUTIONS. ENVIRONMENTAL SERVICES.



[www.tectonicengineering.com](http://www.tectonicengineering.com)

800.829.6531

NY. NJ. CT. PA.

- NJ Licensed Site Remediation Professional (LSRP) Services
- Phase I/Phase II Environmental Site Assessments
- Industrial Site Recovery Act Services
- Tank Closures & Spill Investigations
- Vapor Intrusion Studies & Mitigation
- Remedial Design of Contaminated Soil/ Groundwater
- Terrestrial Ecological Evaluations
- Mold, Asbestos & Lead Management
- Subsurface Investigations & Geotechnical Engineering
- Geotechnical Instrumentation & Monitoring
- Vibration & Noise Monitoring
- Retaining Wall & Excavation Support Systems Design



# HGi

HAGER GEOSCIENCE, INC.

## Innovative solutions to Subsurface Problems

Celebrating 27 Years of  
Geophysical Consulting  
Services for Engineering,  
Environmental, and  
Infrastructure Projects

PH +1-781-935-8111

[hgi@hagergeoscience.com](mailto:hgi@hagergeoscience.com)

Jutta Hager, Ph.D., P.G., President  
[jhager@hagergeoscience.com](mailto:jhager@hagergeoscience.com)

*(Carboniferous continued from page 35)*

All is geologically harmonious, more or less, for the next 240 million years or so as during the Early Carboniferous (Mississippian), limestones, shales, sandstones, and evaporites were deposited in the shallow sea that covered most of North America. The rocks along the east coast, including New Jersey, were being deposited in this manner until the Late Carboniferous (Pennsylvanian) through the beginning of the Permian when North America started to collide with Gondwana, an ancient supercontinent that includes today's Africa, Arabia, Australia, Antarctica, Madagascar, India, and South America. This collision would form the largest known Paleozoic landmass (Pangea), as well as uplift the ancestral Rocky Mountains, the Ouachita Mountains, and much of eastern Canada.

It also elevated the area that would eventually become known as the Valley and Ridge Province of New Jersey. As a result, all the hard-earned sedimentary rocks, their associated fossils, and related landforms that had accumulated up through the Permian began to erode, and with them went almost 300 million years of geologic history. Not to fear though, many of these rocks have been preserved in eastern Pennsylvania, to the west, just across the Delaware River. Although, I like to think that along some seldom visited ridgeline or concealed in a deep, dark, New Jersey valley, a piece of the Carboniferous or Permian remains to be discovered.

Further Reading:

GEOLOGIC HISTORY AND VIRTUAL FIELD TRIP OF THE NEW JERSEY HIGHLANDS

<https://www.njgeology.org/enviroed/freedwn/HighlandsVFT.pdf>



*(End)*



**Building communities.  
Improving our infrastructure.**

*Creating new possibilities with clients.*

- Property development and brownfields reuse
- Remedial investigations, design and construction
- Environmental, health and safety management
- Energy facility and linear utilities development
- Underground construction risk management
- Sustainable design enhancement

25 Offices Nationwide • T. 617.886.7400 • [HaleyAldrich.com](http://HaleyAldrich.com)

## **StoneHill Environmental, Inc.**

**Providing Environmental Consulting Services  
Throughout New England Since 1989**

- ▶ **Phase I & II Due Diligence Assessments**
- ▶ **Water Resource Impact Studies & Development**
- ▶ **Rock Blasting Groundwater Impact Studies**
- ▶ **Expert Witness and Litigation Support**
- ▶ **Contaminated Site Investigation and Remediation**

***Contact: Timothy Stone CPG***

***Licensed Geologist NH, ME, DE, PA / Massachusetts LSP***

600 State Street, Suite 2, Portsmouth, New Hampshire 03801  
(603) 433-1935 □ (800) 639-4503 □ FAX: (603) 433-1942

NH-WBE/MBE, MA-SOMWBA, WBE Teaming



*"Realize Your Vision"*



- Assessment & Remediation Services
- Vapor Intrusion Evaluations
- Brine Disposal Wells
- Reservoir Evaluation and Gas Storage Facilities
- GIS Services

Contact us today to learn how we can help with your next project!

Environmental • Civil Engineering • Structure Design  
Landscape Architecture • Land Planning • Municipal • Energy • Survey

(845) 454-2544 | [www.PVE-llc.com](http://www.PVE-llc.com) | [info@PVE-llc.com](mailto:info@PVE-llc.com)

# HAGER-RICHTER

*Geophysics for the Engineering Community*

*National Reputation | Nationwide Practice  
Take a Closer Look. You'll Like What You See.*

[www.hager-richter.com](http://www.hager-richter.com)

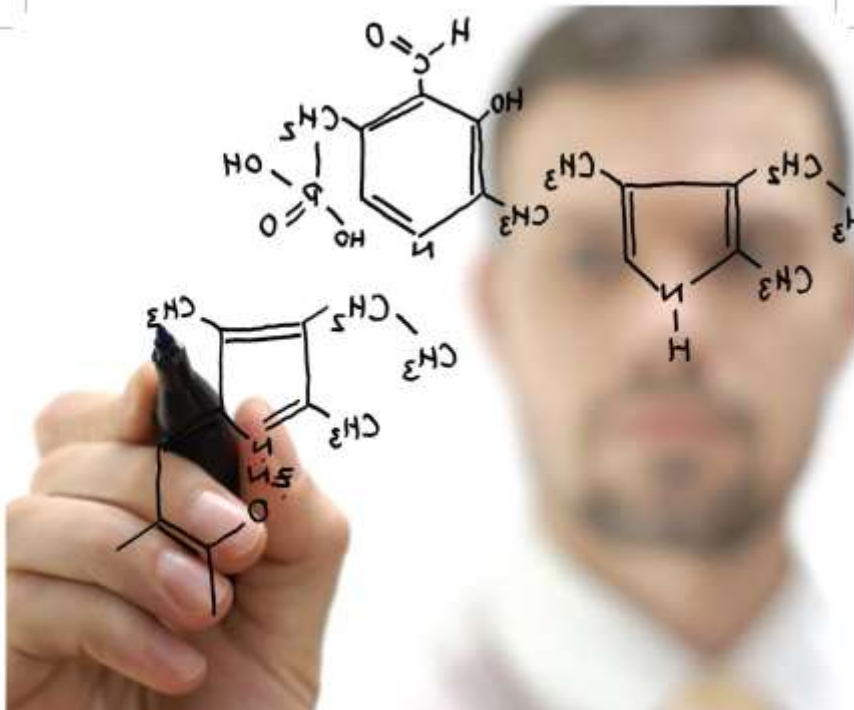
**Main Office**

8 Industrial Way—D10  
Salem, New Hampshire 03079  
T: 603-893-9944

**NY / NJ Office**

846 Main Street  
Fords, New Jersey 08863  
T: 732-661-0555

*dba HR Geological Services in New York*



## Solutions to complex challenges

A continually shifting world makes any engineering design solution difficult, often overwhelming. We help you overcome these challenges.

First, we start with you – defining true value and a successful outcome. With a deep understanding of the nexus between regulatory, technological and environmental drivers, we deliver certainty on cost-effective projects and programs that meet and exceed your goals.

**Together we can do a world of good.**

[www.arcadis-us.com](http://www.arcadis-us.com)

Two Huntington  
Quadrangle Suite 1510  
Melville, NY 11747  
631 249 7600

Imagine the result

 **ARCADIS**  
Infrastructure | Water | Environment | Buildings

# FPM Remediations, Inc.

An **Olgonik** Company



- ◆ Self-Perform Investigation/Remediation Activities at Sites Impacted by Environmental Contaminants and Munitions



- ◆ Specialize in Performance-Based Contracting
- ◆ Certified/Licensed Engineers, Geologists, Scientists, Geophysicists, and Unexploded Ordnance Experts



- ◆ 20+ Years of DoD Experience
- ◆ DoD Advanced Geophysical Classification Accreditation Program (DAGCAP) Certified



FIND OUT MORE AT: [WWW.FPM-REMEDIATIONS.COM](http://WWW.FPM-REMEDIATIONS.COM)

## Layne



**Resource Development and Maintenance**

Layne Christensen's well-trained field crews and experienced staff work with clients to:

- Develop new water sources
- Rehabilitate existing wells, through either chemical or mechanical processes
- Provide pump service (new sales, repairs and installation)



**Water Treatment**

Layne Christensen's professional engineers can assist in determining an appropriate treatment technology. We then fabricate systems scaled to each client's requirements.

**Experienced • Equipped • Committed**

*... Since 1882*

New England • (978) 937-2242  
New York • (518) 295-8288  
Long Island • (631) 218-0749

# MARCH 2021 MEETING MINUTES

## NE SECTION – AIPG EXECUTIVE COMMITTEE MEETING MONDAY, MARCH 8, 2021

Distribution:

Jennifer Rhee	Michael Grifasi	Bob Blauvelt	Mitch Ward
Jeff Frederick	Kelly Weyer	Luanne Whitbeck	Adelina Prentice
Laurie Scheuing	Chris Brown	Dennis McGrath	Dick Young

### Call to Order (4:02 PM)

#### Secretary's Report (Minutes)

- ♦ January 2021 – Motion to accept as drafted is offered and seconded, voted yes.

#### Treasurer's Report

- ♦ January 2021 – The section fund is in good standing, and showing the typical fees associated with the account.
- ♦ The Angelo Tagliacozzo Memorial Geological Scholarship (ATMGS) fund is doing well after some fluctuations over the last few months, and the balance is similar to last month's.

#### Correspondence

- ♦ Scholarship-related – the committee met for the scholarships, and Kelly will take the lead on presenting the info for the scholarships.

#### Old Business

- ♦ Short Course Update – Drone Short Course – Virtual Version – The course is on the LSRP board for approval to convert the drone course from 4 hours in-person to 2 hours online. The instructor is confirmed, and a revised syllabus has been sent into various boards around first of the year.
- ♦ 2020 to 2021 Scholarship – Some of the survey information has been updated. No feedback has been received from faculty so far.
- ♦ Fundraiser Group – A call for ideas was made so there is something to present at the next meeting. A discussion on goals followed and the group decided to schedule a call to discuss fund raising.
- ♦ Website ExCom Information – A ticket has been put in for star chapter, and a discussion followed on troubleshooting access to contact information.

*(Minutes continued on page 43)*

*(Minutes continued from page 42)*

## **New Business**

- ♦ 2021 Scholarship Discussions – This year there were 15 applicants from 10 universities, and 9 reviewers on committee. The initial proposal is 10 scholarships totaling 30k. A discussion followed on how the scoring system works for applicants. A discussion followed on how much to award, how to split the funds between the section and the fund, and whether to award every applicant some award due to the nature of 2020.
- ♦ Break from ExCom 5:31 pm for ATMGS board of trustees meeting. Called back to order at 5:38 pm.
- ♦ A motion was made to take 10k from the section fund to award 10 scholarships and was passed. Additionally the ATMGS board voted to contribute 20k to the scholarships.
- ♦ Spring Meeting Discussion- Virtual

## **Publications**

- ♦ Newsletter – Newsletter – Brandon Tufano will be resuming his role as editor temporarily as Kim will be unavailable for some time due to health reasons.
- ♦ Advertising Sales Update & Income – A discussion about the funds coming in, and a call for advertisers.

**A motion was made to adjourn and the motion was seconded and passed. Adjournment (5:51 PM)**

*(Minutes continued on page 44)*

# **RICHTER GEOLOGY PLLC**

**Dorothy Richter, P.G.**

(NH, NY, PA, NC, KY, IL, MN)

President

603 231-7845

dorothy.richter@outlook.com

**richtergeology.com**

*(Minutes continued from page 43)*

**MAY 2021 MEETING MINUTES**  
**NE SECTION – AIPG**  
**EXECUTIVE COMMITTEE MEETING**  
**MONDAY, MAY 17, 2021**

Distribution:

Jennifer Rhee	Michael Grifasi	Bob Blauvelt	Mitch Ward
Jeff Frederick	Kelly Weyer	Luanne Whitbeck	Adelina Prentice
Laurie Scheuing	Chris Brown	Dennis McGrath	Dick Young

**Call to Order (4:02 PM)**

**Secretary's Report (Minutes)**

- ♦ March 2021– Motion to accept as drafted is offered and seconded, voted yes .

**Treasurer's Report**

- ♦ March – April 2021 - The section fund is in good standing, and showing the typical fees associated with the account..
- ♦ The Angelo Tagliacozzo Memorial Geological Scholarship (ATMGS) fund is doing well after some fluctuations over the last few months. The balance is down only slightly from prior month despite cashed scholarship checks. Market is better than average but balancing out with changes.

**Correspondence**

- ♦ Scholarship – We did get some correspondences from recipients of the scholarships and it has been pretty great!
- ♦ Spring Meeting – Some positive feedback was received.

**Old Business**

- ♦ Short Course Update – Drone Short Course – Virtual Version – proposal for a 2 hour online course is being submitted. A short discussion followed on cost of registration and whether to look for sponsors. We will likely not seek sponsorship, and 8-10 registrants should make the course worthwhile.
- ♦ Fundraiser Group – Some ideas have been discussed, no final decisions as focus has been on spring meeting.
- ♦ Website ExCom Information – Contact Jennifer if updates are needed.

*(Minutes continued on page 48)*

## Support Our Advertisers and Sponsors!

The Executive Committee reminds all our members to support the companies that advertise in this Newsletter and generously sponsor our meetings. Their support represents a major contribution that helps the Northeast Section continue its mission to promote the profession and build the cornerstone of our Section, the *Angelo Tagliacozzo Memorial Geological Scholarship Perpetual Trust Fund*. It is our advertisers and sponsors who make our Newsletter so successful and well-distributed, reaching more than 600 members across eight states.

Please let our advertisers and sponsors know you appreciate them by working with these companies whenever possible. Be sure to personally acknowledge their support when you speak with their representatives, and mention you saw their ad or sponsorship in our Newsletter.

*Thank you to all our advertisers and sponsors!*



***Your Full-Service Environmental Expert Since 1982***

- Due Diligence
- Geology Services
- Emerging Contaminants
- Groundwater Resources
- Air Quality / Soil Vapor
- Construction Oversight
- Brownfield Redevelopment
- Remediation
- Peer Review
- Regulatory Liaison
- Litigation Support
- Valuations / Tax Cert.
- Expedited Deal Flow
- Strategic Thinking

17 Dupont Street, Plainview, NY 11803 ■ Tel. 516.576.8844  
Fax. 516.576.0093 ■ [www.carichinc.com](http://www.carichinc.com)



- > environmental engineering
- > site assessments & remediation
- > environmental investigations
- > environmental services related to real estate transactions
- > storage tank management
- > hydrogeology/groundwater modeling
- > cost recovery litigation support
- > expert testimony
- > brownfields



**Hatch Mott  
MacDonald**

**Delivering Solutions**

*headquarters: Iselin, NJ  
offices across North America*

**800.832.3272**

**[www.hatchmott.com](http://www.hatchmott.com)**



[www.mc-environmental.net](http://www.mc-environmental.net)

# **MC ENVIRONMENTAL, LLC**

**Environmental Services & Consulting**

*Hydrogeology Water Resources Compliance*

*26 Railroad Avenue, No.182 Babylon, NY 11702-2204*

631 321 4500

Fax 631 321 0190



An Environmental Consulting  
& Remediation Firm

## **Timely Response. Time-Proven Solutions.**

- Guaranteed Fixed-Price Remediation
- Environmental Due Diligence
- Regulatory Compliance
- Litigation Experts and Environmental Forensics
- Indoor Air Quality

Call the experts at EWMA to assist with  
your environmental questions.

(800) 969-3159

[www.ewma.com](http://www.ewma.com)

Parsippany, NJ  
Hamilton, NJ  
New York, NY



*(Minutes continued from page 44)*

## **New Business**

- ◆ Spring Meeting Discussion- Virtual – Went well with about 18 participants, including some students presenting. Some feedback during the meeting included a need to prepare some questions for discussion with the speaker. This will set a good example for students and create a better meeting dynamic.
- ◆ 2022 Scholarship Committee – Dennis will be stepping away starting this coming year with Kelly taking the lead. We will want to have the committee members finalized by mid to end of July.
- ◆ Fall Meeting- Virtual? – Given the number of meetings between now and fall meeting we should decide by July if the meeting will be virtual. We should also be prepared to discuss details and form a planning committee.
- ◆ A short discussion after agenda business on whether we should rename Indian Summer issue to Autumn Issue or similar.

## **Publications**

- ◆ Newsletter – Brandon stepped in for Kim with the last newsletter and it came out great! Kim is getting better and planning on coming back for the Summer newsletter.
- ◆ Advertising Sales Update & Income – Some folks are still catching up on payments and we should have a total soon. As always, if you know of any firms that aren't advertising with us but should be let us know so we can reach out to them.
- ◆ Working on a profile of Angelo Tagliacozzo with the anniversary of the scholarship fund this year.

**A motion was made to adjourn, which is seconded and passed.  
Adjournment (5:21 PM)**

*(End)*



## **Maine Test Borings**

18 Mack Lane  
Hermon, ME 04401

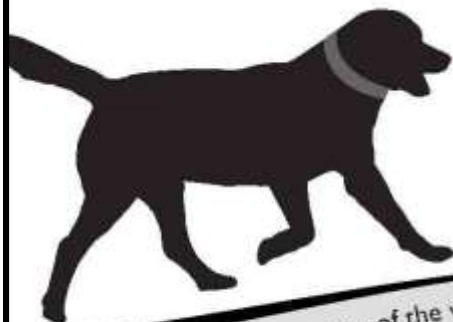
**Jon Rudnicki**

Ph: (207) 848-7041  
Ph: (800) 698-9142  
Cell: (207) 659-1749

Fx: (207) 848-7042  
www.mainetest.com  
jon@mainetest.com



**Eastern Analytical, Inc.**  
professional laboratory & drilling services



GROUNDWATER  
SOIL & SLUDGE  
WASTEWATER  
STORMWATER  
DRINKING WATER  
SURFACE WATER

we're with you every step of the way | [www.eailabs.com](http://www.eailabs.com) | 800.287.0525

## **SOME AIPG THINGS YOU CAN DO**

What's going on out there? Let your colleagues know what you are working on, your new position, or a new company.

*Simply e-mail a paragraph or more to:*  
*[kburger@rouxinc.com](mailto:kburger@rouxinc.com) OR [btufano@integral-corp.co](mailto:btufano@integral-corp.co)*

Become active in your section.  
Attend one of our meetings.

*For details, simply e-mail [geode78@verizon.net](mailto:geode78@verizon.net)*

Join our Executive Committee. We always have openings for creative, committed Geologists wanting to make a difference, and not much is asked of your time. Think about putting it on your resume!

*For more info, simply e-mail [geode78@verizon.net](mailto:geode78@verizon.net)  
OR [jfrederick@louisberger.com](mailto:jfrederick@louisberger.com)*



## GeoVISION™ BOREHOLE VIDEO CAMERA SYSTEMS

**Hand Reel to 1000 Feet, Electric Winch to 2000 Feet  
Joystick-Controlled Pan Tilt or Dual View Cameras**



**Bore Diameters From 1-Inch To Mine Shafts**

[sales@alleghenyinstruments.com](mailto:sales@alleghenyinstruments.com)  
[www.alleghenyinstruments.com](http://www.alleghenyinstruments.com)

800-255-1353  
802-626-5302



**Serving Southern New England and Eastern New York**

## **Connecticut Test Borings, LLC**

*Geotechnical and Environmental Drilling*

- ◆ **Hollow Stem Auger Drilling**
- ◆ **Soil Sampling - Rock Coring**
- ◆ **Monitor Well Installations**
- ◆ **Direct Push (Geoprobe®) Sampling**



[www.connecticuttestborings.com](http://www.connecticuttestborings.com) • 203-888-3857 • fax 203-888-0655 • [ctbllic@sbcglobal.net](mailto:ctbllic@sbcglobal.net)



## ***Experience Sonic***

Benefit from continuous core sampling in overburden, sand, gravel, clay, cobbles, boulders, weathered bedrock, and delicate formations. With drill speeds up to 4 times faster and as much as 80% less waste, there is no better technology or value than Sonic.

***Summit Drilling's Sonic Division*** has invested in the industry's best people. Our new sonic fleet is operated by highly skilled and specially trained drillers who deliver unmatched sample quality and efficiency in the field. *As important*, sonic is the safest drilling technology.

Summit Drilling is recognized by state agencies, customers and peers for their ongoing commitment to safety and consecutive record of success.

***Experience Sonic at An Exceptional Level. Call Summit Drilling and Speak with a Sonic Expert Today.***

***Ask about our Site Characterization and Remediation capabilities too!***

[www.summitdrilling.com](http://www.summitdrilling.com)



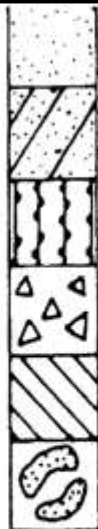
Drilling - Direct Push - Injection  
An Exceptional Experience™

800-242-6648

CARL VERNICK, P.E.  
President

## SOIL MECHANICS DRILLING CORP.

3770 MERRICK ROAD • SEAFORD, L.I., NEW YORK 11783  
(516) 221-2333



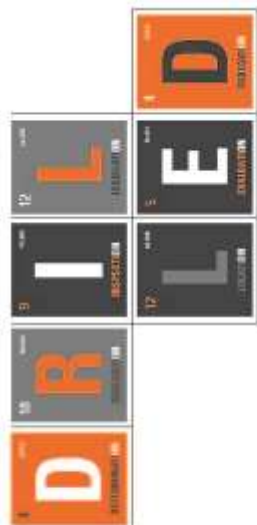
Test  
Borings

3770 Merrick Road  
Seaford, New York 11783  
Phone (516) 221 - 7500  
Fax (516) 221 - 0254

# SOIL MECHANICS

Environmental Site Assessments  
Geoprobe Environmental Sampling  
Inspection-Testing-Drilling

Carl Vernick P.E.  
President



## THE TRUSTED LEADER IN ENVIRONMENTAL DRILLING SERVICES

Since 1985, SGS has helped set the standards of excellence in our industry.

SGS is the world's leading inspection, verification, testing and certification company.

**SGS ENVIRONMENTAL DRILLING**  
**Brian McGuire, General Manager**

t: +1 800 962 7327  
us.envdrilling@sgs.com  
[www.us.sgs.com/drilling](http://www.us.sgs.com/drilling)

WHEN YOU NEED TO BE SURE

**SGS**

## Fast & Accurate Surface and Borehole Geophysics

**Acoustic & Optical Televiewer Logging**

Borehole Video & Geophysical Logging

Multi-Electrode Resistivity Imaging

Seismic Refraction & Reflection

Radar, Magnetics, EM & VLF

Do  
More  
than  
Scratch  
the  
Surface...

**G E O P H Y S I C A L  
A P P L I C A T I O N S**

**I N C O R P O R A T E D**

**Holliston, MA • 508-429-2430**

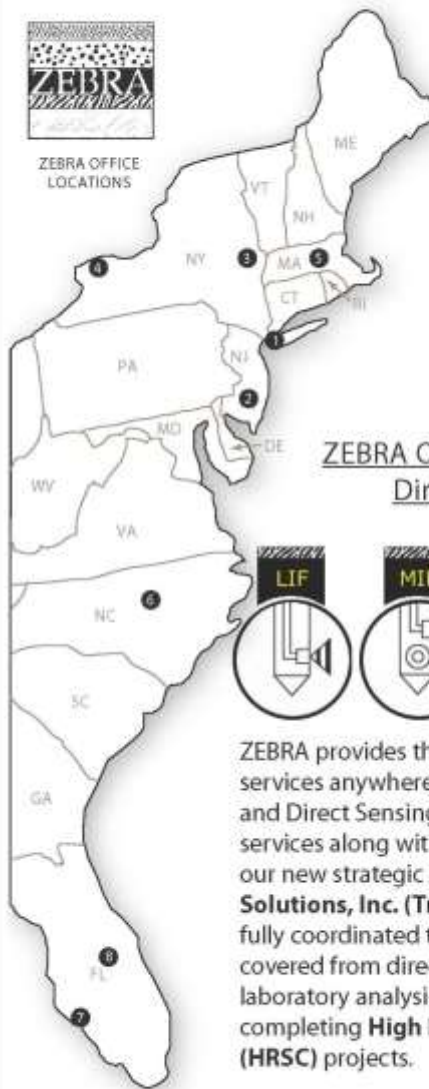
**Ask about our geophysical instrument rentals**

# ZEBRA Environmental Corp.

Providing Subsurface Sampling, Injection and Data Collection  
for Environmental Professionals Since 1992



ZEBRA OFFICE  
LOCATIONS



Headquarters:  
NYC, NJ &  
Southern  
CT Area

1 LYNBROOK, NY  
516-596-6300

2 JACKSON, NJ  
732-275-8333

Upstate NY &  
New England

3 ALBANY, NY  
518-355-2201

4 NIAGARA FALLS, NY  
716-297-6567

5 UXBRIDGE, MA  
508-581-9880

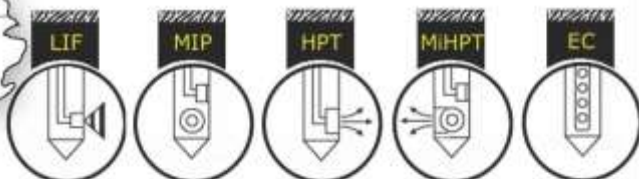
Southeast  
Region

6 CARY, NC  
813-626-1717

7 TAMPA, FL  
813-626-1737

8 Orlando, FL  
813-626-1717

## ZEBRA Offers The Widest Range of Direct Sensing Services:



ZEBRA provides the widest range of Geoprobe/ DPT services anywhere, including a toolbox full of Injection and Direct Sensing systems. ZEBRA is now offering **UVOST** services along with **EC, MIP, MiHPT, CPT, MIP/CPT**. With our new strategic partnership with **TRIAD Environmental Solutions, Inc. (TriadES)** we are able to offer our clients a fully coordinated team of professionals. We have you covered from direct sensing to quantitative on-site laboratory analysis with DPT operators experienced in completing **High Resolution Sites Characterization (HRSC)** projects.

1-800-PROBE-IT

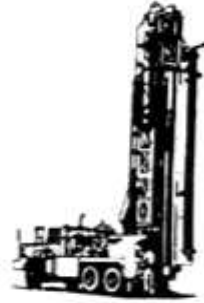
WWW.TEAMZEBRA.COM

# BOYD ARTESIAN WELL CO., INC.

*We design, manufacture and install round holes!*

GEOHERMAL WELLS  
WELL ABANDONMENT  
ROTARY & PERCUSSION DRILLING  
WELLS REPAIRED & DEEPEMED  
COMPLETE WATER SYSTEMS  
HYDROGEOLOGICAL CONSULTING  
MONITORING WELLS

SPLIT SPOON SAMPLING  
EXPLORATORY DRILLING  
HYDROFRACTURING  
IRRIGATION WELLS  
SPECIALTY DRILLING  
GRAVEL WELLS  
SITE ASSESSMENTS



CARMEL, NY

(800) 321-2693

WWW.BOYDARTESIANWELLCO.COM

**Your FULL COLOR  
half-page advertisement  
could be right here!**

**Contact Advertising  
Manager Richard Young  
at [ryoungnj@aol.com](mailto:ryoungnj@aol.com)**

Site & Subsurface  
Investigations

Geotechnical &  
Environmental  
Site Investigations

## SOIL TESTING, INC.

- Test Boring - Core Drilling
- Monitoring Wells
- Micro Piles
- Helical Piers

*53 Years of Drilling Services*

140 Oxford Road, Oxford, CT 06478

1-800-388-4473

(203) 888-4531

fax (203) 888-6247



*AARCO Environmental Services Corp.*

Premier Drilling Company



**AARCO Environmental Services Corp. is a premier full service environmental contracting company. Our expertise includes a wide variety of drilling services:**

*Environmental Drilling, Geotechnical Drilling  
Hollow Stem Auger, SONIC Drilling, Air  
Rotary Drilling, Mud Rotary Drilling, Well  
Installation, Well Decommissioning, Chemical  
Injection, Direct Push, Remote Access,  
Truck and Track mounted rigs.*

**NY & NJ Licensed**



***AARCO Environmental Services Corp.***

50 Gear Avenue, Lindenhurst, NY 11757

Ph: (631) 586-5900 Fx: (631) 586-5910

[www.aarcoenvironmental.com](http://www.aarcoenvironmental.com)

# NEW ENGLAND BORING CONTRACTORS OF CT., INC.

129 KREIGER LANE, GLASTONBURY, CT 06033

*THE RIGHT EXPERIENCE, THE RIGHT EQUIPMENT, THE RIGHT COMPANY*

## Serving New England, NY & NJ

- Test Borings
- Monitor Wells
- Construction Drilling
- Multi-Rig Capabilities



[www.newenglandboring.com](http://www.newenglandboring.com)

(800) 410-5550 • (860) 633-4649 • FAX: (860) 657-8046

## What is AIPG's Mission?

**The mission of the Institute shall include:**

- ◆ Advancing the geological sciences and the profession of geology;
- ◆ Establishing qualifications for professional geologists;
- ◆ Certifying the qualifications of specific individual member geologists to the public;
- ◆ Promoting high standards of ethical conduct among its members and adjuncts and within the profession of geology; and
- ◆ Representing and advocating for, the geological profession before the government and the general public.

Want to reach more than 800 clients?  
Then ADVERTISE!

Contact Dick Young 973-335-2289 or email  
[RYoungNJ@aol.com](mailto:RYoungNJ@aol.com) **to get your company's**  
advertisement in the newsletter.

We offer all size ads from full page to business card  
size and full color to black-and-white.

*(35th Anniversary continued from page 29)*

Section President. Later, Mike was serving as NE Section Secretary-Treasurer when Angelo tragically passed.

Charlie Rich (CPG-04433) provided two detailed stories. Charlie remembers visiting Angelo frequently at his Gibbs & Hill office in Manhattan. At one point, Charlie had just received a job offer from Dames & Moore. Knowing that Angelo had worked for them previously, Charlie sought Angelo's wisdom, experience, and sage advice to assist him in making a decision on whether to take the position offered. Charlie accepted the position. To this day, Charlie considers Angelo instrumental in helping him make his decision, and one of his key mentors that gave him the confidence to accept such a growth opportunity job offer early in his career. Their professional friendship continued in the years that followed, and Charlie feels that Angelo continued to provide supportive motivation for Charlie's subsequent decision several years later to leave Dames & Moore and start his own consulting firm.

Charlie also recalls that one of Angelo's many AIPG contributions was his advocacy for licensing geologists in New York and New Jersey. Angelo was ahead of his time on this topic, often speaking about raising the profile of our profession, and inspiring others (including Charlie) to think in a similar vein. No one could have predicted back then that another 35 years of licensure trials and tribulations, as well as the voluntary efforts of many additional geologists that came after Angelo, would be needed before Angelo's prescient licensure goal became a reality in New York State.

Bob Blauvelt (CPG-06508) recounted two first-hand experiences receiving direct help from Angelo. The first occurred when Bob was applying for AIPG membership; the second occurred upon Bob's attendance at his first NE Section meeting. Bob's AIPG application was accepted by the NE Section reviewers, but one reviewer at National did not think Bob had sufficient work experience. Angelo, a member of the NE Section Screening Board at the time, was having none of it! According to Bob, Angelo called him, introduced himself, and politely and energetically told Bob that the National reviewer was wrong. Angelo then coached Bob on how to respond to the questions

*(35th Anniversary continued on page 59)*

*(35th Anniversary continued from page 58)*

that were posed. Bob re-filed his application and several weeks later, received his CPG certification.

**Undetermined location in northern Iran while on a winter business trip (late 1960s).**



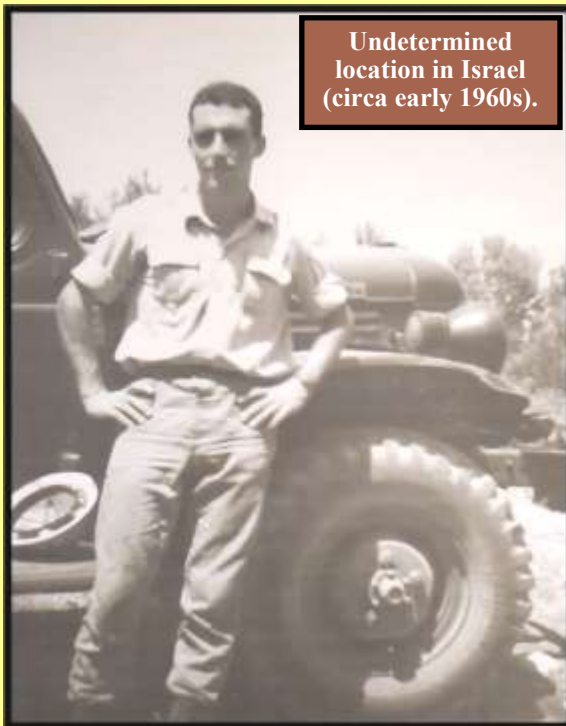
Subsequently, Bob attended his first NE Section ExCom meeting, where he met and thanked Angelo for all his help. With a smile and firm grip on Bob's arm, Angelo then proceeded to introduce Bob to each of the ExCom members as the NE Section's newest CPG. For Bob, it was a wonderful and welcoming moment in his professional career – a moment that Bob still remembers today. In fact, Angelo's thoughtful and inclusive outreach to a young, new NE Section member set a standard that Bob now tries to emulate at each NE Section event .

*(35th Anniversary continued on page 60 )*

*(35th Anniversary continued from page 59)*

Dick Young (CPG-03356) remembers that it was always a very special moment to receive a phone call from Angelo. Typically, the conversation would begin with Angelo asking, “Dick, do you have a few minutes?” Dick soon realized that saying “Yes” was always the right answer, even though their conversations often lasted far longer than ‘a few minutes.’ Dick’s contacts with Angelo started in 1976 after Dick and his family had relocated to New Jersey from Wyoming and **ended all too abruptly on October 11, 1986.**

Their first call, which occurred shortly after Dick received his CPG certification, was an invitation from Angelo to become more involved in the NE Section. Angelo followed up his initial call to Dick with other calls describing what was happening in the NE Section, as well as discussing other topics such as Angelo’s interest and enthusiasm to continue to grow the Section, and opportunities for new and young geologists. A year or two later,



Undetermined  
location in Israel  
(circa early 1960s).

when Angelo was serving as Vice President, he invited Dick to join the ExCom and to consider running as a candidate for an officer position. The rest, as the saying goes, is history. Looking back now, Dick feels that Angelo’s enthusiasm for AIPG and the NE Section had a huge impact on Dick’s focus and continuing involvement in the NE Section and, especially, the scholarship program.

Please see Footnote 1 on [page 65](#) to comprehend and appreciate the immense shift in international relations that has occurred since Angelo worked in a very different Iran in the mid-1960s.

*(35th Anniversary continued on page 61)*

*(35th Anniversary continued from page 60)*

Under Angelo's leadership as President, the occasional NE Section news letter (literally, several pages of Section news formatted into a letter format and mailed to members) was converted into the booklet format that still exists today, 42 years later. Most significantly though, this format allowed the Section to sell advertising space. Through his continuing role as Publisher and Advertising Sales Manager, Dick has been able to expand the 'Newsletter' and the sale of advertising into an art form that has yielded a consistent and substantial annual income stream. This, in turn, has allowed the NE Section to support, nurture and promote the growth of the Angelo Tagliacozzo Memorial Geological Scholarship and Perpetual Trust Fund by reimbursing the Trust Fund for scholarship awards as described previously (see Part 1 – Historical Summary).

Given the foregoing, it is clear that the members of the NE Section have endeavored over the past 35 years to continue the legacy of Angelo in supporting and assisting young geologists and in building the NE Section toward its ever-greater potential.

**For more information on the  
Angelo Tagliacozzo Memorial Geological Scholarship,  
please see [page 81](#) or  
Contact Dennis McGrath at [mcgrathdg@gmail.com](mailto:mcgrathdg@gmail.com)**

**To support this great work and help us grow the  
Perpetual Trust Fund, see [page 82](#).**

### **Acknowledgements**

*Preparation of this article has been a unique and rewarding experience in many ways, but it never could have happened without the participation and contribution of many individuals who we would like to acknowledge and thank. Most importantly, the Tagliacozzo family, especially Rhoda for her detailed recollections of Angelo's work in Iran and his later work in the US. Secondly, Wendy Davidson and Dorothy Combs at AIPG National combed the AIPG archives for information on Angelo's AIPG application and his contributions at the national level. Finally, the eight individuals who recounted their own never-before-told memories of interactions with or about Angelo. Although the names of these individuals appear in the text, we specifically want to thank George Banino, Bob Blauvelt, Charles Dimmick, Steve Maslansky, Mike McEachern, David Miller, Charlie Rich, and Dick Young for their heartwarming and inspirational contributions.*

*(35th Anniversary continued on page 65)*



"We look into the earth"

## PENNSYLVANIA DRILLING CO.

---

FOUNDATION TESTING	INCORPORATED 1900
MONITORING WELLS	
DAM DRILLING	281 ROUTE 30
ENVIRONMENTAL WORK	IMPERIAL, PA 15126
"PENNDRILL" DRILLING SUPPLIES	PHONE 724-695-2400
MONITORING WELL SUPPLIES &	FAX 724-695-2455
MANUFACTURING	800-245-4420

[www.pennsylvaniadrillingco.com](http://www.pennsylvaniadrillingco.com)

# SB CHURCH

WELL & PUMP SERVICES SINCE 1886

49 Great Hill Road, Oxford, CT 06478

**203.888.2132**

[www.sbchurchco.com](http://www.sbchurchco.com)

# GET TO THE SOURCE... THE FIRST TIME!



## with Horizontal Remediation Wells

### Some of the benefits:

- No business interruption during installation
- Maximum exposure to contaminants
- Cost efficient
- Reduced maintenance equipment, and operations cost.

### And a few of the applications are:

- Horizontal Air Sparging
- Horizontal Soil Vapor Extraction
- Horizontal Bio Remediation
- Horizontal Soil Sampling
- Chemical Oxidation
- And many more...

**DIRECTIONAL**  
Technologies, Inc  
*Horizontal Directional Drilling Services*

**203.294.9200**

[www.directionaltech.com](http://www.directionaltech.com) | Email: [ksequino@directionaltech.com](mailto:ksequino@directionaltech.com)

# DRONE COURSE



NE-AIPG is pleased to announce the availability of its online short course in the use of unmanned aerial vehicles in Environmental Site Characterization. This two-hour lecture qualifies for two technical LSRP, LSP, and PG licensure credits and is being taught by one of the leading experts in the scientific use of drone technology: Dr. Francisco J. Artigas Ph.D., the Director of New Jersey's Meadowlands Environmental Research Institute.

The use of unmanned aerial data collection devices (drones) has become a standard tool for many scientific disciplines. Depending upon their mission, drones are equipped to collect data on air quality, land use, water characteristics, and vegetation status. Drones are being and will be used to support site remediation projects in numerous ways, including accessing potential areas of environmental concern within complexes or sites that are inaccessible; the collection of baseline air emissions data from disposal sites (e.g., methane discharge from landfills) or routine monitoring of air emissions during or after remediation; and tracking of stressed vegetation, surface water runoff pathways, and thermal signatures indicative of subsurface reactions.

Drones also are being used to confirm daily cut and fill excavation limits and to establish pre- and post-surface topography at remediation sites. While many geologists have seen drones operate and use the data they generate, this course will provide a more comprehensive understanding of the mechanics of their operation, the regulatory restrictions associated with drone usage, and the type of data packages they can generate. This will allow end users to make informed decisions on when or if drone collected data would be useful and how those data will be processed.

## **Virtual Online 2-Hour Drone Short Course**

**Date: Thursday, October 21, 2021**

**Time: (Registration 9:45 AM)**

**10:00 AM to 12:00 PM**

**Platform: ZOOM Cost: \$125**

**Register Here**

<https://ne-aipg.org/meetinginfo.php?id=25&ts=1632487261>

*(35th Anniversary continued from page 61)*

### Footnote 1.

Iran, when Angelo worked there in the mid-1960s, was a radically different country from what it is today. At that time, Iran was ruled by King Mohammad Reza Pahlavi (the Shah). It was an authoritarian, but very pro-Western style of government. Under the Shah's rule, sweeping changes were implemented, large segments of the country were industrialized, the economy was booming, and educational opportunities for both men and women were expanded. The U.S. and Britain counted Iran as a major ally in the Middle East. Iran became very cosmopolitan and a popular destination for celebrities and heads of state; other governments reciprocated and the Shah and his family widely visited foreign capitals. Job opportunities were plentiful for both the local and international community. That all changed, however, in 1979 when the Shah's authoritarian rule, suppression of dissent, and finally his dismissal of multi-party rule, led to the Islamic Revolution and the dramatically different style of government that still exists today.

This is not intended to be a complete synopsis of what happened in Iran or why; it is presented only to provide comprehension and a better understanding of the international climate that existed at the time.

*(35th Anniversary continued from page 67)*

**SOIL BORING**

**ROCK CORING**

(203) 758-5817 Phone  
(203) 758-0822 Fax



**Portable  
Skid/Propane  
Track  
Truck Rigs**

**Monitor Well  
Specialists  
OSHA  
Certified**

**General  
Borings,  
Inc.**  
SUB-SURFACE INVESTIGATIONS

P.O. Box 7135  
Prospect, CT 06712

**OBSERVATION  
WELLS**

**CONCRETE  
CORING**



## Environmental laboratory solutions provided for your most demanding applications.

The 6th largest environmental testing laboratory in the United States and the largest privately family owned laboratory in the country with more than 50,000 square feet of state-of-the-art laboratory facilities offering:



Air



Sediment & Tissue



Forensic Petroleum



Regulatory Soil



Regulatory Water

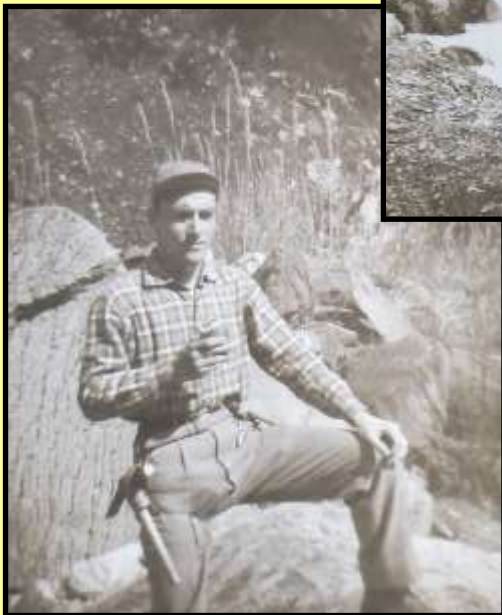
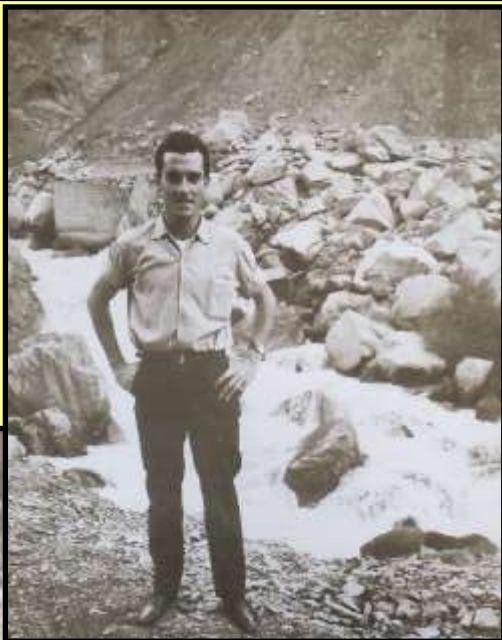


Emerging Contaminants

For more information please contact us at 800-624-9220  
[info@alphalab.com](mailto:info@alphalab.com)  
[www.alphalab.com](http://www.alphalab.com)

Westborough, MA | Mansfield, MA | Brewer, ME | Portsmouth, NH  
Mahwah, NJ | Albany, NY | Buffalo, NY | Rochester, NY | Syracuse, NY | Holmes, PA

**Angelo in the Damavand Mountain foothills, Iran (1964-65).**



**Angelo performing Ph.D. research in the Apennine Mountains, Italy (circa early 1960s).**



**On a mule in the vicinity of Qazvin, Iran (1964-65)**



*(End)*



**GEOD** CORPORATION

AERIAL PHOTOGRAMMETRY • LAND SURVEYING • SUE

***GEOD OFFERS YOU:***



*Photogrammetric Mapping • GIS Base Mapping*



*Subsurface Utility  
Mapping*



*Land & Engineering  
Surveying*



*Construction Surveys*



*Laser Scanning*

**24 Kanouse Road, Newfoundland, NJ 07435**  
**Telephone: 973-697-2122 ■ Fax: 973-838-6433**  
**Email: [marketing@geodcorp.com](mailto:marketing@geodcorp.com)**  
**Website: [www.geodcorp.com](http://www.geodcorp.com)**



***Specializing Exclusively in  
Land, Marine, and Borehole Geophysics***

**TECHNIQUES**

Ground Penetrating Radar  
Seismic Refraction/Reflection  
Magnetics  
Microgravity  
Electromagnetics  
Resistivity  
Electrical Imaging  
Spontaneous Potential  
Multibeam Sonar

Metal Detection  
Side Scan Sonar  
Hydrography  
Geoelectric Leak Detection  
Induced Polarization  
Sub-Bottom Profiling  
X-Ray Fluorescence  
Acoustic Leak Detection  
Borehole Logging and Imaging

**APPLICATIONS**

Rock Depth/Rippability Mapping  
UST / Drum Detection  
Utility Detection / Tracing  
Well/Water Supply Siting  
Fracture Detection  
Sinkhole Mapping  
Ordnance Detection  
Rebar and Cable Mapping  
Grave Detection  
Contaminant Plume Mapping  
Landfill Liner Leak Mapping  
Boring Location Clearance  
Subgrade Washout / Void Mapping  
Seafloor Mapping

Shipwreck Location  
Seismic Hazard Studies  
Hydrocarbon Detection  
Seismic Site Classification  
Bathymetric Surveys  
Well Characterization  
Well Construction Confirmation  
Bridge Pier Scour Detection  
Archeogeophysical Surveys  
Septic System Delineation  
Blast and Vibration Monitoring  
Detection of Foundation Elements  
Water Table Mapping  
Buried Landfill Detection

**7 REASONS TO USE ENVIROSCAN**

- Geophysics is our only product - so we really know what we're doing.
- We own all the gear for all techniques - so we use the right tools every time.
- Since we do only geophysics, we are not your competitor!
- We have 4 licensed PGs on-staff managing or reviewing every project.
- We provide fully electronic / digital / GPS-based mapping and reporting.
- We provide one-stop shopping for land, marine, and borehole geophysics.
- We are WBE - certified.



**717-396-8922**  
1051 Columbia Avenue • Lancaster, PA 17603  
**www.enviroscan.com**





50 Gear Ave  
Lindenhurst, NY 11757



Phone: (631) 979-2890  
Fax: (631) 979-2891  
Email: [locator@optonline.net](mailto:locator@optonline.net)  
Web: [www.x-raylocating.com](http://www.x-raylocating.com)

**We offer:**

- Line Locating
- Ground Penetrating Radar (GPR)
- Video Pipe Inspection (*DVD supplied*)
- Digital Mapping/Reports
- Fault Locating

Short notice? No problem.  
Call us and we'll work with you.

We work on commercial, residential, industrial and government properties

**We find buried:**

- Electric and Communication cables
- Water and Gas lines
- Sewer and Drainage pipes
- Metallic/Non-metallic pipes
- Tanks
- Cesspools/Drywells
- Manhole Covers
- Valves
- Pull-Boxes/Splice Boxes

Our employees are professional, courteous and accommodating

Visit our website  
[www.x-raylocating.com](http://www.x-raylocating.com)  
and fill out our  
Mark-out Request Form



Call or email us now for all your locating needs

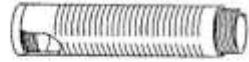
**X-ray**  
Utility Locating Service  
(631) 979-2890  
[locator@optonline.net](mailto:locator@optonline.net)



**Atlantic  
Screen &  
Mfg., Inc.**

Manufacturers of Slotted & Perforated Pipe  
ranging from 1/2" to 24" in diameter

- Well Rehab. Products
- Manholes
- Bentonite
- Filter Sock
- Inline Chemical Mixers
- Sampling Bailers
- Clear PVC Pipe
- Locking Caps



**302-684-3197**  
FAX 302-684-0643

142 Broadkill Rd. • Milton, DE 19968  
[www.atlantic-screen.com](http://www.atlantic-screen.com)  
email: [atlantic@ce.net](mailto:atlantic@ce.net)



**COMPLETE ENVIRONMENTAL TESTING, INC.**

Contact Robert Blake  
Technical Sales Representative

80 Lupes Drive  
Stratford, CT 06615

Tel (203) 377-9984  
Fax (203) 377-9952  
E-mail: [rblake@cetlabs.com](mailto:rblake@cetlabs.com)  
[www.cetlabs.com](http://www.cetlabs.com)

- Since 1886 -

**SAMUEL STOFFHOFF CO., INC.**

Flemington, NJ

WATER AND MONITORING WELL DRILLING  
ROTARY -AUGER-CORE-PROBE RIG  
DOWN HOLE VIDEO INSPECTION SERVICES  
HYDROFRACTURING & WELL REDEVELOPMENT  
7 PUMP SERVICE TRUCKS AND INVENTORY OF 400 PUMPS

Dick Stothoff  
FAX: 908-782-9528

David Lyman  
Phone: 908-782-2116

## **Galapagos Rock Formation Darwin's Arch has Collapsed from Erosion**

By Daniel Victor for The NY Times • May 18, 2021

Darwin's Arch, a famous, photo-friendly rock formation in the remote Galápagos Islands, collapsed on Monday because of natural erosion, Ecuadorean officials said.

The collapse of the natural archway in the Pacific Ocean, about 600 miles west of continental Ecuador, left a pile of rubble between two pillars.

The waters around the arch are known as a destination for divers, with tours from the main islands offering the opportunity to spot sharks, turtles, manta rays and dolphins. The arch was less than a mile from the uninhabited Darwin Island; both are named after Charles Darwin, the scientist whose study of species on the islands in 1835 influenced his theory of evolution and natural selection.

Monuments and islands everywhere are under threat of erosion, sometimes from the simple passage of time. But UNESCO, the U.N. Educational, Scientific and Cultural Organization, has warned that the Galápagos Islands are one



*(Darwin's Arch continued on page 73 )*

*(Darwin's Arch continued from page 72 )*

**of the world's most vulnerable places to the effects of climate change.**

The islands sit at the intersection of three ocean currents and are vulnerable to the El Niño weather system, which causes rapid warming of Pacific Ocean waters. The warming waters threaten the very species that Darwin observed.

Easter Island, also in the Pacific Ocean, stands to be eroded by rising waters, threatening its residents and famed moai statues now within the reach of waves.

The Galápagos, once a destination for only well-off travelers unfazed by the islands' remote location, had seen an increase in tourism before the coronavirus pandemic, with visitor numbers jumping 90 percent between 2007 and 2016. That has concerned some conservationists, who worried the extra visitors would put pressure on the islands' infrastructure and encroach on animal habitats.



**Pictured on page 72 is Darwin's Arch before the collapse, and on page 73 after the collapse.**

**Page 73 Photo credit: Héctor Barrera**

*(End)*



## HOW DO YOU ACCESS DIFFUSION LIMITED PORE-SPACE?

With **COMPLETE CONTROL** of injection **DIRECTION**, **RADIUS**, and **VELOCITY**.

From the grounds of Space Launch Complex 15 at Cape Canaveral, **BADGER INJECTION SOLUTIONS, LLC** is now servicing the Northeast with kinetically adjustable pore space dilation injection techniques to emplace your selected in-situ treatment amendment.

It's all about **CONTACT**, and the Badger Technology **DELIVERS**.

- DAILY injection volumes average 2,500 GALLONS with injection rates of up to 35 GALLONS PER MINUTE
- TARGET SPECIFIC TREATMENT AREAS using a selection of nozzle arrays (360°, 270° or 180°) with a MINIMUM RADIUS OF 15-FEET
- VARIABLE INJECTION FLOW RATES - essential in allowing amendments to diffuse into limited pore spaces



Environmental Assessment & Remediations is the certified BADGER technology provider for the Northeast.

Contact us **NOW** to coordinate your **INJECTION SERVICES** for 2016!

(631) 447-6400 ext 153  
allen@enviro-asmnt.com  
badgerinjectionsolutions.com



ENVIRONMENTAL  
ASSESSMENT &  
REMIEDIATIONS



## Providing Critical Environmental Data on Properties Throughout the U.S.

Envirosite's cost-effective government records database and historical property research solutions are used industry-wide for:

- Environmental Site Assessments (ESAs)
- Environmental Risk Management
- Phase 1 & 2 Reporting
- RSRA Desktop Reviews
- Due Diligence



*Our solutions provide near real-time data delivery. Receive the environmental information you need – when you need it.*

*Contact us at 866-211-2028 and reference our NEAIPG newsletter ad for a FREE TRIAL REPORT.*



*"Quality and Service - the way it used to be."*

- Subsurface Exploration
- Geotechnical Engineering
- Geotechnical Laboratory Testing
- Special Inspections
- Construction Materials Testing
- Environmental Services
- SWPPP Monitoring
- Storm Water Infiltration Testing
- Asbestos Abatement Monitoring



1.800.821.5911 • info@sjbegs.com • www.sjbegs.com

Offices in: Albany, Buffalo, Cortland, Jamestown and Rochester, NY

# CRAFTSMANSHIP You Can Trust

*Put our 65+ years of Experience to the test*

## Services Offered

- Environmental
- Construction
- Alternative Energy
- Maintenance



Visit us online @

[www.islandpumppandtank.com](http://www.islandpumppandtank.com)

# 1-800-458-PUMP

**Two Companies have Joined Forces!**



**ENVIRENT**  
corporation

**Environmental  
RENTAL**

**FREE  
DELIVERY**  
on rental  
orders in  
North Jersey

- PID'S
- Water meters
- Dust meters
- Bailers and  
much more....

**Now bigger and better  
with expanded capabilities  
for all your equipment needs  
while still providing the same  
great personal service you expect.**

**10% OFF**  
your first rental  
with postcard

**(800) 446-8736 and (800) 219-7368**

[www.environmentalrental.com](http://www.environmentalrental.com)

[www.envirent.com](http://www.envirent.com)

## **PIGGYBACKING: SERVICE EXPANDED FOR NE/AIPG ADVERTISERS!**

The NE/AIPG Newsletter has again expanded its Piggybacking options offered to Advertisers. Advertisers can include promotional flyers or brochures along with NE/AIPG's normal distribution of the Newsletter.

Piggybacking gives NE/AIPG Advertisers a cost-effective way to get their promotional material into the hands of NE/AIPG's targeted audience of decision-makers. That audience has grown to over 800, including ~700 NE/AIPG Members and Applicants throughout New York, New Jersey, and the six New England states, as well as ~40± AIPG National and Section Officers, plus over 70 Advertisers, and others. NE/AIPG Members benefit from keeping current on available and innovative products and services.

**Piggyback Rates for digital issues** (see <http://issuu.com/neaipg/docs>):

1. A "Full Page" (~8" high by 5" wide) Space in Full Color costs \$125 per issue.
2. A "Double Full Page" (~8" high by 10" wide) Space in Full Color costs \$225 per issue.
3. A "Quad Full Page" (2 Doubles of ~8" high by 10" wide each) Space in Full Color costs \$425 per issue.

To schedule your Piggyback promotion, or to learn more, just call Dick Young at 973-335-2289 or e-mail [RYoungNJ@aol.com](mailto:RYoungNJ@aol.com).

# Fall Meeting

**Date: Wednesday, October 13**

**Location: Growler & Grill**

**148 NY 59, Nanuet, NY 10954**

<https://growlerandgill.com/>

**REGISTER NOW HERE!**

<https://ne-aipg.org/meetinginfo.php?id=25&ts=1632487261>



**Looking forward  
to SEEING  
everyone!**

# NE/AIPG 2021 PUBLICATION SCHEDULE

## Winter Newsletter

January	11	Deadline (Material to Editor)
January	22	Content to Publisher
February	8	E-mail to Members

## Directory of Members

February	8	Deadline (Material to Editor)
March	12	Content to Publisher
April	12	E-mail to Members

## Spring Newsletter

March	19	Deadline (Material to Editor)
April	2	Content to Publisher
April	19	E-mail to Members

## Autumn Newsletter

July	23	Deadline (Material to Editor)
August	13	Content to Publisher
September	1	E-mail to Members

## Holiday Newsletter

October	8	Deadline (Material to Editor)
October	22	Content to Publisher
November	8	E-mail to Members

Please Email News, Info, & Articles  
to Kim Burger: [kburger@rouxinc.com](mailto:kburger@rouxinc.com) or  
[neaipg.editor@gmail.com](mailto:neaipg.editor@gmail.com)

For Advertising Rates & Info, Please Contact  
Dick Young: [RYoungNJ@aol.com](mailto:RYoungNJ@aol.com) or  
*Cell 203.627.8085*

**ANGELO TAGLIACOZZO MEMORIAL  
GEOLOGICAL SCHOLARSHIP TRUST FUND  
LIST OF CONTRIBUTORS SINCE 1987**

**(All Contributors, Since Fund Inception Through December 31, 2020)**

**FRIENDS OF THE FUND**  
**(\$1,000+)**

Aquifer Drilling & Testing, Inc.  
Banino, George  
Blauvelt, Robert P.  
Dimmick, Charles Wm.  
Kasabach, Haig F.  
Kraemer, Curtis A.  
Leggette, Brashears &  
Graham, Inc.  
McGrath, Dennis G.  
Northeast Section – AIPG  
Rexrode, H. Leonard, Jr.  
Roux Associates  
Roux, Paul H.  
Schiffman, Arnold  
Slayback, Russell G.  
Valkenburg, Nicholas  
Young, Richard H.

Brinckerhoff, Laura  
(In Honor of  
Frank McCarthy)  
Burke, Michael R.  
Con-test Analytical  
Laboratory  
EcoRental  
Gavras, John M.  
Graff, Carol S.  
Harrington, Jonathan  
LONG, DEAN  
Kleiman, Amy  
Miller, David W.  
Neubeck, William S and  
Jean M.  
Nova Consulting &  
Engineering, LLC  
PVE Sheffler  
Rich, Charles A.  
Richter, Dorothy  
Rosenfeld, Mordecai  
Soil Testing, Inc.

**BENEFACTORS (\$500+)**

Allen, Boyd III  
Cascade Drilling, Inc.  
Emerson, Mark  
FPM Remediations  
Frederick, Jeffrey  
Herrick, Dean H.  
Higgins, Jonathan B.  
(In Memory of Leo Hall)  
Kaylor, Kyle  
Mahier, Luke  
McEachern, Michael  
Patota, Jean M.  
Proce, Christopher  
Stone, Timothy S.  
Whitbeck, Luanne

**PATRONS (\$250+)**

Airmag Surveys, Inc.  
Alpha Analytical  
Anonymous

**SPONSORS (\$125+)**

Alpha Geoscience  
Brown, Christopher  
Chamberlain, John Mark  
Climens, Robert H.  
DeAngelis, James  
Eggers, J.  
ERM – Northeast  
Fakundiny, Robert  
Graham, Jack B.  
Greenman, Michael  
Heindel, Craig and  
Chaves, Judith  
Hince, Eric  
Koch, Ellis  
Mathez, Muriel  
Pieriboni, John  
Prehoda, William P.  
Schechner, Claire and Louis  
Scheuing, Laurie  
Standish, Richard

*(Contributors continued on page 80)*

*(Contributors continued from page 79)*

Stewart, Robert A.  
Tsacoyannis, Nicholas  
Urban-Mead, Russell B.  
Waste Management, Inc.  
(Matching Gift on Behalf of  
George Banino)

Torlucci, Joseph  
Tyers, George  
Waring, Andrew D.  
Wenz, Kenneth P.  
Werle, Craig  
West, William T.  
Wohlford, Thomas

**CONTRIBUTORS (\$50+)**

Arguden, A. Tefvik  
Barish, James M.  
Becker, Arthur E.  
Bell, David L.  
Bell, Edward S.  
Bugh, James  
Davis, R. Laurence  
Environmental Compliance,  
Inc. (On Behalf of  
Joseph Torlucci)  
Flick, William  
Gallagher, Evelyn A.  
Hanlon, Kerry  
Herman Karpel Memorial Fund  
(On Behalf of Friends of  
Rhoda Tagliacozzo)  
Hottavange-Tellen, Ken  
Hoogerhyde, Kevin J.  
Housman, John J., Jr.  
Jonathan Paul Associates, Inc.  
Kaczor, Sofia  
Ketani, Ralph  
Mase, David F.  
Maslansky, Steven P.  
McEachern, Jessica  
Mozer, Robert  
Neubeck, William S.  
Penn, William E.  
Rice, John  
Rhyner, John  
Russo, Luigi  
Ryan, Michael J.  
Scott, David  
Shope, Steven  
Siliman, Robert and Roberta  
Sparrow, Leslie  
Stokes, Kurtis W.  
StoneHill Environmental, Inc.  
Tatlock, Derek  
Timmons, Robert

**DONORS (Up To \$50)**

Bablin, Christopher  
Barbour, Richard and Rose  
Becker, Jennifer  
Bowes, James  
Bradley, Margaret  
Busa, Mark D.  
Clausen, Jay  
Cox, Peter  
Falsetta, Sarah  
St. Germain, Daniel J.  
Fournier, Leroy  
Fredrick, William T.  
Gannett Fleming, Inc.  
Hager, Jutta  
Harwood, David G.  
Hergert, David  
Hixon, Richard A.  
King, Daniel  
Kowalski, Richard G.  
Ross, Lauren and Shelley  
Sass, Daniel B.  
(In Honor of K. E. Caster)  
Shakti Consultants  
Sinnot, Joseph  
Skehan, James  
Speidel, David  
Susca, Michael  
Voza, Scott  
Wayland, Russell I  
Weinstock, Eric  
Wheran Engineering

***Why Isn't Your Name  
On This List?  
Solve it!  
Simply see Pages 77-78  
and then***

***Move into Action!***

*(End)*

## **Celebrating 35 Years of Scholarships!** **The Angelo Tagliacozzo Memorial Geological Scholarship**

The Angelo Tagliacozzo Memorial Geological Scholarship was established by the Northeast Section of the American Institute of Professional Geologists in late 1986. The first Scholarships were presented to undergraduate Geology students in 1987.

ATMGS recognizes the dedicated leadership and service which Angelo provided to NE/AIPG, to AIPG, and to the geological profession, until his untimely passing on October 11, 1986. The Scholarship furthers Angelo's goal of acquainting young geologists with AIPG and with AIPG's importance to the geological profession.

### **ANGELO TAGLIACOZZO (1936 - 1986)**

Angelo Tagliacozzo received his doctorate in Geology from the University of Rome (Italy) in 1962. Thereafter, he worked in various positions as geologist, geophysicist, and hydrogeologist, which included assignments abroad, in the U.S., and with the United Nations. Angelo provided exemplary service to AIPG at the Section and National levels. He was a Northeast Section Executive Committee Member (1973-1982), Vice President (1977-1978), President (1979-1980), National Advisory Board Delegate (1981-1982), and Screening Board Chairman (1984-1986). Angelo's dedication to and leadership of the Northeast Section Screening Board has become the ultimate standard against which service in such a position is measured. Angelo also served as an AIPG National Executive Committeeman (1982); he was a vigorous advocate of measures to increase professionalism. Angelo was (and will be remembered as) a respected professional... and a friend.

### **THE SCHOLARSHIP**

NE/AIPG grants Scholarships to undergraduate geology students annually. The Scholarships are designed to help with the cost of summer field courses, textbooks, and other aspects of geological education. Scholarships are awarded, both on academic achievement and on financial need, to students enrolled in recognized geology programs at colleges or universities in New England, New Jersey, & New York.

### **YOUR CONTRIBUTIONS**

Your participation is encouraged in support of this dynamic memorial to Angelo and his recognition of the importance of AIPG to the geological profession. Contributions to the Scholarship Perpetual Trust Fund should be written to:

**Angelo Tagliacozzo Memorial Geological Scholarship Trust Fund**, and mailed to:

**NE/AIPG Geological Scholarship Trust Fund**  
**c/o Dennis McGrath, CPG**  
**1133 Warburton Avenue, Apt. 211N**  
**Yonkers, NY 10701**

*All Contributions* are invested perpetually, with earnings thereon used solely for the Scholarship. NE/AIPG bears all costs of administration. Please ask your employer about *matching your contribution*, and *additional corporate contributions*.

***For further information, contact Dennis McGrath:***  
**[mcgrathdg@gmail.com](mailto:mcgrathdg@gmail.com) Cell: 914-424-8816**

Memorandum

To: Dennis McGrath, Chairman, ATMG Scholarship, Northeast Section, AIPG

From:

Date:

Re: *I'm Taking the Pledge: I'M IN FOR 2021!*

Dear Dennis,

Just a quick note to let you know that I'm 100% with you when it comes to achieving the Section's goal of 100% participation in support of the Scholarship Perpetual Trust Fund during 2021, the 35th Anniversary of the Scholarship! I agree with your encouragement that each and every Section Member make a contribution in accordance with their ability... and this is the one time when I don't want to be the odd person out!

***I'M IN FOR 2021!***

For 2021, the 35th Anniversary, I'm considering pledging... Thirty-five Bucks a Week, Thirty-five Bucks a Month, or Thirty-five Bucks for the Year!

Now, I know it could be more—and you know it could be less!—but I am committed to contributing as much as I can, so I'm not going to delay it any longer: ***I'M IN FOR 2021!***

Yes, my personal budget is tight, but I figure that, somehow, I can set aside \$35 each month (aka the cost of weekly lattes) this year to give back to the profession that has given me so much. Also, I just wanted to tell you I am delighted to know that every one of those hard-earned dollars that I contribute will be INVESTED in the Scholarship Perpetual Trust Fund, so my contribution today can keep on giving, year after year!

And that makes me feel like my contribution really means something, both now and in the long term! I have thought it over, and I know how important 100% participation is for Section pride! So, Dennis, ***I'M IN FOR 2021***

Professionally yours,

\_\_\_\_\_  
*Times are really (GREAT / poor), so I am pledging:*

\_\_\_\_ 35 Bucks a Week (\$1820 for 2021)

\_\_\_\_ 35 Bucks a Month (\$420 for 2021)

\_\_\_\_ 35 Bucks a Year (\$35 for 2021)

Other: \_\_\_\_\_ (Every little bit is better than nothing!)

\_\_\_\_ I'll make it easy on you; I have enclosed my check, made out to "*Angelo Tagliacozzo Memorial Geological Scholarship Trust Fund.*"

\_\_\_\_ Please invoice me for my 2021 pledge by 10/31/2021. I'll pay by 12/1/2021.

Signed: \_\_\_\_\_

Name Printed: \_\_\_\_\_

Address: \_\_\_\_\_

*Mail this Pledge to: NE/AIPG Geological Scholarship Trust Fund, c/o Bob Blauvelt,  
345 Stuyvesant Avenue, Lyndhurst, New Jersey 07071*

- or -

*Email this Pledge to: NE/AIPG Geological Scholarship Trust Fund, c/o Bob Blauvelt  
blauvelt@geiconsultants.com*