

AMERICAN INSTITUTE OF PROFESSIONAL GEOLOGISTS

Northeast Section **NEWSLETTER** *Winter 2019*

As published on 2/24/2019.

INSIGHT PLACES A
SEISMOGRAPH ON
MARS

ARE YOU READY
TO PARTICIPATE IN
THE AIPG ANNUAL MEETING,
RIGHT HERE, IN THE
NORTHEAST SECTION

Save The Date
Sept. 14-17, 2019
Burlington, VT

SAVE THE DATE!
NYSCPG AND AIPG SPRING
MEETING IN BIGHAMTON
DETAILS FORTHCOMING

**A TASTE OF
VERMONT'S CRAFT
BEER!**

**NEED CONTINUING
EDUCATION
CREDITS?**

**CHECK OUT THE UPCOMING
CLASSES**



www.ne-aipg.org



EXCELLENCE ON EVERY LEVEL™

CASCADE provides a full range of environmental and geotechnical drilling, site investigation and characterization, and environmental remediation technologies. Our vision is to integrate technology, safety, sustainability and human potential to tackle the challenging environmental and geotechnical issues facing our clients.

YOUR PARTNER FROM CONCEPT TO CLEAN UP

DRILLING

environmental, geotechnical, utility clearance, IDW, sonic, auger, rotary, direct push

SITE CHARACTERIZATION

high resolution site characterization, sampling, data visualization, MIHPT, UVOST, COREDFINSM, WATERLOOAPSM, MobiLab

REMEDIATION

in situ, ex situ, collaborative design, thermal, chemical, biological, emplacement

CONTACT US

ADT | NEW YORK
Environmental & Geotechnical Drilling
Bill Poupis
516-616-6026 EXT 105
WPOUPIS@AQUIFERDRILLING.COM

CASCADE
Drilling, Investigation & Remediation
Rob Danckert
978-495-6808
RDANCKERT@CASCADE-ENV.COM

VISIT US TODAY AT WWW.CASCADE-ENV.COM TO LEARN MORE

With Cascade offices across the United States, subsidiaries and international partners, we deliver reliable services **nationwide.**

DRILEX

ENVIRONMENTAL



Drilex Environmental is one of New England's premier drilling companies

Drilex Environmental was established in 1995 and is one of New England's fastest growing, premier, full service Drilling and Environmental Construction companies. We are a quality drilling company, able to meet the ever changing needs of our clients.

www.drilexenv.com



Hartwell Business Park • 127 Hartwell Street • West Bovlston. MA
508-835-6724 • Fax: 508-835-6734

AIPG NORTHEAST SECTION NEWSLETTER

WINTER 2019

EDITION No. 155

**PUBLISHED BY THE NORTHEAST SECTION OF THE AMERICAN
INSTITUTE OF PROFESSIONAL GEOLOGISTS**

TABLE OF CONTENTS:

2019 NE/AIPG Executive Committee Directory	<u>5</u>
2019 Executive Committee Meeting Schedule	<u>7</u>
2019 Index of Advertisers	<u>8-9</u>
Presidential Ramblings	<u>11</u>
Annual Meeting Announcement—Burlington, Vermont	<u>15</u>
InSight Places a Seismograph on Mars	<u>17</u>
AIPG Mission Statement	<u>25</u>
Glacial Rocks of Burlington	<u>32</u>
Nominations for the Slayback Award	<u>36</u>
The Colors of Vermont	<u>37</u>
Upcoming Events and Classes	<u>38</u>
Piggybacking for Advertisers	<u>42</u>
Granite Quarrying in Vermont	<u>50</u>
October Meeting Minutes	<u>52</u>
December Meeting Minutes	<u>67</u>
Beer Review—When in Vermont, Part 1	<u>71</u>
ATMG Scholarship List of Contributors	<u>81</u>
NE AIPG 2019 Publication Schedule	<u>83</u>
ATMG Scholarship Overview	<u>84</u>
Angelo Tagliacozzo Scholarship Perpetual Trust Fund Contribution Form <i>(Please contribute now!)</i>	<u>Last Page</u>

NEWSLETTER EDITOR/CO-EDITOR

*Brandon Tufano / Matthew Rashty
Roux Environmental Engineering
and Geology, D.P.C.
209 Shafter Street
Islandia, NY 11749
631-630-2347 (Office)
570-702-9992 (Cell)
btufano@rouxinc.com*



PUBLISHER & ADVERTISING MANAGER

*Dick Young
Consulting Geologists, LLC
179 Intervale Road
Parsippany, NJ 07054
973-335-2289 (Office)
973-335-9799 (Fax)
RYoungNJ@aol.com*

The Newsletter of the Northeast Section of the American Institute of Professional Geologists is digitally published four times annually at www.issuu.com/neaipg/docs. Design and layout by Brandon Tufano/Matthew Rashty and Dick Young. Section Members and Advertisers are alerted to each issue by e-mail. Many thanks are extended to all who helped in compiling this issue.

2019 NEAIPG EXECUTIVE COMMITTEE AND SUBCOMMITTIES

PRESIDENT

Michael G. Grifasi, CPG-11489
FPM Remediations, Inc.
181 Kenwood Ave
Oneida, NY 13421
Office: (315) 336-7721 X215
Fax: (917) 336-7722
Cell: (917) 767-2662
Email: m.grifasi@fpm-remediations.com

PRESIDENT ELECT

Jennifer Becker
HDR Inc.
1 International Blvd
Floor 10
Mahwah, NJ 07495
Work: (201)-335-9336
Cell: (845)-664-5218
jennifer.becker@hdrinc.com

PAST PRESIDENT

Jessica McEachern, CPG-11869
37 Spencer Street W
Farmingdale, NY 11735
Office: (516) 694-5212
E-mail: geode78@verizon.net

SECRETARY

Adelina E Prentice
FPM Remediations Inc.
181 Kenwood Ave
Oneida, NY 13421
Work: 315-336-7721 ext 228
Fax: (315) 336-7722
Email: a.prentice@fpm-remediations.com

TREASURER

Robert P. Blauvelt, CPG-06508
GEI Consultants
300 Broadacres Dr, Suite 100
Bloomfield, NJ 07003
Office: (973) 873-7127
Cell: (973) 803-0167
Fax: (973) 509-9625
rblauvelt@geiconsultants.com

MEMBERS

Christopher Brown, CPG-10599
PVE Sheffler, LLC
48 Springside Avenue
Poughkeepsie, NY 12603
Office: (865) 454-2544
Cell: (914) 475-2650
E-mail: cbrown@pvesheffler.com

Brandon Tufano, MEM-229020
Roux Environmental Engineering and Geology,
D.P.C.
209 Shafter St.
Islandia, NY 11749
Office: (631) 630-2347
E-mail: btufano@rouxinc.com

Member at Large

Jeff Frederick, CPG-10989
The Louis Berger Group, Inc.
565 Taxter Rd., Suite 510
Elmsford, NY 10523
Office: (914) 798-3762
Email: jfrederick@louisberger.com

Laurie Scheuing, CPG-09898
46 Homestead Rd
Saratoga Springs, NY 12866-5808
Office: (518) 695-9445
E-mail: lescheuing@aol.com

Luanne Whitbeck, CPG-07923
P.O. Box 637
Singerlands, NY 12159
Office: (518) 475-1008
E-mail: Luanne.whitbeck@gmail.com

Kelly A. Weyer
Clean Globe Environmental LLC
PO BOX 1895, New City, NY 10956
Office: 1-888-454-5923, Ext. 700
kweyer@cg-env.com

SCREENING BOARD CHAIRMAN

Charles A. Rich, CPG-04433
CA Rich Consultants, Inc.
17 Dupont Street
Plainview, NY 11803-1602
Office: (516) 576-8844 Fax: (516) 576-0093
E-mail: crich@carichinc.com

NEWSLETTER EDITOR

Brandon Tufano, MEM-229020
Roux Environmental Engineering and Geology,
D.P.C.
209 Shafter St.
Islandia, NY 11749
Office: (631) 630-2347
E-mail: btufano@rouxinc.com

DIRECTORY OF MEMBERS EDITOR

Curtis A. Kraemer, CPG-06019
111 Van Cedarfield Road
Colchester, CT 06415
Office: 860-861-4644
email: curtkraemer@comcast.net

PUBLISHER & ADVERTISING MANAGER

Richard H. Young, CPG 03356
Consulting Geologists, LLC
179 Intervale Road
Parsippany, NJ 07054
Office: 973-335-2289
Fax: 973-335-9799
E-mail: ryoungnj@aol.com

WEBMASTER

Jessica McEachern, CPG-11869
37 Spencer Street W
Farmingdale, NY 11735
Office: (516) 694-5212
E-mail: geode78@verizon.net

(Executive Committee continued on page 7)



Delta Well & Pump co., Inc.

WATER AND ENVIRONMENTAL DRILLING

97 Union Avenue PO Box 1309 Ronkonkoma, N.Y. 11779

Phone: (631) 981-2255

Fax: (631) 981-2369

Delta serves municipal and industrial customers

Providing a full range of drilling capabilities



(Executive Committee continued from page 5)

2019 NORTHEAST SECTION SUBCOMMITTEES (As updated 2/6/2019)

Advertising Sales: Dick Young

Advisory Board Delegate: Jeff Frederick

Financial Planning and Treasury: Bob Blauvelt, Dick Young

Legislative Liaison and Registration: Tom West (NY), Russell Slayback (CT), Sam Gowan (NY), Tim Stone (NY), Dorothy Richter (NH), Laurie Scheuing (NY)

Membership: Open

Mentoring: Dennis McGrath (Chairperson), Chris Brown

Nominating: Bob Blauvelt, Dennis McGrath

Public Affairs: Dennis McGrath (Chairperson)

Scholarship: Dennis McGrath (Co-Chairperson), Chris Brown (Co-Chairperson), Sam Gowan, Dean Herrick, Craig Werle, Tom West, Kelly Weyer.

Section Directory: Curt Kraemer, Editor, Dick Young, Publisher

Section Meetings: Jessica McEachern, Bob Blauvelt, Chris Brown

Section Newsletter: Brandon Tufano, Editor; Dick Young, Publisher

Screening Board: Charles Rich (Chairperson), Don Bruehl, Carol Graff, William Penn, Daniel Toder, Andrews Tolman, William Prehoda

2019 Executive Committee Meeting Schedule:

January 7th

March 11th

May 13th (date moves to accommodate Spring Meeting on-site)

July 8th

September 16th (or September 17th; during National Meeting @ Burlington)

October 7th

December 9th

Meetings are typically held from 4:00 to 6:00 pm via teleconference.

(End)

2019 INDEX OF ADVERTISERS

AARCO Environmental Services Corp	<u>26</u>
AECOM	<u>61</u>
Allegheny Instruments, Inc	<u>34</u>
Alpha Analytical.....	<u>73</u>
Alpha Geoscience	<u>75</u>
Arcadis	<u>41</u>
Atlantic Screen & Mfg., Inc.....	<u>55</u>
Badger Injection Solutions	<u>19</u>
Boyd Artesian Well Co., Inc	<u>59</u>
Brinkerhoff Environmental Services, Inc	<u>34</u>
Cascade Drilling	<i>Inside Front Cover...</i> <u>2</u>
CHA	<u>80</u>
Church, Stephen B., Co.....	<u>79</u>
Complete Environmental Testing, Inc.....	<u>75</u>
ConeTec, Inc	<u>47</u>
Connecticut Test Borings, LLC	<u>75</u>
CSG Environmental Consultants.....	<u>46</u>
Delta Well & Pump Co., Inc	<u>6</u>
Directional Technologies, Inc.....	<u>54</u>
Drilex Environmental, Inc	<u>3</u>
EAI, Inc.....	<u>62</u>
Eastern Analytical, Inc	<u>20</u>
EnviRent Corporation	<u>57</u>
Enviroscan	<u>43</u>
Envirosite Corporation	<u>28</u>
EWMA	<u>57</u>
FPM-Remediations	<u>78</u>
Gannett Fleming	<u>24</u>
GEI Consultants, Inc.....	<u>77</u>
General Borings, Inc.....	<u>40</u>
GEOD Corporation.....	<u>14</u>
Geophysical Applications, Inc	<u>56</u>
GEOSPHERE Environmental Management, Inc.	<u>70</u>
Geologic Mapping and Resource Evaluation, Inc.....	<u>35</u>

(Index of Advertisers continued on page 9)

(Index of Advertisers continued from page 8)

2019 INDEX OF ADVERTISERS

Hager GeoScience, Inc	<u>59</u>
Hager-Richter Geoscience, Inc	<u>27</u>
Haley & Aldrich	<u>42</u>
Hetager Drilling, Inc.	<u>21</u>
Island Pump and Tank	<u>40</u>
Layne Christensen Company	<u>30</u>
Leggette, Brashears & Graham, Inc.	<i>Outside Rear Cover...85</i>
Lincoln Applied Geology, Inc.	<u>60</u>
McLane Environmental, LLC	<u>20</u>
MC Environmental, LLC	<u>60</u>
Maine Test Borings	<u>28</u>
Mott MacDonald	<u>72</u>
NAEVA Geophysics, Inc.	<u>63</u>
New England Boring Contractors of CT., Inc.	<u>29</u>
Pennsylvania Drilling Company	<u>64</u>
Probe Support Services	<u>10</u>
PVE	<u>47</u>
Quantitative Hydrogeology, Inc	<u>28</u>
Regenesis	<u>80</u>
Rich, C. A., Consultants, Inc.	<i>Outside Rear Cover...85</i>
Richter Geology PLLC	<u>24</u>
Roux Associates, Inc	<u>11</u>
SGS Environmental Services, Inc.	<u>56</u>
SJB Services, Inc.	<u>46</u>
Soil Mechanics Drilling Corporation	<u>53</u>
Soiltesting, Inc.	<u>61</u>
StoneHill Environmental, Inc	<u>21</u>
Stothoff, Samuel, Company, Inc	<u>64</u>
Summit Drilling Co., Inc.	<u>74</u>
Tectonic Engineering	<u>29</u>
Terracon	<u>76</u>
TRC Environmental Corporation	<u>77</u>
X-ray Utility Locating Service	<u>65</u>
Zebra Environmental	<u>58</u>

(End)

www.geoproberentals.com

Geoprobe® Rentals

info@rentaprobe.com
www.geoproberentals.com

*Long Term
Rental
Discounts*



TRAINING Available

7822DT TRACK • 7720DT TRACK
6620DT TRACK • 54LT Track
540MT & 420M Portable
54TR Tractor • Grout Pumps
Manual Slide Hammers • Trailers
Tooling • Liners • Mob/Demob

*Providing various direct push
Geoprobe® machines designed
for unique environmental
settings including wetlands,
shoreslines, residential grounds,
inside buildings and basements
and more...*

888•215•4666

PROBE
SUPPORT SERVICES

www.geoproberentals.com

www.rentaprobe.com



***Presidential
Ramblings
February 2019
By Michael Grifasi***



Presidential Ramblings – Winter, 2019

Happy New Year to all! It's 2019 and that means a new term here at the AIPG-NE Executive Committee! Joining us this term with new titles are:

Michael Grifasi: President and Ramblin' Man

Jennifer Becker: President-Elect

Jessica McEachern: Past President

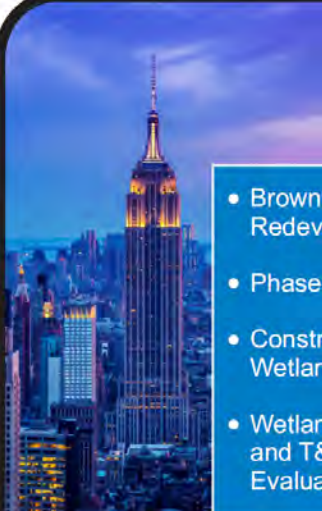
Adelina Prentice: Secretary

Kelly Weyer: Member-at-Large

Jeffrey Frederick: Member-at-Large

Of course, several of the aforementioned and several of the yet-to-be-

(Ramblings continued on page 12)



ROUX

Environmental Consulting & Management

- Brownfield Redevelopment
- Phase I & Phase II ESAs
- Constructed Treatment Wetlands
- Wetland Delineations and T&E Evaluation/Permitting
- Petroleum Remediation
- Stormwater/Wastewater Management
- Remediation Designs
- Litigation Support

We Solve Our Clients' Most Challenging Environmental Problems

For more info: 1.800.322.7689 or www.rouxinc.com

California • Illinois • Massachusetts • New Jersey • New York • Texas

(Ramblings continued from page 11)

mentioned have been volunteering on this committee for quite some time. Believe it or not, it takes a lot to keep our finances sorted (Robert Blauvelt), our advertisers and sponsors coming back (Dick Young), our scholarship program (the Angelo Tagliacozzo Memorial Geological Scholarship), helping students achieve their goals (Dennis McGrath), our newsletter packed with interesting content (Brandon Tufano), and the annual NE/AIPG Directory created and issued (Curt Kraemer). And helping all of us navigate these waters are our remaining members-at-large Chris Brown, Luanne Whitbeck, and Laurie Scheuing. Essentially, none of this would be possible without the contributions of many dedicated volunteers.

What will these volunteers be working on this year? Well, many of you reading this already know that the Northeast Section is hosting the annual AIPG National Conference this September in the beautiful and vibrant lakeside city of Burlington, Vermont. With nine months to go, we're full steam ahead on making sure this conference is worthy not only of our Section, but of AIPG as a whole. We intend to honor the rich geologic history of the Vermont and Adirondack areas as well as to showcase the many cultural offerings that Vermont is famous for. One very important way to make this happen is with your support! If you're reading this and wondering how you can help make this a successful event, please reach out to any one of the folks listed above at <https://ne-aipg.org/board.php>.

For those of you who have not had a chance to visit Burlington, it is a lovely city. My first trip to Burlington was in college, when I drove up from the University at Albany to see a concert at Higher Ground. As a good midpoint between Montreal and New York City, a lot of great live music happens in Burlington.

(Ramblings continued on Page 13)

(Ramblings continued from page 12)

Considering the state of agriculture in Vermont, Burlington also offers phenomenal food, much of which is locally produced. One of my favorite places to dine when in town is a traditional Chinese restaurant called “A Single Pebble”. Right across the street from that spot is a farm-to-table gastropub called “The Farmhouse Tap & Grille”. I have yet to have anything but an amazing meal at The Farmhouse – which not only serves a delicious burger, but also has 20+ tap lines of Vermont’s other treasure – beer. Outside of sunny San Diego, you’ll never find a finer collection of craft breweries ... a number that is growing day by day (and happens to be my favorite thing about this state!!!).

What I’m getting at is this conference will have more to offer than geology ... not that that isn’t enough, I know! Bring your hiking boots, your growlers, your appetite, something warm to wear while dining with us on Lake Champlain, and your passion for your profession. I really think this event is going to be something else, and I’d love for you to enjoy it with us!

Let me wrap this up. Over the last four years, while serving first as Secretary and then President-Elect, I’ve gotten to know some stellar people. I’m humbled to be in the company of so many professionals who work tirelessly to promote the growth of this profession. With the start of my term as President, I’m not only looking forward to serving this Section but to getting the opportunity to connect with all of you.

- Michael

(End)



GEOD CORPORATION

AERIAL PHOTOGRAMMETRY • LAND SURVEYING • SUE

GEOD OFFERS YOU:



Photogrammetric Mapping • GIS Base Mapping



Subsurface Utility Mapping



Land & Engineering Surveying



Construction Surveys



Laser Scanning

24 Kanouse Road, Newfoundland, NJ 07435
Telephone: 973-697-2122 ■ Fax: 973-838-6433
Email: marketing@geodcorp.com
Website: www.geodcorp.com



The American Institute of Professional Geologists NORTHEAST SECTION

American Institute of Professional Geologists - Northeast Section

AIPG National
Conference
Burlington, VT
September 14-17th, 2019



All,



This year the 56th meeting of the American Institute of Professional Geologists National Conference is being held in the beautiful city of Burlington, Vermont. Please set aside September 14th to the 17th to attend this year's conference, "**Geology in the Green Mountains: Scenic Beauty and Economic Engine**".

(Meeting Announcement continued on page 16)

(Meeting Announcement continued from page 15)

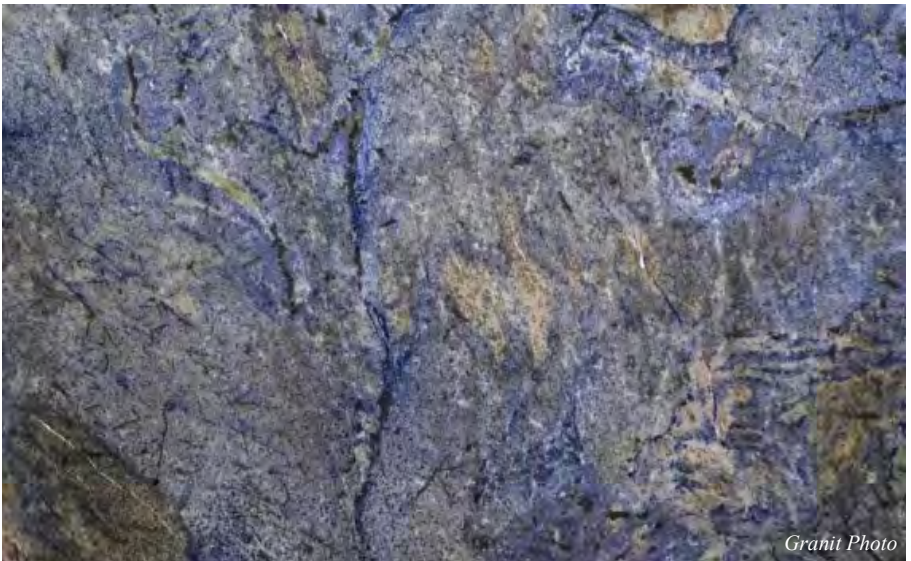
The Northeast section is co-hosting the event and are excited to show off everything we have to offer to our national audience. The AIPG National Conference is traditionally known for high quality field trips. National meetings often host up to 8 different field trips during the meeting, and they are very well attended. Our members come from all corners of the US, North America, and Europe to see the local geology and experience unique geologic terrains. Our membership includes geologic educators, environmental consultants, and mining/oil and gas geologists (to name a few specialties). Many of our members will not have experienced the Green Mountains, the Adirondacks, Lake Champlain, or any of the amazing quarries, famous road-cuts, and beautiful scenery we all take for granted.

Sincerely,

Jeffrey Frederick, PG, CPG

Please keep an eye on your e-mails as updates on Field Trips, courses, and other pertinent information will be distributed by the Newsletter and info@neaipg.org.

(End)

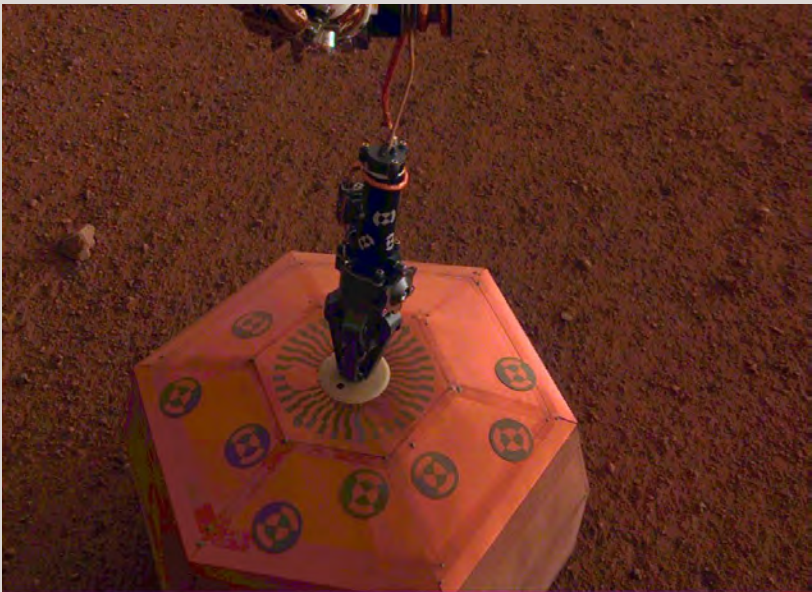


Granit Photo

InSight Places First Instrument on Mars—And It's a Seismograph!

By JPL

On December 19, 2019 NASA's InSight lander deployed its first instrument onto the Martian surface, completing a major mission milestone, and deploying the first robotically placed seismometer on another planet's surface!



The image above shows the seismometer on the ground, its copper-colored covering faintly illuminated in the Martian dusk. It looks as if all is calm and all is bright for InSight, heading into the end of the year.

(Article continued on page 18)

(Article continued from page 17)

"InSight's timetable of activities on Mars has gone better than we hoped," said InSight Project Manager Tom Hoffman, who is based at NASA's Jet Propulsion Laboratory in Pasadena, California. "Getting the seismometer safely on the ground is an awesome Christmas present."



A fish-eye view of NASA's InSight lander deploying its first instrument onto the surface of Mars, taken by the spacecraft's Instrument Context Camera (ICC) on Dec. 19, 2018. Image Credit: NASA/JPL-Caltech.

(Article continued on page 22)



HOW DO YOU ACCESS DIFFUSION LIMITED PORE-SPACE?

With **COMPLETE CONTROL** of injection **DIRECTION**, **RADIUS**, and **VELOCITY**.

From the grounds of Space Launch Complex 15 at Cape Canaveral,

BADGER INJECTION SOLUTIONS, LLC

is now servicing the Northeast with kinetically adjustable pore space dilation injection techniques to emplace your selected in-situ treatment amendment.

It's all about **CONTACT**, and the Badger Technology **DELIVERS**.

- **DAILY** injection volumes average 2,500 GALLONS with injection rates of up to 35 GALLONS PER MINUTE
- **TARGET SPECIFIC TREATMENT AREAS** using a selection of nozzle arrays (360°, 270° or 180°) with a **MINIMUM RADIUS OF 15-FEET**
- **VARIABLE INJECTION FLOW RATES** - essential in allowing amendments to diffuse into limited pore spaces



Environmental Assessment & Remediations is the certified BADGER technology provider for the Northeast.

Contact us NOW to coordinate your INJECTION SERVICES for 2016!

(631) 447-6400 ext 153

allen@enviro-asmnt.com

badgerinjectionsolutions.com

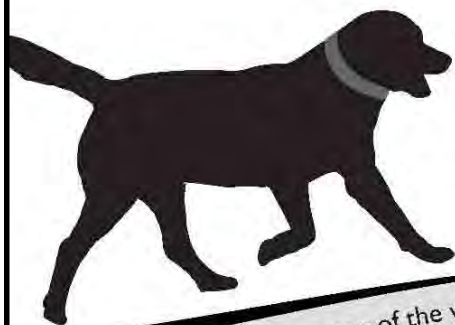


ENVIRONMENTAL
ASSESSMENT &
REMIEDIATIONS



Eastern Analytical, Inc.

Professional laboratory & drilling services



GROUNDWATER
SOIL & SLUDGE
WASTEWATER
STORMWATER
DRINKING WATER
SURFACE WATER

we're with you every step of the way | www.eailabs.com | 800.287.0525

MCLANE ENVIRONMENTAL, LLC

Range of Services

Ground Water Modeling
Contaminant Fate and Transport
Aquifer Characterization
Remediation Design and Optimization
Exposure and Risk Assessment
Water Resources and Supply
Natural Resource Damages
Coastal Zone Modeling
Wastewater Disposal Analyses
GIS and Data Visualization
Litigation Support



Providing ground water consulting services to clients nationwide, including:

- industrial corporations,
- law firms,
- municipalities,
- DOD, DOE, and others.

Specializing in ground water modeling, chemical fate and transport, well field optimization, and litigation support services.

Visit our web site at
www.McLaneEnv.com

E-mail: info@McLaneEnv.com

707 Alexander Road, Suite 206
Princeton, NJ 08540
Ph. 609.987.1400 Fax 609.987.8488

StoneHill Environmental, Inc.

Providing Environmental Consulting Services
Throughout New England Since 1989

- ▶ Phase I & II Due Diligence Assessments
- ▶ Water Resource Impact Studies & Development
- ▶ Rock Blasting Groundwater Impact Studies
- ▶ Expert Witness and Litigation Support
- ▶ Contaminated Site Investigation and Remediation

Contact: Timothy Stone CPG

Licensed Geologist NH, ME, DE, PA / Massachusetts LSP

600 State Street, Suite 2, Portsmouth, New Hampshire 03801
(603) 433-1935 □ (800) 639-4503 □ FAX: (603) 433-1942
NH-WBE/MBE, MA-SOMWBA, WBE Teaming



40-Hour OSHA Trained
MSHA Trained
PERSONNEL
Company Licensed in PA, OH, NY,
WV, & VA

Specialist in Environmental, Geotechnical & Core Drilling
No Job Too Large or Too Small



Split Inner Core Barrels
Hydropunch II (Modified) Hydraulic
Soil Probing

SAMPLING METHODS

Split Spoon Sampling
Continuous Soil Sampling
Single & Dual Packer Testing

Soil Borings
Monitoring Wells
Well Development
CONSTRUCTION
Seal & Abandonment
Pressure Grouting
Piezometer Installation



Wireline Rock Coring System – “B” through 6”

Hollow Stem Augering
Dual Wall Reverse Air
Air & Mud Rotary
DRILLING CAPABILITIES
Air Hammer
Angle Drilling
Indoor Drilling
ATV/Track/Skid/Barge

Pennsylvania Office
1857 Woodland Ave. Ext.
Punxsutawney, PA 15767
Voice – 800-337-4553
Fax – 814-938-8833
phale@hetager.com

Ohio Office
4151 Executive Parkway, Suite 350
Westerville, OH 43081
Voice – 800-337-4553
Fax – 814-938-8833
phale@hetager.com

(Article continued from page 18)

The InSight team has been working carefully toward deploying its two dedicated science instruments onto Martian soil since landing on Mars on Nov. 26. Meanwhile, the Rotation and Interior Structure Experiment (RISE), which does not have its own separate instrument, has already begun using InSight's radio connection with Earth to collect preliminary data on the planet's core. Not enough time has elapsed for scientists to deduce what they want to know - scientists estimate they might have some results starting in about a year.

To deploy the seismometer (also known as the Seismic Experiment for Interior Structure, or SEIS) and the heat probe (also known as the Heat Flow and Physical Properties Probe, or HP³), engineers first had to verify the robotic arm that picks up and places InSight's instruments onto the Martian surface was working properly. Engineers tested the commands for the lander, making sure a model in the test bed at JPL deployed the instruments exactly as intended. Scientists also had to analyze images of the Martian terrain around the lander to figure out the best places to deploy the instruments.

On Tuesday, Dec. 18, InSight engineers sent up the commands to the spacecraft. On Wednesday, Dec. 19, the seismometer was gently placed onto the ground directly in front of the lander, about as far away as the arm can reach - 5.367 feet, or 1.636 meters, away).

"Seismometer deployment is as important as landing InSight

(Article continued on page 23)

(Article continued from page 22)

on Mars," said InSight Principal Investigator Bruce Banerdt, also based at JPL. "The seismometer is the highest-priority instrument on InSight: We need it in order to complete about three-quarters of our science objectives."

The seismometer allows scientists to peer into the Martian interior by studying ground motion - also known as marsquakes. Each marsquake acts as a kind of flashbulb that illuminates the structure of the planet's interior. By analyzing how seismic waves pass through the layers of the planet, scientists can deduce the depth and composition of these layers.

"Having the seismometer on the ground is like holding a phone up to your ear," said Philippe Lognonné, principal investigator of SEIS from Institut de Physique du Globe de Paris (IPGP) and Paris Diderot University. "We're thrilled that we're now in the best position to listen to all the seismic waves from below Mars' surface and from its deep interior."

In the coming days, the InSight team will work on leveling the seismometer, which is sitting on ground that is tilted 2 to 3 degrees. The first seismometer science data should begin to flow back to Earth after the seismometer is in the right position.

But engineers and scientists at JPL, the French national space agency Centre National d'Études Spatiales (CNES), and other institutions affiliated with the SEIS team will need several additional weeks to make sure the returned data are as clear as possible. For one thing, they will check and possibly adjust the

(Article continued on page 25)

DEFINING INNOVATION WITH SUSTAINABLE SOLUTIONS

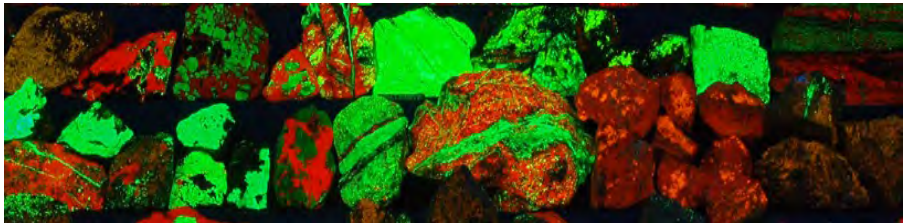


Site Investigation and Remediation
Geotechnical/Earth Sciences
Sustainability
Brownfields Characterization and Redevelopment
Dams and Hydraulics
Environmental Infrastructure
Architecture
Civil
Transportation
Water/Wastewater
Structural
GIS/Information Technology
Construction Management/Design-Build



www.gannettfleming.com

James M. Barish, CPG, LSRP ■ Phone: (609) 584-9592 ■ Cell: (609) 385-5822
jbarish@gfnet.com ■ More than 55 offices worldwide
Suite 203, 3575 Quakerbridge Road, Hamilton, NJ 08619



RICHTER GEOLOGY PLLC

Dorothy Richter, P.G.

(NH, NY, PA, NC, KY, IL, MN)

President

603 231-7845

dorothy.richter@outlook.com

richtergeology.com

(Article continued from page 23)

seismometer's long, wire-lined tether to minimize noise that could travel along it to the seismometer. Then, in early January, engineers expect to command the robotic arm to place the Wind and Thermal Shield over the seismometer to stabilize the environment around the sensors.

Assuming that there are no unexpected issues, the InSight team plans to deploy the heat probe onto the Martian surface by late January. HP³ will be on the east side of the lander's work space, roughly the same distance away from the lander as the seismometer.

(Article continued from page 31)

What are the AIPG Goals?

AIPG Purposes

The purposes of the Institute shall include:

- advance the geological sciences and the profession of geology;
- establish qualifications for professional geologists;
- certify the qualifications of specific individual Member geologists to the public;
- promote high standards of ethical conduct among its Members and Adjuncts, and within the profession of geology; and
- represent, and advocate for, the geological profession before government and the general public.



AARCO Environmental Services Corp.

Premier Drilling Company



AARCO Environmental Services Corp. is a premier full service environmental contracting company. Our expertise includes a wide variety of drilling services:

*Environmental Drilling, Geotechnical Drilling
Hollow Stem Auger, SONIC Drilling, Air
Rotary Drilling, Mud Rotary Drilling, Well
Installation, Well Decommissioning, Chemical
Injection, Direct Push, Remote Access,
Truck and Track mounted rigs.*

NY & NJ Licensed



AARCO Environmental Services Corp.

50 Gear Avenue, Lindenhurst, NY 11757

Ph: (631) 586-5900 Fx: (631) 586-5910

www.aarcoenvironmental.com

HAGER-RICHTER

Geophysics for the Engineering Community

***National Reputation | Nationwide Practice
Take a Closer Look. You'll Like What You See.***

www.hager-richter.com

Main Office

8 Industrial Way—D10
Salem, New Hampshire 03079
T: 603-893-9944

NY / NJ Office

846 Main Street
Fords, New Jersey 08863
T: 732-661-0555

dba HR Geological Services in New York



Have an idea for a Newsletter Article?

We are always more than willing to
incorporate our member's
ideas and experiences
into the quarterly Newsletter!

Submit your ideas to Brandon Tufano at:
btufano@rouxinc.com



Providing Critical Environmental Data on Properties Throughout the U.S.

Envirosite's cost-effective government records database and historical property research solutions are used industry-wide for:

- Environmental Site Assessments (ESAs)
- Environmental Risk Management
- Phase 1 & 2 Reporting
- RSRA Desktop Reviews
- Due Diligence



Our solutions provide near real-time data delivery. Receive the environmental information you need – when you need it.

*Contact us at **866-211-2028** and reference our NEAIPG newsletter ad for a **FREE TRIAL REPORT**.*



Maine Test Borings

18 Mack Lane
Hermon, ME 04401

Jon Rudnicki

Ph: (207) 848-7041

Ph: (800) 698-9142

Cell: (207) 659-1749

Fx: (207) 848-7042

www.mainetest.com

jon@mainetest.com



**QUANTITATIVE
HYDROGEOLOGY
INC.**

- Aquifer Characterization & Conceptualization • Modeling •
- Aquifer Tests → Design, Implementation, & Analyses •
- Flow & Transport Analyses/Evaluations • Environmental Litigation •

Michael A. De Cillis, CPG-6986,

providing Hydrogeologic & Environmental-Consulting Services, and Technical & Logistical Support within the Ground-Water Profession since 1976.

42 Marc Ct. Bay Shore, NY 11706-7351 ~ (631) 859-3507 ~ E-mail: madcillis@optonline.net

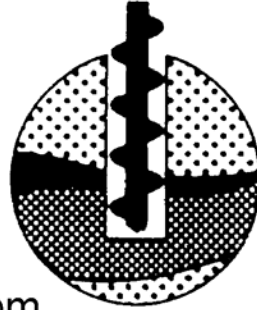
NEW ENGLAND BORING CONTRACTORS OF CT., INC.

129 KREIGER LANE, GLASTONBURY, CT 06033

THE RIGHT EXPERIENCE, THE RIGHT EQUIPMENT, THE RIGHT COMPANY

Serving New England, NY & NJ

- Test Borings
- Monitor Wells
- Construction Drilling
- Multi-Rig Capabilities



www.newenglandboring.com

(800) 410-5550 • (860) 633-4649 • FAX: (860) 657-8046

Tectonic

PRactical SOLUTIONS. EXCEPTIONAL SERVICE.

- NJ Licensed Site Remediation Professional (LSRP) Services
- Phase I/Phase II Environmental Site Assessments
- Industrial Site Recovery Act Services
- Tank Closures & Spill Investigations
- Vapor Intrusion Studies & Mitigation
- Remedial Design of Contaminated Soil/Groundwater
- Terrestrial Ecological Evaluations
- Mold, Asbestos & Lead Management
- Subsurface Investigations & Geotechnical Engineering
- Geotechnical Instrumentation & Monitoring
- Vibration & Noise Monitoring
- Retaining Wall & Excavation Support Systems Design

www.tectonicengineering.com

800.829.6531

NY. NJ. CT. PA.

Looking for Material for the Northeast Section Newsletter—We want you!



From the Editor

There is plenty of room for growth in the Newsletter, and the digital/internet versions offer many opportunities to add value to your organization. So, if you are interested, email Editor Brandon Tufano at btufano@rouxinc.com or Dick Young at ryoungnj@aol.com.



Resource Development and Maintenance



Water Treatment

Layne Christensen's well-trained field crews and experienced staff work with clients to:

- Develop new water sources
- Rehabilitate existing wells, through either chemical or mechanical processes
- Provide pump service (new sales, repairs and installation)

Layne Christensen's professional engineers can assist in determining an appropriate treatment technology. We then fabricate systems scaled to each client's requirements.

Experienced • Equipped • Committed

... Since 1882

New England • (978) 937-2242

New York • (518) 295-8288

Long Island • (631) 218-0749

(Article continued from page 25)

For now, though, the team is focusing on getting those first bits of seismic data (however noisy) back from the Martian surface.

"We look forward to popping some Champagne when we start to get data from InSight's seismometer on the ground," Banerdt added. "I have a bottle ready for the occasion."

JPL manages InSight for NASA's Science Mission Directorate in Washington. InSight is part of NASA's Discovery Program, which is managed by NASA's Marshall Space Flight Center in Huntsville, Alabama. Lockheed Martin Space in Denver built the InSight spacecraft, including its cruise stage and lander, and supports spacecraft operations for the mission.

A number of European partners, including CNES and the German Aerospace Center (DLR), support the InSight mission. CNES provided SEIS to NASA, with the principal investigator at IPGP. Significant contributions for SEIS came from IPGP, the Max Planck Institute for Solar System Research in Germany, the Swiss Institute of Technology in Switzerland, Imperial College and Oxford University in the United Kingdom, and JPL. DLR provided the Heat Flow and Physical Properties Package (HP³) instrument, with significant contributions from the Space Research Center of the Polish Academy of Sciences and Astronika in Poland. Spain's Centro de Astrobiología supplied the wind sensors.

(End)

What will be under our feet this Fall in Burlington?

By Brandon Tufano

The short answer to the question posed in the title is, ROCKS! But all of us not familiar with the region would certainly like to know, what kind of rocks? Well, immediately beneath our feet will be surficial sediments of largely glacial origin.

These sediments likely arrived when the Laurentide Ice Sheet spread across much of northeastern and north-central parts of North America in a nearly 3,000 km thick sheet. With few exceptions, the surficial materials underlying most of New England are all directly or indirectly a result of this last big glacier. At its most southern and southeastern reaches, the toe of the Laurentide Ice Sheet touched Long Island, Cape Cod, and several hundred kilometers beyond the present coast line of Maine.

Beneath the glacier, ice either sat directly on rock or, in most cases, on a mixture of rocks, sand, silt, and clay (glacial till). This rock till or “hard pan” occurs in the Burlington area, so keep an eye out near places where bedrock ledges are exposed and along stream channels and the Lake Champlain shoreline where the overlying glacial sediments have been eroded away.



Glacial deposits along Lake Champlain. (Wikipedia).

(Burlington Glacial Geology Continued on page 33.)

(Burlington Glacial Geology Continued from page 32.)

It is also common to find glacial erratics, rocks not native to the Champlain valley, that were transported by the glacier and deposited when it retreated. The most distinctive of these are the coarse-grained metamorphic rocks from the Laurentian Mountains of Québec.



Glacial erratic, Sentinel Rock State Park (Vermont.gov).

Other distinctive features include glacial scouring of the underlying dolostone in the Burlington area. **WATCH WHERE YOU WALK!...** But keep your eyes open for these tell tale cross hatch patterns.



Scours in dolostone. (S.F.Wright, Vermont.gov)

(End.)

BRINKERHOFF



ENVIRONMENTAL SERVICES, INC.

Geologists • Hydrogeologists • Environmental Scientists

**Environmental Consulting • Environmental Permitting
Site Investigation • Soil and Groundwater Remediation**

1805 Atlantic Ave. • Manasquan, NJ 08736
Tel: 732-223-2225 • Fax: 732-223-3666 • www.brinkenv.com

Check out our Advertiser hotlinks wherever there is a website or email listed in an advertisement!



GeoVISION™ BOREHOLE
VIDEO CAMERA SYSTEMS

**Hand Reel to 1000 Feet, Electric Winch to 2000 Feet
Joystick-Controlled Pan Tilt or Dual View Cameras**



Bore Diameters From 1-Inch To Mine Shafts

sales@alleghenyinstruments.com
www.alleghenyinstruments.com

800-255-1353
802-626-5302



www.gmre.co/education.php

Online Continuing Education Courses for Geologists and Engineers



Satisfy Your Continuing Education Requirements Easily and Inexpensively

Course #1001

Pyrite at Skytop: I-99 History and Geologic Setting

Course #1002

Pyrite at Skytop: Local Geology

Earn 4.0 PDH credits for each course

www.gmre.co/education.php

Arnold G. Doden, Ph.D., P.G.
Geologic Mapping and Resource Evaluation, Inc.
925 W. College Ave., State College, PA 16801

Phone: 814.571.7716
Email: Arnold@gmre.co
www.gmre.co/education.php

Nominations For The Slayback Award

Anyone may provide written, descriptive nominations of candidates (. . . and of their contributions to NE/AIPG) for the Slayback Award, **by CONFIDENTIALLY submitting the nomination in writing to any one of the previous recipients** (including Russ Slayback, Dick Young, Dennis McGrath, Dan St. Germain, Tom West, Curt Kraemer, and Bob Blauvelt).

The concept of the Russell G. Slayback Award is to provide: "Honor and Recognition of Exemplary Service, Above and Beyond, To the Northeast Section of AIPG." Thus, the Slayback Award is intended to be presented *on those rare occasions* when truly landmark, exemplary service has been given to the Northeast Section of AIPG for a protracted period of time by an AIPG Certified Professional Geologist who is a Member of the Northeast Section. "*On those rare occasions*" is the operative phrase, as the Slayback Award was never intended to be "*presented annually*." Confidentiality, to maintain the element of surprise in honoring the Recipient and his/her long service, is a cornerstone concept of the Slayback Award.

Selection of Awardees is made by the previous recipients, in confidential discussions with the NE/AIPG Section President. Individual Members of the ExCom may be consulted for their input on a confidential basis. Confidentiality, to maintain the element of surprise in honoring the Recipient (s) and his/her/their long service, is a cornerstone concept of the Slayback Award.



Who do you know that has helped NE-AIPG on it's road to success?

Vermont and the Northeast corridor in general is known for its Fall foliage. The changing of the leaves is an event that draws people from around the world and indeed it can even be seen from space...

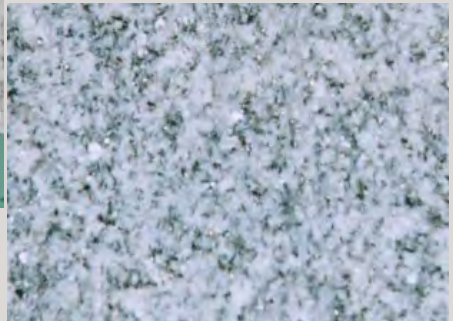


Vermont foliage in Autumn. Photo credit the Green Mountain Drone, October 2016. *No copyright infringement intended.*

Beneath this ephemeral conflagration of color... the more enduring colors of Vermont persist!



The famous granite quarries of Vermont...



Quarry photo credit—TravelInGeek, 2015.
No copyright infringement intended.

Upcoming Events and Classes In our Section! Save Your Seat Now!!

Association of Environmental & Engineering Geologists
New York—Philadelphia Chapter

Just Past! Keep An Eye Out For Talk #3

Mesozoic Rift Basin Talk Series - Talk #2 “Case Study from the Culpeper Basin, VA”

Presented by

**Jesse Drummond, PG - EA Engineering, Science, and
Technology, Inc., PBC**

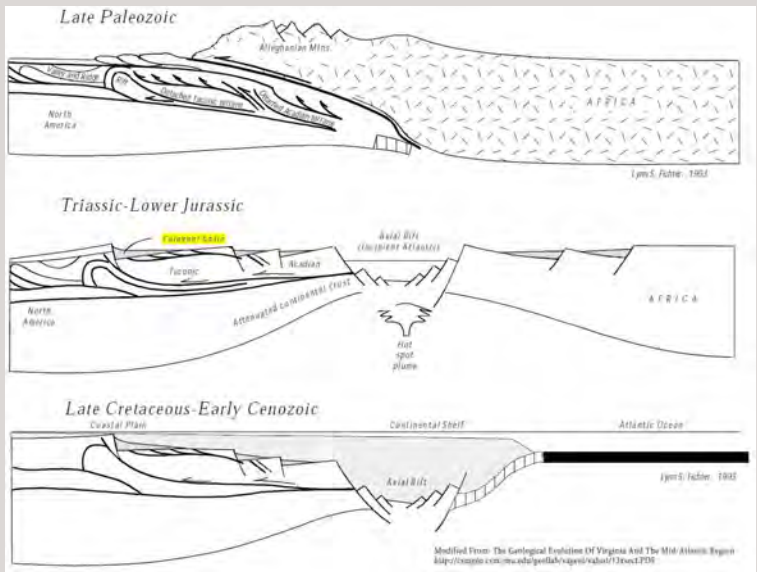
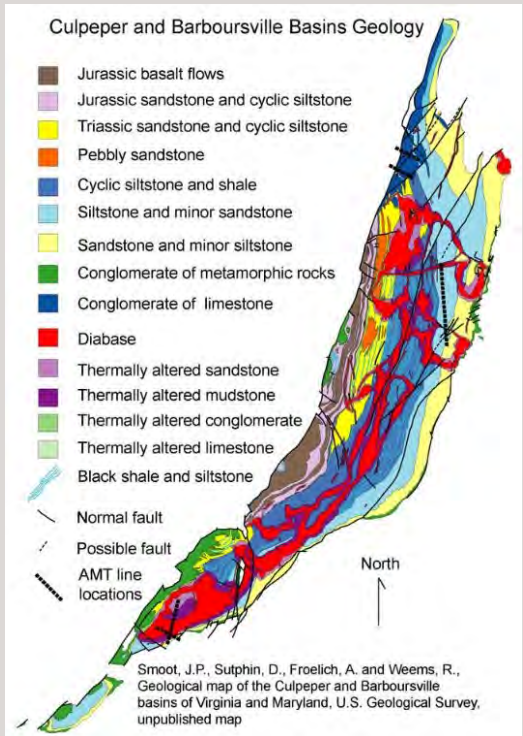
ABSTRACT

This event, the second in a four-part series of AEG Mesozoic rift basin talks, features the Culpeper Basin of Virginia. This presentation explores the Culpeper Basin's geologic history and highlights the stratigraphic and structural characteristics that generally regulate groundwater flow within the basin. A comparison of the Culpeper Basin to other rift basins along the eastern seaboard will be followed by a Conceptual Site Model case study from site characterization and remediation activities conducted at an EPA Superfund site within the Culpeper Basin.

BIOGRAPHY

Jesse Drummond, PG is a research geologist and environmental consultant with the Site Characterization and Remediation group at EA Engineering, Science, and Technology, Inc., PBC. Over the last 9 years, he has contributed to structural geologic and hydrogeological evaluations at fractured bedrock sites in NY, NJ, PA, DE, MD, and VA. Most recently, his project work in the Culpeper Basin of Virginia has incorporated concepts from others' previous and ongoing research within the Newark Basin (and other Mesozoic rift basins) due to the extensive similarities that have resulted from the basins' shared geologic history. Additional areas of research and professional interest include 3-D geologic modeling and the application of sequence stratigraphic concepts to site characterization and remediation projects.

(Upcoming Events Continued on page 39.)



SOIL
BORING

(203) 758-5817 Phone
(203) 758-0822 Fax

ROCK
CORING

Portable
Skid/Propane
Track
Truck Rigs



Monitor Well
Specialists
OSHA
Certified

**General
Borings,
Inc.**
SUB-SURFACE INVESTIGATIONS

P.O. Box 7135
Prospect, CT 06712

OBSERVATION
WELLS

CONCRETE
CORING

CRAFTSMANSHIP You Can Trust

Put our 65+ years of Experience to the test

Services Offered

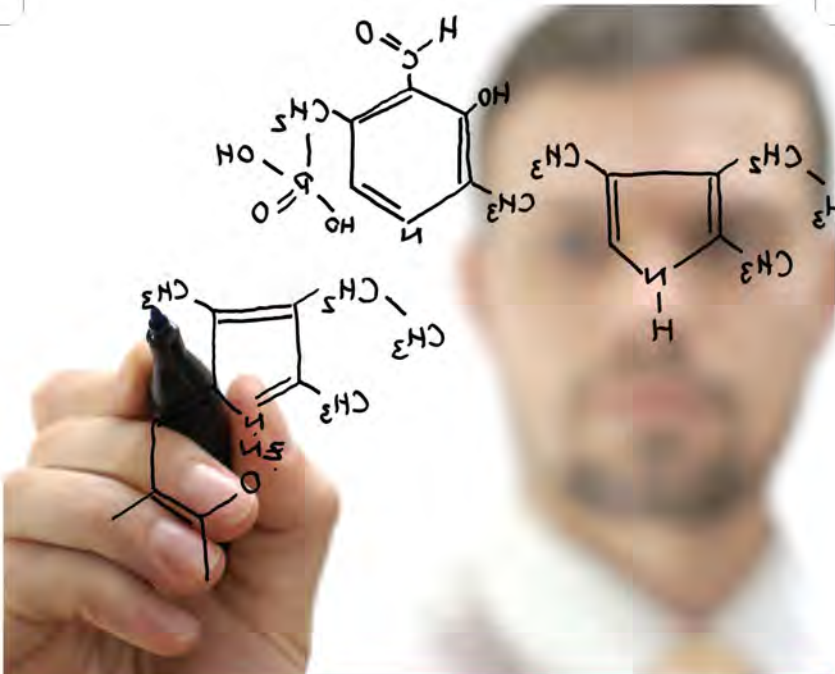
- Environmental
- Construction
- Alternative Energy
- Maintenance



Visit us online @
www.islandpumpandtank.com

ISLAND
Pump & Tank

1-800-458-PUMP



Solutions to complex challenges

A continually shifting world makes any engineering design solution difficult, often overwhelming. We help you overcome these challenges.

First, we start with you – defining true value and a successful outcome. With a deep understanding of the nexus between regulatory, technological and environmental drivers, we deliver certainty on cost-effective projects and programs that meet and exceed your goals.

Together we can do a world of good.

www.arcadis-us.com

Two Huntington
Quadrangle Suite 1510
Melville, NY 11747
631 249 7600

Imagine the result

 **ARCADIS**
Infrastructure · Water · Environment · Buildings

PIGGYBACKING: SERVICE EXPANDED FOR NE/AIPG ADVERTISERS!

The NE/AIPG Newsletter has again expanded its PiggyBacking options offered to Advertisers. Advertisers can include promotional flyers or brochures along with NE/AIPG's normal distribution of the Newsletter.

PiggyBacking gives NE/AIPG Advertisers a cost-effective way to get their promotional material into the hands of NE/AIPG's targeted audience of decision-makers. That audience has grown to over 800, including ~700 NE/AIPG Members and Applicants throughout New York, New Jersey, and the six New England states, as well as ~40± AIPG National and Section Officers, over 70 Advertisers, and others. NE/AIPG Members benefit from keeping current on available and innovative products and services.

PiggyBack Rates for digital issues (see <http://issuu.com/neaipg/docs>) are:

1. A "Full Page" (~8" high by 5" wide) Space in Full Color costs \$125 per issue.
2. A "Double Full Page" (~8" high by 10" wide) Space in Full Color costs \$225 per issue.
3. A "Quad Full Page" (2 Doubles of ~8" high by 10" wide each) Space in Full Color costs \$425 per issue.

To schedule your PiggyBack promotion, or to learn more, just call Dick Young at 973-335-2289 or e-mail RYoungNJ@aol.com.

**HALEY &
ALDRICH**

**Building communities.
Improving our infrastructure.**

Creating new possibilities with clients.

- Property development and brownfields reuse
- Remedial investigations, design and construction
- Environmental, health and safety management
- Energy facility and linear utilities development
- Underground construction risk management
- Sustainable design enhancement

25 Offices Nationwide • T. 617.886.7400 • HaleyAldrich.com



***Specializing Exclusively in
Land, Marine, and Borehole Geophysics***

TECHNIQUES

Ground Penetrating Radar
Seismic Refraction/Reflection
Magnetics
Microgravity
Electromagnetics
Resistivity
Electrical Imaging
Spontaneous Potential
Multibeam Sonar

Metal Detection
Side Scan Sonar
Hydrography
Goelectric Leak Detection
Induced Polarization
Sub-Bottom Profiling
X-Ray Fluorescence
Acoustic Leak Detection
Borehole Logging and Imaging

APPLICATIONS

Rock Depth/Rippability Mapping
UST / Drum Detection
Utility Detection / Tracing
Well/Water Supply Siting
Fracture Detection
Sinkhole Mapping
Ordnance Detection
Rebar and Cable Mapping
Grave Detection
Contaminant Plume Mapping
Landfill Liner Leak Mapping
Boring Location Clearance
Subgrade Washout / Void Mapping
Seafloor Mapping

Shipwreck Location
Seismic Hazard Studies
Hydrocarbon Detection
Seismic Site Classification
Bathymetric Surveys
Well Characterization
Well Construction Confirmation
Bridge Pier Scour Detection
Archeogeophysical Surveys
Septic System Delineation
Blast and Vibration Monitoring
Detection of Foundation Elements
Water Table Mapping
Buried Landfill Detection

7 REASONS TO USE ENVIROSCAN

Geophysics is our only product - so we really know what we're doing.
We own all the gear for all techniques - so we use the right tools every time.
Since we do only geophysics, we are not your competitor!
We have 4 licensed PGs on-staff managing or reviewing every project.
We provide fully electronic / digital / GPS-based mapping and reporting.
We provide one-stop shopping for land, marine, and borehole geophysics.
We are WBE - certified.



717-396-8922

1051 Columbia Avenue • Lancaster, PA 17603

www.enviroscan.com



Upcoming Events and Classes In our Section! Save Your Seat Now!!

ANNOUNCEMENTS

Save the Date for the Remaining Talks in the Series

Please save the dates below! Following this second dinner meeting, the AEG New York - Philadelphia Chapter will continue this series of talks highlighting Conceptual Site Models (CSMs) developed and applied for site remediation in Mesozoic rift basin environments along the eastern seaboard. Three sequential talks (one each month) are following the January overview and debate, providing case studies with lessons learned specific to Mesozoic basin CSMs; one each for the Culpeper, Hartford, and Newark Basins.

- March 14, 2019 - Case Study from the Hartford Basin, CT - Michael J. Gefell, PG, CPG
- April 11, 2019 - Case Study from the Newark Basin, NJ - Bob Bond, PG

Fifth Annual Student Night - March 28th

The AEG NY-P Chapter will be hosting its fifth annual Student Night on Thursday March 28, 2019. This event provides a great chance for professionals and students to meet and interact, while learning about the students' research through poster presentations. Students representing many colleges and universities across New Jersey, New York, and Pennsylvania always attend this great event, so let's show them what a good community of geology professionals we have in this area.

Call for Nominations for the AEG 2019 outstanding Environmental and Engineering Geologic Project Award

The Outstanding Environmental and Engineering Geologic Project Award was established in 1993 to recognize a project that meets the following criteria:

- Displays national or international significance.
- Demonstrates the application of the principles of environmental and engineering geology to the solution of a problem affecting the public.
- Shows recognition of and respect for the environment and history and culture of the project area.
- Provides an opportunity for public education in environmental and engineering geology; environmental issues, and culture and history of the area.

A nomination package should be submitted to AEG President David Fenster (rockpic001@gmail.com) and AEG headquarters (Manager@AEGweb.org) by **March 1, 2019**. Details about what is needed for the nomination package can be found on <https://www.aegweb.org/page/OEEGProjectAward>, or by contacting the above e-mail addresses.

Submit Your Abstracts for the AEG 2019 Annual Meeting

The Association of Environmental & Engineering Geologists 2019 Annual Meeting invites you to submit an abstract for publication and presentation at the 67th Annual Meeting in Asheville, North Carolina September 17-22, 2019. Abstract online submittal is now open. The deadline to submit your abstract is May 1, 2019. For complete meeting details and to register, please visit www.aegannualmeeting.org. For details on how to submit your abstract, please click [here](#) or click the Technical Program tab on the Annual Meeting website.

Support the AEG Foundation

Established by the AEG in 1992, the AEG Foundation plays a key role in the success of our profession. The AEG Foundation's vision is to create a culture of giving back to the profession, and to instill complete confidence in donors that their money is well-invested and well-spent. Our core programs emphasize scholarship, research, and professional development to improve professional practice. We support outreach to increase the public's appreciation of environmental and engineering geology in geo-hazard evaluation and risk reduction. The AEG Foundation established the Research Fund to support small research projects that advance the science and application of environmental and engineering geology. Scholarship awards are based upon demonstrated scholarship, ability, participation, and potential for contributions to the profession.

For more information on the AEG Foundation and its many programs log on to www.aegfoundation.org.

New York-Philadelphia Board and Committee Members:

Chair: Jim Peterson, Princeton Geoscience

Vice Chair: Rose DeLorenzo, LSRP Consulting

Treasurer: Niall Henshaw, Parsons

Co-Secretaries: Tyler Thompson & Tim Hull, Princeton Geoscience

Bylaws Chair: Curt Schmidt, H2M

Membership Chair: Thomas Cumello, Dewberry

Programming Chair: Mike Newton, Stantec

Social Media Chair/Webmaster: Jennifer Cherlin, Mott MacDonald

Student Outreach Chair: Amanda Forsburg, Langan & Alexander Gates, Rutgers-Newark

Field Trip Chair: Ricky Chenenko, CDM Smith

Newsletter Editor: Loren Lasky, Director, AEG Foundation

NJ Regulatory Liason: Ted Toskos, Woodard & Curran

PA Regulatory Liason: Curt Schmidt, H2M

NY Regulatory Liason: George Marshall

Are you interested in getting involved? Let us know! Email us at aeg.nyp@gmail.com



EMPIRE GEO
SERVICES, INC.
A SUBSIDIARY OF SJB SERVICES, INC.

"Quality and Service - the way it used to be."

- Subsurface Exploration
- Geotechnical Engineering
- Geotechnical Laboratory Testing
- Special Inspections
- Construction Materials Testing
- Environmental Services
- SWPPP Monitoring
- Storm Water Infiltration Testing
- Asbestos Abatement Monitoring



1.800.821.5911 • info@sjbegs.com • www.sjbegs.com

Offices in: Albany, Buffalo, Cortland, Jamestown and Rochester, NY

C S G

ENVIRONMENTAL CONSULTANTS

- ✓ **property transfer site assessments**
- ✓ **groundwater development, management, protection, permitting**
- ✓ **UST closures and investigations**
- ✓ **litigation support**

Carol S. Graff, CPG-06429
109 Renfrew Avenue
Trenton, NJ 08618-3335

Phone: 609-393-4442
FAX: 609-393-5999
E-mail: cgraft5297@aol.com



"Realize Your Vision"



- Assessment & Remediation Services
- Vapor Intrusion Evaluations
- Brine Disposal Wells
- Reservoir Evaluation and Gas Storage Facilities
- GIS Services

Contact us today to learn how we can help with your next project!

Environmental • Civil Engineering • Structure Design
Landscape Architecture • Land Planning • Municipal • Energy • Survey

(845) 454-2544 | www.PVE-llc.com | info@PVE-llc.com



Geo-Environmental Site Investigation Services

- Cone Penetrometer Testing • Piezo, Resistivity and Seismic Cones
- Ultra Violet Induced Fluorescence (UVIF) CPT, Natural Gamma (GCPT)
- Limited Access Drilling and Cone Penetration Testing
- Specialists in Overwater CPT Work
- Direct Push Geo-Environmental Soil Sampling
- Continuous Surface Wave Seismic Testing
- Groundwater and Vapor Sampling
- SPT Energy Calibration
- Customized Electronic Instrumentation
- Electric Piezometer Sales and Installation

Conetec serving the U.S. And Canada with offices in:

West 1-800-567-7969 • East 1-800-504-1116

www.conetec.com • insitu@conetec.com

Vancouver, BC • Edmonton, AB • Salt Lake City, UT • West Berlin, NJ • Charles City, VA



ITRC's 2018 Training Classes

(Course dates subject to change)

Advancing Environmental Solutions

ITRC 2-DAY CLASSROOM TRAINING

Petroleum Vapor Intrusion: Fundamentals of Screening, Investigation, and Management

Save the Date: Oct. 10-11, 2018, Seattle (area), Washington

Registration expected to open by May 15 at: www.itrcweb.org/training.

Sponsor opportunities are available. Contact us at training@itrcweb.org or 402-201-2419 to learn more.



ITRC ONLINE TRAINING CLASSES

Registration: <http://www.clu-in.org/live/> **Cost:** Sponsored by ITRC and EPA at no cost for the participant.
Associated Guidance: <http://www.itrcweb.org/Guidance> **More Information:** <http://www.itrcweb.org/training>
If you have questions after completing the online registration, call us at (402) 201-2419 or send an e-mail to training@itrcweb.org. **NOTE: Course dates and times are subject to change.**

2018 Date / Time (EASTERN)	ITRC Training Topic
January 9 (Tuesday) 1pm - 3:15pm EASTERN	Remedy Selection for Contaminated Sediments
January 11 (Thursday) 1pm - 3:15pm EASTERN	Long-term Contaminant Management Using Institutional Controls
January 23 (Tuesday) 1pm - 3:15pm EASTERN	Groundwater Statistics for Environmental Project Managers
January 25 (Thursday) 1pm - 3:15pm EASTERN	Petroleum Vapor Intrusion: Fundamentals of Screening, Investigation, and Management
January 30 (Tuesday) 1pm - 3:15pm EASTERN	Geospatial Analysis for Optimization at Environmental Sites
February 1 (Thursday) 1pm - 3:15pm EASTERN	Issues and Options in Human Health Risk Assessment – A Resource When Alternatives to Default Parameters and Scenarios are Proposed
February 6 (Tuesday) 1pm - 3:15pm EASTERN	Remediation Management of Complex Sites
February 13 (Tuesday) 1pm - 3:15pm EASTERN	Bioavailability of Contaminants in Soil: Considerations for Human Health Risk Assessment
February 22 (Thursday) 1pm - 3:15pm EASTERN	Characterization and Remediation in Fractured Rock
March 8 (Thursday) 1pm - 3:15pm EASTERN	Integrated DNAPL Site Characterization
March 22 (Thursday) 1pm - 3:15pm EASTERN	Geophysical Classification for Munitions Response
March 27 (Tuesday) 1pm - 3:15pm EASTERN	Groundwater Statistics for Environmental Project Managers
March 29 (Thursday) 1pm - 3:15pm EASTERN	Geospatial Analysis for Optimization at Environmental Sites
April 5 (Thursday) 1pm - 3:15pm EASTERN	Petroleum Vapor Intrusion: Fundamentals of Screening, Investigation, and Management
April 10 (Tuesday) 1pm - 3:15pm EASTERN	Long-term Contaminant Management Using Institutional Controls
April 26 (Thursday) 1pm - 3:15pm EASTERN	Remediation Management of Complex Sites

(Upcoming Events continued from page 48)

2018 Date / Time (EASTERN)	ITRC Training Topic
May 3 (Thursday) 1pm - 3:15pm EASTERN	Bioavailability of Contaminants in Soil: Considerations for Human Health Risk Assessment
May 8 (Tuesday) 1pm - 3:15pm EASTERN	Connecting the Science to Managing LNAPL Sites Part 1: Understanding LNAPL Behavior in the Subsurface
May 15 (Tuesday) 1pm - 3:15pm EASTERN	Connecting the Science to Managing LNAPL Sites Part 2: LNAPL Conceptual Site Models and the LNAPL Decision Process
May 17 (Thursday) 1pm - 3:15pm EASTERN	Characterization and Remediation in Fractured Rock
May 22 (Tuesday) 1pm - 3:15pm EASTERN	Connecting the Science to Managing LNAPL Sites Part 3: Using LNAPL Science, the LCSM, and LNAPL Goals to Select an LNAPL Remedial Technology
June 19 (Tuesday) 1pm - 3:15pm EASTERN	Geospatial Analysis for Optimization at Environmental Sites
July 19 (Thursday) 1pm - 3:15pm EASTERN	Remediation Management of Complex Sites
August 14 (Tuesday) 1pm - 3:15pm EASTERN	Long-term Contaminant Management Using Institutional Controls
August 16 (Thursday) 1pm - 3:15pm EASTERN	Bioavailability of Contaminants in Soil: Considerations for Human Health Risk Assessment
September 11 (Tuesday) 1pm - 3:15pm EASTERN	Characterization and Remediation in Fractured Rock
September 13 (Thursday) 1pm - 3:15pm EASTERN	Groundwater Statistics for Environmental Project Managers
September 18 (Tuesday) 1pm - 3:15pm EASTERN	Quality Considerations for Multiple Aspects of Munitions Response Sites
September 20 (Thursday) 1pm - 3:15pm EASTERN	Geospatial Analysis for Optimization at Environmental Sites
September 25 (Tuesday) 1pm - 3:15pm EASTERN	Petroleum Vapor Intrusion: Fundamentals of Screening, Investigation, and Management
October 2 (Tuesday) 1pm - 3:15pm EASTERN	Integrated DNAPL Site Characterization
October 23 (Tuesday) 1pm - 3:15pm EASTERN	Remediation Management of Complex Sites
October 25 (Thursday) 1pm - 3:15pm EASTERN	Issues and Options in Human Health Risk Assessment – A Resource When Alternatives to Default Parameters and Scenarios are Proposed
October 30 (Tuesday) 1pm - 3:15pm EASTERN	Connecting the Science to Managing LNAPL Sites Part 1: Understanding LNAPL Behavior in the Subsurface
November 6 (Tuesday) 1pm - 3:15pm EASTERN	Connecting the Science to Managing LNAPL Sites Part 2: LNAPL Conceptual Site Models and the LNAPL Decision Process
November 13 (Tuesday) 1pm - 3:15pm EASTERN	Connecting the Science to Managing LNAPL Sites Part 3: Using LNAPL Science, the LCSM, and LNAPL Goals to Select an LNAPL Remedial Technology
November 15 (Thursday) 1pm - 3:15pm EASTERN	Quality Considerations for Multiple Aspects of Munitions Response Sites
November 27 (Tuesday) 1pm - 3:15pm EASTERN	Bioavailability of Contaminants in Soil: Considerations for Human Health Risk Assessment
November 29 (Thursday) 1pm - 3:15pm EASTERN	Long-term Contaminant Management Using Institutional Controls
December 4 (Tuesday) 1pm - 3:15pm EASTERN	Characterization and Remediation in Fractured Rock

Course registration opens at www.itrcweb.org four to six weeks prior to the course offering

(End)

Granite Quarrying in Vermont: Rock of Ages Corporation

Rock of Ages Corporation is a granite quarrying and finishing company located in Graniteville, Vermont. It was founded in 1885.

The company employs around 230 people, and made a profit of around \$800,000 in 2009 on revenues of \$21.6 million, up from a loss of more than \$2 million in 2008. ^[1]

On 19 October 2010, Swenson Granite, based in Concord, New Hampshire, announced that it and Rock of Ages had agreed to merge. ^[1] Swenson paid Rock of Ages shareholders a total of \$39 million. ^[1]

On 16 September 2016, Polycor Inc., of Quebec City, Quebec, Canada -a natural stone producer, announced the acquisition of Swenson Granite and Rock of Ages Corporation ^{[2][3][4][5]} to become the largest producer of marble and granite in North America.^[6] This also includes the Canadian division of Rock of Ages Corporation, located in Stanstead, Quebec, along the Vermont and Quebec border.

ROAC maintains the world's largest "deep hole" granite quarry. ^{[7][8][9][10][11]} The quarry is called the "E. L. Smith Quarry", and the Devonian Barre Granite is mined there. Granite was originally quarried using primitive techniques which implemented hand saws and explosive charges to blast away the "benches" of the quarry. Modern techniques have evolved to include diamond-tipped wire saws and water jets. Visitors to the Rock of Ages factory and gift shop can also watch quarriers in the quarry cutting the granite away from the quarry wall. ^[12]

The company was one of the cemetery-related businesses profiled in the 2005 PBS documentary A Cemetery Special ^[13]

(Granite Quarrying continued on page 51)

(Granite Quarrying continued from page 50)



LEFT: Rock of Ages granite quarry, viewed from an observation platform during a factory tour.

BELOW:
Rock of Ages
panorama



1. "Swenson Granite to buy Rock of Ages in cash deal for \$39 million". Vermont Business Magazine. 9 October 2010. Retrieved 20 October 2010.
2. "Polycor acquires and merges with Swenson Granite and Rock of Ages". www.prnewswire.com. Retrieved 2017-02-02.
3. "Rock of Ages company sold". Burlington Free Press. Retrieved 2017-02-02.
4. "Canadian Company buys Vermont-based Rock of Ages, NH-based Swenson,". AP News. Retrieved 2017-02-02.
5. Times Argus Online. "Rock of Ages sold to Canadian company". webcache.googleusercontent.com. Times Argus Online. Retrieved 2017-02-02.
6. "Marble and granite producer Polycor in Quebec purchases US rivals". PLANT. 2016-09-19. Retrieved 2017-02-02.
7. RoadsideAmerica.com
8. Central-VT.com
9. Vermonter.com
10. LinkVermont.com
11. VermontGuides.com
12. Tours and Activities | Rock of Ages Corporation. Rockofages.com. Retrieved on 2014-04-12.
13. PBS.org

Copied content from https://en.wikipedia.org/wiki/Rock_of_Ages_Corporation; see that page's history for attribution.

(End)

OCTOBER 2018 MEETING MINUTES

**NE SECTION – AIPG
EXECUTIVE COMMITTEE MEETING
FRIDAY OCTOBER 19, 2018**

Dudley H. Davis Center, Livak Ballroom
University of Vermont
590 Main Street, Burlington, VT 05405

Distribution:

Call to Order (4:28 PM)

Jessica McEachern	Michael Grifasi	Bob Blauvelt
Jeff Frederick	Adelina Prentice	Wendy Davidson
Luanne Whitbeck	Kelly Weyer	Cathy Duran
Dennis McGrath	Jennifer Becker	

Secretary’s Report- Minutes prepared by Jennifer Becker. The September 2018 meeting minutes were reviewed and minor edits recommended. A motion was made and seconded and the September 2018 minutes were approved with minor revisions.

Treasurer’s Report- The NE Section budget is currently in good standing. The September treasurer’s report includes fall meeting registration and sponsorship deposits. Payables to the fund include bank card, star chapter fees, and the meeting venue. A motion was made, and seconded, to file the August and September 2018 treasurer’s report. Projections following the Fall Meeting will increase revenue from advertisers and sponsors to make a healthy contribution to the ATMGS. Thank you to all advertisers for sponsoring the Fall meeting. Bob provided all necessary paperwork to Wells Fargo and will provide an update next meeting regarding the continued process.

Correspondence: Student Chapter Updates

Brooklyn College – Jennifer has been in contact with the geology club president who is currently registering student board members as AIPG members. Dennis and Jennifer will coordinate an on-campus visit for a Wednesday during the fall semester.

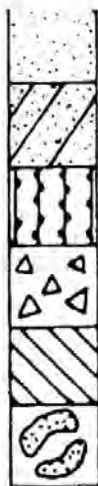
SUNY Geneseo/Binghamton – There are no new updates with these student chapters.

(October Minutes continued on page 66)

CARL VERNICK, P.E.
President

SOIL MECHANICS DRILLING CORP.

3770 MERRICK ROAD • SEAFORD, L.I., NEW YORK 11783
(516) 221-2333



Test
Borings

3770 Merrick Road
Seaford, New York 11783
Phone (516) 221 - 7500
Fax (516) 221 - 0254

SOIL MECHANICS

Environmental Site Assessments
Geoprobe Environmental Sampling
Inspection-Testing-Drilling

Carl Vernick P.E.
President

GET TO THE SOURCE... THE FIRST TIME!



with Horizontal Remediation Wells

Some of the benefits:

- No business interruption during installation
- Maximum exposure to contaminants
- Cost efficient
- Reduced maintenance equipment, and operations cost.

And a few of the applications are:

- Horizontal Air Sparging
- Horizontal Soil Vapor Extraction
- Horizontal Bio Remediation
- Horizontal Soil Sampling
- Chemical Oxidation
- And many more...

DIRECTIONAL
Technologies, Inc
Horizontal Directional Drilling Services

203.294.9200

www.directionaltech.com | Email: ksequino@directionaltech.com

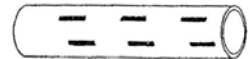
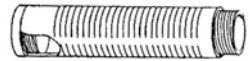
Support Our Advertisers and Sponsors!

The Executive Committee reminds all our members to support the companies that advertise in this Newsletter and generously sponsor our meetings. Their support represents a major contribution that helps the Northeast Section continue its mission to promote the profession and build the cornerstone of our Section, the *Angelo Tagliacozzo Memorial Geological Scholarship Perpetual Trust Fund*. It is our advertisers and sponsors who make our Newsletter so successful and well-distributed, reaching more than 700 members across eight states.

Please let our advertisers and sponsors know that you appreciate them by working with these companies whenever possible. Be sure to personally acknowledge their support when you speak with their representatives, and that you saw their ad or sponsorship in our Newsletter. *Thank you to all our advertisers and sponsors!*



- Well Rehab. Products
- Manholes
- Bentonite
- Filter Sock
- Inline Chemical Mixers
- Sampling Bailleurs
- Clear PVC Pipe
- Locking Caps



Manufacturers of Slotted & Perforated Pipe
ranging from 1/2" to 24" in diameter

302-684-3197

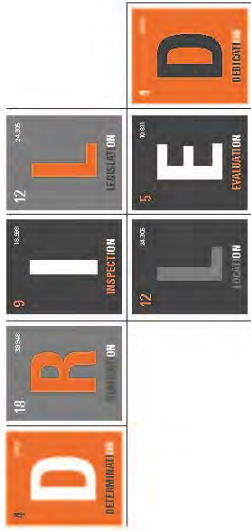
FAX 302-684-0643

142 Broadkill Rd. • Milton, DE 19968

www.atlantic-screen.com

email: atlantic@ce.net

© SGS North America Inc. - 2014 - All rights reserved - SGS is a registered trademark of SGS Group Management SA.



THE TRUSTED LEADER IN ENVIRONMENTAL DRILLING SERVICES

Since 1985, SGS has helped set the standards of excellence in our industry.

SGS is the world's leading inspection, verification, testing and certification company.

SGS ENVIRONMENTAL DRILLING

Brian McGuire, General Manager

t: +1 800 962 7327

us.envdrilling@sgs.com

www.us.sgs.com/drilling

WHEN YOU NEED TO BE SURE

SGS

Fast & Accurate Surface and Borehole Geophysics

Acoustic & Optical Televiwer Logging

Borehole Video & Geophysical Logging

Multi-Electrode Resistivity Imaging

Seismic Refraction & Reflection

Radar, Magnetics, EM & VLF

Do
More
than
Scratch
the
Surface...

G E O P H Y S I C A L A P P L I C A T I O N S

I N C O R P O R A T E D

Holliston, MA • 508-429-2430

Ask about our geophysical instrument rentals



An Environmental Consulting
& Remediation Firm

Timely Response. Time-Proven Solutions.

- Guaranteed Fixed-Price Remediation
- Environmental Due Diligence
- Regulatory Compliance
- Litigation Experts and Environmental Forensics
- Indoor Air Quality

Parsippany, NJ
Hamilton, NJ
New York, NY

Call the experts at EWMA to assist with
your environmental questions.
(800) 969-3159
www.ewma.com



Two Companies have Joined Forces!



ENVIRENT
corporation

**Environmental
RENTAL**

**FREE
DELIVERY**
on rental
orders in
North Jersey

- PID'S
- Water meters
- Dust meters
- Bailers and
much more....

**Now bigger and better
with expanded capabilities
for all your equipment needs
while still providing the same
great personal service you expect.**

10% OFF
your first rental
with postcard

(800) 446-8736 and (800) 219-7368

www.environmentalrental.com

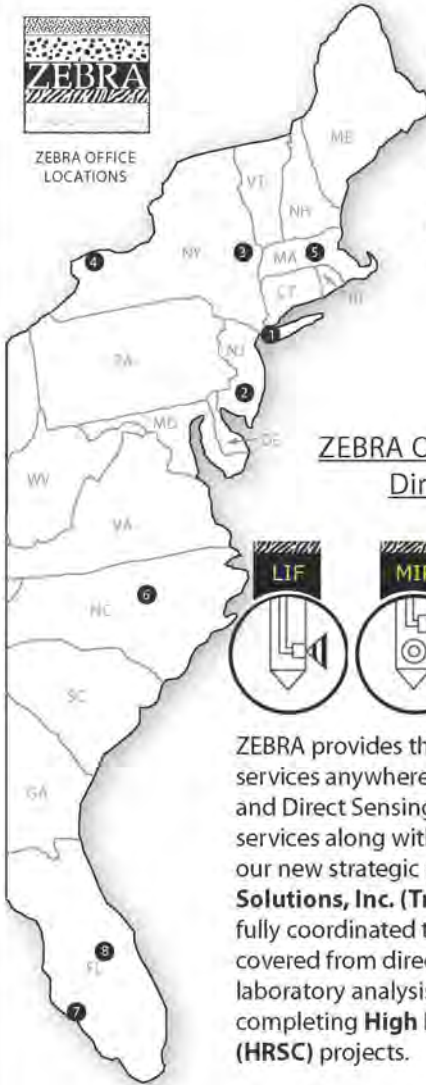
www.envirent.com

ZEBRA Environmental Corp.

Providing Subsurface Sampling, Injection and Data Collection
for Environmental Professionals Since 1992



ZEBRA OFFICE
LOCATIONS



Headquarters:
NYC, NJ &
Southern
CT Area

1 LYNBROOK, NY
516-596-6300

2 JACKSON, NJ
732-275-8333

Upstate NY &
New England

3 ALBANY, NY
518-355-2201

4 NIAGARA FALLS, NY
716-297-6567

5 UXBRIDGE, MA
508-581-9880

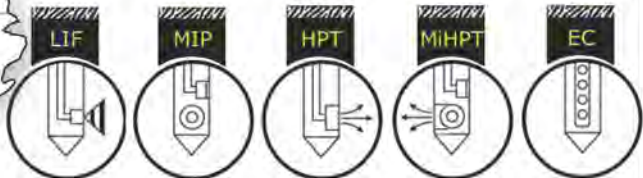
Southeast
Region

6 CARY, NC
813-626-1717

7 TAMPA, FL
813-626-1717

8 Orlando, FL
813-626-1717

ZEBRA Offers The Widest Range of Direct Sensing Services:



ZEBRA provides the widest range of Geoprobe/ DPT services anywhere, including a toolbox full of Injection and Direct Sensing systems. ZEBRA is now offering **UVOST** services along with **EC, MIP, MiHPT, CPT, MIP/CPT**. With our new strategic partnership with **TRIAD Environmental Solutions, Inc. (TriadES)** we are able to offer our clients a fully coordinated team of professionals. We have you covered from direct sensing to quantitative on-site laboratory analysis with DPT operators experienced in completing **High Resolution Sites Characterization (HRSC)** projects.

1-800-PROBE-IT

WWW.TEAMZEBRA.COM



HAGER GEOSCIENCE, INC.

Innovative solutions to Subsurface Problems

Celebrating 26 Years of Geophysical Consulting Services for Engineering, Environmental, and Infrastructure Projects

PH 1-781-935-8111

hgi@hagergeoscience.com

Jutta Hager, Ph.D., P.G., President
jhager@hagergeoscience.com

Your Full Color, Professional Business Card Ad could be Right Here, selling for you every day!

Just call Volunteer Advertising Manager Dick Young at 973-335-2289 or email RYoungNJ@aol.com

BOYD ARTESIAN WELL CO., INC.

We design, manufacture and install round holes!

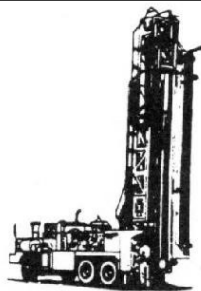
GEOHERMAL WELLS
WELL ABANDONMENT
ROTARY & PERCUSSION DRILLING
WELLS REPAIRED & DEEPENED
COMPLETE WATER SYSTEMS
HYDROGEOLOGICAL CONSULTING
MONITORING WELLS

SPLIT SPOON SAMPLING
EXPLORATORY DRILLING
HYDROFRACTURING
IRRIGATION WELLS
SPECIALTY DRILLING
GRAVEL WELLS
SITE ASSESSMENTS

CARMEL, NY

(800) 321-2693

WWW.BOYDARTESIANWELLCO.COM



MC ENVIRONMENTAL, LLC



Innovative Environmental Services & Consulting

- Hydrogeology
- Water Resources
- Regulation Compliance
- Monitoring Programs
- Instrumentation
- Site Assessments
- Site Assessments
- Remediation
- Property Transactions
- UST, Spill Response
- Expert Testimony

26 Railroad Avenue #182, Babylon, NY 11702-2216
Phone 631 321 4500 Fax 631 321 0190
mike@mc-environmental.net



- Brownfields Evaluation, Cleanup Negotiations and Remediation
- ASTM Phase I and II Real Estate Assessments
- Facility Operations Environmental Audits
- Permit Status/Compliance Review
- Single and Multiple Lot Septic System Design and Permitting
- Water Supply Siting, Analysis, and Permitting
- Federal, State, and Local Development Permitting
- Boundary Surveying, ALTA/ACSM Land Title Surveys, Construction Layout, Construction Inspection

163 Revell Drive, Lincoln, VT 05443
802-453-4384 * 802-453-5399 (Fax) * 800-477-4384
Email: lagvt@lagvt.com



AECOM

Imagine it. Delivered.

As a fully integrated firm, AECOM connects knowledge and experience across our network of experts to help solve our client's most complex challenges. From high-performance buildings and transit systems, to resilient communities and environments, our work is transformative, differentiated and vital.

aecom.com

Site & Subsurface
Investigations

Geotechnical &
Environmental
Site Investigations



SOILTESTING, INC.

- Test Boring - Core Drilling
- Monitoring Wells
- Micro Piles
- Helical Piers
- Underpinning

53 Years of Drilling Services

140 Oxford Road, Oxford, CT 06478

1-800-388-4473

(203) 888-4531

fax (203) 888-6247



EAI, Inc.

Environmental Management Services

Turnkey Solutions for Environmental Management



www.eaienviro.com



GRACE
Construction Products

CETCO

CARLISLE



AQUAFIN

Services:

- ➔ Vapor Barrier Installations
- ➔ Waterproofing
- ➔ Sub-slab Depressurization System Installation (SSDS)
- ➔ Venting/Monitoring System Installations
- ➔ Liquid Boot/GeoVent Installations
- ➔ Air Barrier Installations
- ➔ Tank Services
- ➔ Remediation
- ➔ Air Monitoring System Installations
- ➔ Asbestos/Lead Services
- ➔ Sandblasting
- ➔ Specialty Contracting Services

**Call EAI for All of Your
Environmental Needs**

50 Prescott Street
Jersey City, NJ 07304

Tel: (201) 395-0010

inforequest@eaienviro.com



NAEVA GEOPHYSICS INC.

THE LEADER IN SUBSURFACE DETECTION

Subsurface Geophysical Surveys

- Magnetics
- Electromagnetics
- Ground Penetrating Radar
- Seismic Application
- Utility Location
- UXO Detection
- Borehole Logging
- Dowhole Camera
- Self Potential
- Resistivity
- Sewer Inspection Camera

VIRGINIA

P.O. Box 7325

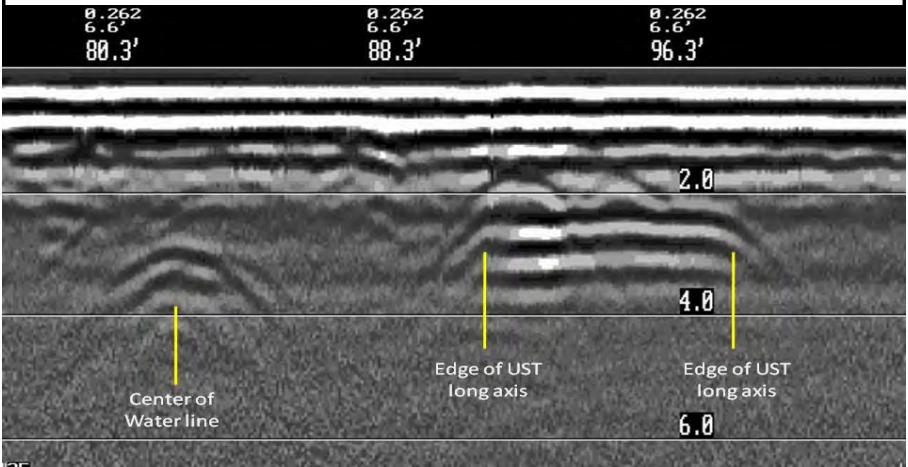
Charlottesville, VA 22906

434-978-3187

434-973-9791 fax

staffva@naevageophysics.com

<http://www.naevageophysics.com>





"We look into the earth"

PENNSYLVANIA DRILLING

FOUNDATION TESTING	INCORPORATED 1900
MONITORING WELLS	
DAM DRILLING	281 ROUTE 30
ENVIRONMENTAL WORK	IMPERIAL, PA 15126
"PENNDRILL" DRILLING SUPPLIES	PHONE 724-695-2400
MONITORING WELL SUPPLIES &	FAX 724-695-2455
MANUFACTURING	800-245-4420

www.pennsylvaniadrillingco.com

LITTLE THINGS YOU CAN DO

What's going on out there? Let your colleagues know what you are working on, your new position, or a new company.

Simply e-mail a paragraph or more to: btufano@rouxinc.com

Become active in your section. Attend one of our Spring **or** Fall meetings.

For details, simply e-mail geode78@verizon.net

Join our **Executive Committee**. We always have **openings for creative, committed Geologists who want to make a difference, . . .** and not much is asked of your time.

Think about putting it on your resume!

For more info, simply e-mail geode78@verizon.net or jfrederick@louisberger.com

- Since 1886 -

SAMUEL STOTHOFF CO., INC.

Flemington, NJ

WATER AND MONITORING WELL DRILLING
ROTARY -AUGER-CORE-PROBE RIG
DOWN HOLE VIDEO INSPECTION SERVICES
HYDROFRACTURING & WELL REDEVELOPMENT
7 PUMP SERVICE TRUCKS AND INVENTORY OF 400 PUMPS

Dick Stothoff
FAX: 908-782-9528

David Lyman
Phone: 908-782-2116



50 Gear Ave
Lindenhurst, NY 11757



Phone: (631) 979-2890
Fax: (631) 979-2891
Email: locator@optonline.net
Web: www.x-raylocating.com

We offer:

- Line Locating
- Ground Penetrating Radar (GPR)
- Video Pipe Inspection (*DVD supplied*)
- Digital Mapping/Reports
- Fault Locating

Short notice? No problem.
Call us and we'll work with you.

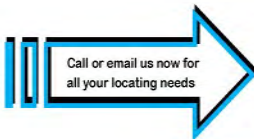
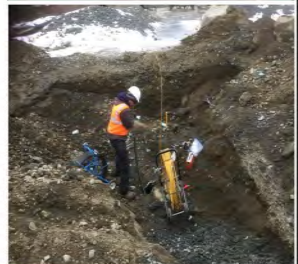
We work on commercial, residential, industrial and government properties

We find buried:

- Electric and Communication cables
- Water and Gas lines
- Sewer and Drainage pipes
- Metallic/Non-metallic pipes
- Tanks
- Cesspools/Drywells
- Manhole Covers
- Valves
- Pull-Boxes/Splice Boxes

Our employees are professional, courteous and accommodating

Visit our website
www.x-raylocating.com
and fill out our
Mark-out Request Form



New Paltz- Chris Brown updated the ExCom that the field trip scheduled for 10/18/18 to a local remediation site was canceled due to low student participation. The field trip will be rescheduled after mid-terms later in the Fall. The student resume workshop Chris hosted in September was successful and well attended.

Publication-

Newsletter/Advertising Sales Update & Income- Dick Young and Brandon Tufano were unable to attend the meeting and an update will be provided to the ExCom at the next meeting.

Old Business

AT Scholarship - Online Application Host Updates- The website portal is currently accepting ATMGS applications until the early December 2018 deadline. Dennis has received one faculty recommendation from Brooklyn College. Upgrades to the application process will be monitored for efficiency and issues encountered going forward.

Spring Meeting- The NYS Counsel supports a joint 2019 spring meeting with the NE Section. Cheryl updated the section that they are considering hosting the event at a winery in the lower Hudson Valley. It was suggested that any sponsors from the spring meeting could receive a platinum level sponsorship for the National meeting at a reduced rate.

New Business

2019 Annual Meeting, Burlington, VT (See additional handout)- Wendy and Cathy provided an overview of the planning stages for the 2019 AIPG National Meeting in Burlington, VT. In the next month the Northeast Section will finalize a theme for the meeting, establish a planning committee, and review a draft schedule that National will provide. The Northeast Section will begin scheduling national planning meetings separate from the bimonthly calls and provide updates to Cathy and Wendy in the coming weeks.

Adjournment (5:40 PM) A motion was made to adjourn to setup the field demonstrations and seconded with no discussion. Motion for adjournment passed and the meeting adjourned.

DECEMBER 2018 MEETING MINUTES

NE SECTION – AIPG EXECUTIVE COMMITTEE MEETING MONDAY DECEMBER 10, 2018

Distribution:

Call to Order (4:03 PM)

Jessica McEachern	Michael Grifasi	Bob Blauvelt
Jeff Frederick	Brandon Tufano	Luanne Whitbeck
Jennifer Becker	Chris Brown	Adelina Prentice
Dennis McGrath	Dick Young	Kelly Weyer

Secretary's Report: Minutes were prepared by Jennifer Becker. The October 2018 meeting minutes were reviewed and minor edits recommended. A motion was made and seconded to approve the October 2018 minutes with minor revisions.

Treasurer's Report: The status of the ATMGS fund was reviewed and it was indicated that the fund has a similar balance to the beginning of the year primarily due to market fluctuations in 2018. The Section fund included the bank card and star chapter fees, a few payables, and no deposits. Dick Young highlighted that the end of the year invoicing to advertisers has been circulated and those funds will be incorporated in the coming months to the Section fund. This year we have received a record number of applications which allows for three options to fund the scholarships including drawing money from the ATMGS fund principle, utilizing funds from the Section account, or drawing funds from both accounts. A motion made to accept the October and November 2017 Treasurer's Reports and approved.

Correspondence:

Student Chapter Updates:
Brooklyn College-

(December Minutes continued on page 68)

Dennis McGrath and Jennifer Becker visited the Brooklyn Campus in the first week of December to meet with the student representatives. The group is very enthusiastic at the opportunity of becoming a graduate NE Section student chapter, and eager to participate in the 2019 academic year. Following the winter break they will create a list of activities including a career panel and attendance to the Spring Meeting.

SUNY Binghamton- There are no new updates to provide. Brandon will reach out following the holiday break.

Scholarship Updates: Dennis McGrath provided the ExCom with faculty feedback from the 2018 scholarship process. This year there were a record number of scholarship applications with the new submission format. “Best scholarship program I know of- it is an honor to nominate great students with financial needs”- Tim Lowenstein SUNY Binghamton. “Thank you for your support for Earth Science students. I know from experience that your generosity makes a real difference for these students”-Alice Kelly University of Maine.

Old Business:

ATGMS Scholarship – Dennis McGrath has received 23 complete applications and 3 incomplete through the online portal. The increased applicant participation in 2018 could potentially be attributed to the new electronic format and ease of use. The Survey Monkey platform has been extremely successful and will continue to be utilized for the ATGMS scholarship program. The way the platform is formatted if the student is provided with the official transcripts and the faculty letter all supplemental documents can be sent electronically through Survey Monkey. Dennis will compile the individual student pdf files prior to the holidays, and send them to the committee for review.

New Business

o Results of NE Section Elections – Votes are in the NE AIPG section would like to welcome new members to the ExCom Kelly Weyer as a member at large, and Adelina Prentise as the NE AIPG Secretary. We would also like to congratulate Jeff Fredrick and Luanne Whitbeck as members at large, Jennifer Becker as

(December Minutes continued from page 68)

President Elect, and Michael Grifasi as the new NE Section President. The NE AIPG would like to thank Jessica McEachern for all her hard work and service as the President these past two years!

o NE Section 2019 Budget- Bob Blauvelt requested that any specific project funding requests be made at this time so he can include them in the 2019 NE Section Budget. He will compile everything in the next month or so if there are costs related to supporting student chapters or other events please contact Bob.

o 2019 Annual Meeting, Burlington, VT – Updates: National accepted the 2019 National Meeting theme, “*Geology in the Green Mountains: Scenic Beauty and Economic Engine.*” The call for abstracts was sent out to the membership and feedback is currently being provided as well as field trip suggestions. The Section advertisers and profit sharing was discussed. It was suggested the NE Section get additional information regarding the profit sharing and revisit in the January ExCom meeting.

o National AIPG Board – Is there interest in the NE Section to serve? The NE AIPG is one of the largest sections and if anyone is interested in participating on the National AIPG Board please contact Jeff Fredrick. The term of service would begin in 2019 and 2020.

o 2019 Meeting Schedule- The dates for NE Section meetings are set for January 7th, March 11th, May 13th (Spring Meeting), July 8th, September 16th (National Meeting), October 17th (Debriefing the National Meeting), and December 9th. It was discussed that the Spring Meeting date may move depending on the NYS Council schedule to host the joint meeting. There was a recommendation to set a firm date for the September 2019 the Ex-Com meeting once there are more details regarding the National Meeting schedule.

Publications:

Newsletter Schedule: Brandon Tufano is currently compiling the content for the Indian summer and Holiday editions of the newsletter.

(December Minutes continued on page 70)

It was noted that additional content is needed for forthcoming newsletters including updates to the “News of Members” section. Jessica McEachern volunteered to provide the Fall Meeting field trip summary for the Holiday edition. The 2019 publication schedule was finalized and will be published in the Holiday newsletter.

See page 83 of this, the Winter 2019 Newsletter, for the publication schedule.

Advertising Sales Update & Income- Dick Young requested contact information for companies that currently aren’t advertising in the newsletter but would benefit from doing so. Invoices will be mailed out in the coming weeks to allow advertisers to include the costs in their year end budgets.

Adjournment (5:45 PM) A motion was made and seconded with no discussion. Motion for adjournment passed and the meeting adjourned.

(End)



GEOSPHERE
ENVIRONMENTAL MANAGEMENT INC.

NEW HAMPSHIRE	GROUNDWATER SUPPLY
MASSACHUSETTS	SITE ASSESSMENTS
(603)-773-0075	LSP SERVICES
(888)-838-6571	GEOTHERMAL
WWW.GEOSPHERENH.COM	WETLANDS

**PROFESSIONAL CONSULTANTS PROVIDING
GROUNDWATER & ENVIRONMENTAL SOLUTIONS**

When In Vermont, Part 1

By Mike Grifasi

With the AIPG National Conference nearly seven months away, let's talk about some of the finer things Vermont has to offer ... other than thrusts of course. Opening their doors in 2016, Foam Brewers is a relatively new brewery in Burlington. Located on Lake Street, this little place is a stone's throw from Lake Champlain which means you get great views with your beers! Aside from their lovely beers, I really enjoy the names they give them. Having a special place in my heart for all things Indie, they've named beers after Pavement, Sonic Youth ("Experimental Jet Set"), Yo La Tengo ("Autumn Sweater"), Beat Happening, Black Flag (that's more punk than Indie), Built to Spill, Modest Mouse ("Interstate 8"), Guided by Voices, and so many more.

The beer I'm thinking of today is a delicious double IPA (DIPA) named "Think I'm in Love" which is really how you feel as you drink this 8% ABV tropical bit of goodness. Like any good New England IPA (NEIPA), this beer pours cloudy and floral. That first sip is viscous and tastes of papaya and orange juice. The term folks use these days for NEIPAs is usually "juicy" or some variant. And it is every bit juicy. Sometimes, when drinking these beers, I feel like it's Sunday brunch and I'm drinking a mimosa. It really is quite wonderful.

Photo credit—Mike Grifasi



I should say, if juicy, hazy IPAs are not in your wheelhouse, they make some great sours and farmhouse ales as well.

If you're on the fence about making it out to Burlington this September, think of Foam. And if you make it to the conference, come find me and we'll head down to Foam and have a beer or two.



- > environmental engineering
- > site assessments & remediation
- > environmental investigations
- > environmental services related to real estate transactions
- > storage tank management
- > hydrogeology/groundwater modeling
- > cost recovery litigation support
- > expert testimony
- > brownfields



**Mott
MacDonald**

Delivering Solutions

*headquarters: Iselin, NJ
offices across North America*

800.832.3272

www.hatchmott.com



Environmental laboratory solutions provided for your most demanding applications.

The 6th largest environmental testing laboratory in the United States and the largest privately family owned laboratory in the country with more than 50,000 square feet of state-of-the-art laboratory facilities offering:



Air



Sediment & Tissue



Forensic Petroleum



Regulatory Soil



Regulatory Water



Emerging Contaminants

For more information please contact us at 800-624-9220
info@alphalab.com
www.alphalab.com

Westborough, MA | Mansfield, MA | Brewer, ME | Portsmouth, NH
Mahwah, NJ | Albany, NY | Buffalo, NY | Rochester, NY | Syracuse, NY | Holmes, PA



Experience Sonic

When it comes to unconsolidated formations, there is no better technology than Sonic. With drill speeds up to 4 times faster and as much as 80% less waste, environmental consultants are realizing significant results and value. Benefit from clear and undisturbed samples in overburden, sand, gravel, clay, cobbles, boulders, bedrock, and delicate formations.

Also consider that cutting-edge technology is only part of the story. **Summit Drilling's Sonic Division** has invested in the best people the industry has to offer. Our new sonic rigs are operated by highly skilled and specially trained drillers who deliver unmatched sample quality and efficiency in the field. *More importantly*, sonic represents the safest drilling technology to date. At Summit Drilling, safety is more than training. It's our company culture.

Experience Sonic at An Exceptional Level. Call Summit Drilling and Speak with a Sonic Expert Today.

*Now Open! Our Albany, NY Office
Serving NY, CT & MA*

www.summitdrilling.com



800-242-6648



Professional Geologic and Hydrogeologic Consulting

679 Plank Road, Clifton Park, NY 12065

www.alphageoscience.com

Mining Services

Hydrogeologic Investigation

- . Impacts to surface and ground water
- . Potential impacts from mine inflows
- . Mitigation of mine inflows

Mineral Resources

- . Resource and Reserve Analyses
- . Aggregates, Sand, and Gravel
- . Industrial Minerals, Metals and Salt
- . Permitting

Independent Laboratory Data Validation

Emergent Contaminants

- . PFOS, PFOA, and other PFAS
- . 1,4-dioxane

Quality Assurance/Quality Control

- . Validation of soil, water, and air data
- . Preparation of SOPs, QAPPs, and EDDs

Contact: John Nadeau, PG, CPG

jnadeau@alphageoscience.com



COMPLETE ENVIRONMENTAL TESTING, INC.

Contact Robert Blake
Technical Sales Representative

80 Lupes Drive
Stratford, CT 06615

Tel (203) 377-9984
Fax (203) 377-9952
E-mail: rblake@cetlabs.com
www.cetlabs.com

Serving Southern New England and Eastern New York

Connecticut Test Borings, LLC

Geotechnical and Environmental Drilling

- ◆ Hollow Stem Auger Drilling
- ◆ Soil Sampling - Rock Coring
- ◆ Monitor Well Installations
- ◆ Direct Push (Geoprobe®) Sampling



www.connecticuttestborings.com • 203-888-3857 • fax 203-888-0655 • ctblc@sbcglobal.net



Reliable.

Convenient Responsive Innovative

Your business objectives are our top priority. We deliver information on time so you avoid delays, surprises and costly mistakes down the road. For projects large and small, single- or multi-site, you can rely on consistent results nationwide.



Manchester, NH [603] 647 9700
Offices Nationwide terracon.com

Terracon

Geotechnical ■ Environmental ■ Construction Materials ■ Facilities

50 Years of Environmental Solutions in New Jersey

- Ground Water Investigation and Remediation
- Soil Investigation and Remediation
- Ground Water Supply Development
- Underground Storage Tank Investigation
- ISRA Compliance
- Environmental Site Inspections and Audits
- Brownfields Investigation and Permits
- Litigation Support and Expert Testimony
- LSRP Services



41 Spring Street, Suite 102
New Providence, NJ 07974
T: 908.988.1700 F: 908.464.3712
www.trcsolutions.com

GEI provides geotechnical, environmental, water resources and ecological consulting and engineering services. We provide these services from planning and design through construction and operations. Our clients include government agencies, institutions, industries, developers, utilities and professional service firms.



For more information
contact Bob Blauvelt at
973.873.7127
www.geiconsultants.com

GEI Consultants, Inc.
300 Broadacres Drive, Suite 100
Bloomfield, NJ 07003



FPM Remediations, Inc.

ENVIRONMENTAL CONSULTING REMEDIATION & CONSTRUCTION SERVICES

FPM is a HubZone-certified, small business contractor with an outstanding 15-year track record. We specialize in closing sites regulated under CERCLA, RCRA, UST and state-equivalent regulatory programs. Our geologists, engineers, environmental scientists, technicians and operators are well proven.

- ◆ SITE INVESTIGATION
- ◆ REMEDIAL TECHNOLOGY EVALUATIONS
- ◆ SITE REMEDIATION
- ◆ ENVIRONMENTAL CONSTRUCTION
- ◆ LONG-TERM MONITORING
- ◆ GEOPHYSICS AND UXO CLEARANCE/REMOVAL
- ◆ DESIGN-BUILD PROJECT MANAGEMENT
- ◆ EXPERT SERVICES

FPM's client list includes the Air Force, Department of Defense, U.S. Army, U.S. Army Corps of Engineers, Air National Guard and various private companies.

We have established and proven processes and procedures in place to ensure performance objectives, budgets, and schedules are met and the work is performed in a quality manner.

FOR MORE INFORMATION,

CONTACT MICHAEL GRIFASI, CPG, PG AT M.GRIFASI@FPM-REMIATIONS.COM



FPM has completed assignments at more than 490 sites throughout the United States

OFFICE LOCATIONS

- ⇒ ONEIDA, NEW YORK
- ⇒ SAN ANTONIO, TEXAS
- ⇒ ST. PETERSBURG, FLORIDA



(315) 336-7721

WWW.FPM-REMIATIONS.COM

The Stephen B Church Company

Ground Water Solutions Since 1886

Turbine Pumps

Pump Maintenance

Gravel Well Drilling

Well Rehabilitation

Ground Water Exploration

Well Video Inspection

Yield Testing

49 Great Hill Road Oxford CT 06478

Phone 203 888 2132 Fax 203 888 1863

stephenbch@aol.com

www.SBChurchCo.com

**Concerned about Site Remediation Budgets,
Timelines and Technology Performance?**



We can help.

- Scalable site remediation solutions for almost any budget
- Expertise and experience to meet timeline expectations
- Proven remediation technologies on over 20,000 sites worldwide
- Combined remedy approaches to maximize performance and cost savings

www.regenesisc.com
(949) 366-8000



*Providing Full Service Engineering, Planning and
Construction Expertise to Our Clients for Over 50 Years*

Imagine

What We Can Do for You!

CHA
www.chacompanies.com
800.836.0817

**ANGELO TAGLIACCOZZO MEMORIAL GEOLOGICAL
SCHOLARSHIP PERPETUAL TRUST FUND
LIST OF CONTRIBUTORS SINCE 1987**

(All Contributors, Since Fund Inception Through March 2018)

FRIENDS OF THE FUND
(\$1,000+)

AQUIFER DRILLING & TESTING,
INC.

BANINO, GEORGE

BLAUVELT, ROBERT P.

DIMMICK, CHARLES WM.

KASABACH, HAIG F.

LEGGETTE, BRASHEARS & GRA-
HAM, INC.

MCGRATH, DENNIS G.

NORTHEAST SECTION – AIPG

REXRODE, H. LEONARD, JR.

ROUX ASSOCIATES

ROUX, PAUL H.

SCHIFFMAN, ARNOLD

SLAYBACK, RUSSELL G.

VALKENBURG, NICHOLAS

YOUNG, RICHARD H.

TORY

ECORENTAL

GAVRAS, JOHN M.

GRAFF, CAROL S.

HARRINGTON, JONATHAN

KLEIMAN, AMY

MAHIER, LUKE

MILLER, DAVID W.

NEUBECK, WILLIAM S AND JEAN M.

NOVA CONSULTING & ENGINEER-
ING, LLC

PATOTA, JEAN M.

PVE SHEFFLER

RICH, CHARLES A.

RICHTER, DOROTHY

ROSENFELD, MORDECAI

SOILTESTING, INC.

WHITBECK, LUANNE AND DEAN

BENEFACTORS (\$500+)

CASCADE DRILLING, INC.

EMERSON, MARK

FPM REMEDIATIONS

FREDERICK, JEFFREY

HERRICK, DEAN H.

HIGGINS, JONATHAN B.

(IN MEMORY OF LEO HALL)

KAYLER, KYLE

MCEACHERN, MICHAEL

PROCE, CHRISTOPHER

STONE, TIMOTHY S.

PATRONS (\$250+)

AIRTAG SURVEYS, INC.

ALLEN, BOYD III

ALPHA ANALYTICAL

ANONYMOUS

BRINCKERHOFF, LAURA

(IN HONOR OF FRANK MCCAR-
THY)

BURKE, MICHAEL R.

CON-TEST ANALYTICAL LABORA-

SPONSORS (\$125+)

ALPHA GEOSCIENCE

BROWN, CHRISTOPHER

CHAMBERLAIN, JOHN MARK

CLEMENS, ROBERT H.

DEANGELIS, JAMES

EGGERS, J.

ERM – NORTHEAST

FAKUNDINY, ROBERT

GRAHAM, JACK B.

GREENMAN, MICHAEL

HEINDEL, CRAIG AND CHAVES, JU-
DITH

HINCE, ERIC

KOCH, ELLIS

KRAEMER, CURTIS A.

MATHEZ, MURIEL

PIERIBONI, JOHN

PREHODA, WILLIAM P.

SCHECHNER, CLAIRE AND LOUIS

SCHEUING, LAURIE

STANDISH, RICHARD

STEWART, ROBERT A.

TSACOYANNIS, NICHOLAS

URBAN-MEAD, RUSSELL B.

(Contributors continued on page 85)

(Contributors continued from page 81)

WASTE MANAGEMENT, INC.
(MATCHING GIFT ON BEHALF
OF GEORGE BANINO)

CONTRIBUTORS (\$50+)

ARGUDEN, A. TEFLIK
BARISH, JAMES M.
BECKER, ARTHUR E.
BELL, DAVID L.
BELT, EDWARD S.
BUGH, JAMES
DAVIS, R. LAURENCE
ENVIRONMENTAL COMPLIANCE,
INC.
(ON BEHALF OF JOSEPH TORLUCCI)
FLICK, WILLIAM
GALLAGHER, EVELYN A.
HANLON, KERRY
HERMAN KARPEL MEMORIAL
FUND
(ON BEHALF OF FRIENDS
OF RHODA TAGLIACOZZO)
HNOTTAVANGE-TELLEN, KEN
HOOPERHYDE, KEVIN J.
HOUSMAN, JOHN J., JR.
JONATHAN PAUL ASSOCIATES,
INC.
KACZOR, SOFIA
KETANI, RALPH
MASE, DAVID F.
MASLANSKY, STEVEN P.
MCEACHERN, JESSICA
MOZER, ROBERT
NEUBECK, WILLIAM S.
PENN, WILLIAM E.
RICE, JOHN
RHYNER, JOHN
RUSSO, LUIGI
RYAN, MICHAEL J.
SCOTT, DAVID
SHOPE, STEVEN
SILLMAN, ROBERT AND ROBERTA
SPARROW, LESLIE
ST. GERMAIN, DANIEL J.
STOKES, KURTIS W.
STONEHILL ENVIRONMENTAL,
INC.
TATLOCK, DEREK
TIMMONS, ROBERT

TORLUCCI, JOSEPH
TYERS, GEORGE
WARING, ANDREW D.
WENZ, KENNETH P.
WERLE, CRAIG
WEST, WILLIAM T.
WOHLFORD, THOMAS

DONORS (Up To \$50)

BABLIN, CHRISTOPHER
BARBOUR, RICHARD AND ROSE
BECKER, JENNIFER
BOWES, JAMES
BRADLEY, MARGARET
BUSA, MARK D.
CLAUSEN, JAY
COX, PETER
FALDETTA, SARAH
FOURNIER, LEROY
FREDRICK, WILLIAM T.
GANNETT FLEMING, INC.
HAGER, JUTTA
HARWOOD, DAVID G.
HERGERT, DAVID
HIXON, RICHARD A.
KING, DANIEL
KOWALSKI, RICHARD G.
ROSS, LAUREN AND SHELLEY
SASS, DANIEL B. (IN HONOR
OF K. E. CASTER)
SHAKTI CONSULTANTS
SINNOT, JOSEPH
SKEHAN, JAMES
SPEIDEL, DAVID
SUSCA, MICHAEL
VOZZA, SCOTT
WAYLAND, RUSSELL
WEINSTOCK, ERIC
WHERAN ENGINEERING

***Why Isn't Your Name
On This List?***

Solve it!

***Simply see Pg. 84 & 86 and
then***

Move into Action!

NE/AIPG 2019 PUBLICATION SCHEDULE

Winter Newsletter

January 11	Deadline (Material to Editor)
January 25	Content to Publisher
February 11	E-mail to Members

Directory of Members

February 11	Deadline (Material to Editor)
March 15	Content to Publisher
April 15	E-mail to Members

Spring Newsletter

March 22	Deadline (Material to Editor)
April 5	Content to Publisher
April 22	E-mail to Members

Indian Summer Newsletter

July 26	Deadline (Material to Editor)
August 16	Content to Publisher
September 3	E-mail to Members

Holidays Newsletter

October 11	Deadline (Material to Editor)
October 25	Content to Publisher
November 11	E-mail to Members

Please e-mail News, Info, & Articles to Brandon Tufano:

btufano@rouxinc.com

For Advertising Rates & Info, Please Contact Dick Young:

RYoungNJ@aol.com cell 203-627-8085

Celebrating 32 Years of Scholarships! **The Angelo Tagliacozzo Memorial Geological Scholarship**

The Angelo Tagliacozzo Memorial Geological Scholarship was established by the Northeast Section of the American Institute of Professional Geologists in late 1986. The first Scholarships were presented to undergraduate Geology students in 1987.

ATMGS recognizes the dedicated leadership and service which Angelo provided to NE/AIPG, to AIPG, and to the geological profession, until his untimely passing on October 11, 1986. The Scholarship furthers Angelo's goal of acquainting young geologists with AIPG and with AIPG's importance to the geological profession.

ANGELO TAGLIACOZZO (1936 - 1986)

Angelo Tagliacozzo received his doctorate in Geology from the University of Rome (Italy) in 1962. Thereafter, he worked in various positions as geologist, geophysicist, and hydrogeologist, which included assignments abroad, in the U.S., and with the United Nations. Angelo provided exemplary service to AIPG at the Section and National levels. He was a Northeast Section Executive Committee Member (1973-1982), Vice President (1977-1978), President (1979-1980), National Advisory Board Delegate (1981-1982), and Screening Board Chairman (1984-1986). Angelo's dedication to and leadership of the Northeast Section Screening Board has become the ultimate standard against which service in such a position is measured. Angelo also served as an AIPG National Executive Committeeman (1982); he was a vigorous advocate of measures to increase professionalism. Angelo was (and will be remembered as) a respected professional...and a friend.

THE SCHOLARSHIP

NE/AIPG grants Scholarships to undergraduate geology students annually. The Scholarships are designed to help with the cost of summer field courses, textbooks, and other aspects of geological education. Scholarships are awarded, both on academic achievement and on financial need, to students enrolled in recognized geology programs at colleges or universities in New England, New Jersey, & New York.

YOUR CONTRIBUTIONS

Your participation is encouraged in support of this dynamic memorial to Angelo and his recognition of the importance of AIPG to the geological profession. Contributions to the Scholarship Perpetual Trust Fund should be written to:

Angelo Tagliacozzo Memorial Geological Scholarship Trust Fund, and mailed to:

**NE/AIPG Geological Scholarship Trust Fund
c/o Dennis McGrath, CPG
P.O. Box 472
Hastings-on-Hudson, NY 10706-0472**

All Contributions are invested perpetually, with earnings thereon used solely for the Scholarship. NE/AIPG bears all costs of administration. Please ask your employer about Matching your contribution, and Additional corporate contributions.

For further information, contact Dennis McGrath:

mcgrathdg@gmail.com

Cell: 914-424-8816



LEGGETTE, BRASHEARS & GRAHAM, INC.

Professional Groundwater and Environmental Engineering Services



GROUNDWATER AND ENVIRONMENTAL ENGINEERING SERVICES

- UST, RCRA, CERCLA
- Remedial Design & Implementation
- Property Transfer Assessments
- Second Opinion Reviews
- Water Supply
- Water Rights
- Computer Modeling
- Expert Testimony

SHELTON, CT
203.929.8555

HARTFORD, CT
203.929.8555

RAMSEY, NJ
201.818.0700

WHITE PLAINS, NY
914.694.5711

Offices Nationwide | Toll Free 800.657.5885 | www.lbgwob.com



caRICH

ENVIRONMENTAL SPECIALISTS

Your Full-Service Environmental Expert Since 1982

- Brownfield Experts
- Environmental Due Diligence
- Remedial Action
- Ground Water
- SEQRA / CEQR Approvals
- Water Resource Management
- Regulatory Compliance
- Air Quality / Vapor Intrusion
- Construction Oversight
- Document and Peer Review
- Litigation Support
- Strategic Thinking

17 Dupont Street, Plainview, NY 11803 ■ Tel. 516.576.8844
Fax. 516.576.0093 ■ www.carichinc.com

Memorandum

To: Dennis McGrath, Chairman, ATMG Scholarship, Northeast Section, AIPG

From:

Date:

Re: *I'm Taking the Pledge: I'M IN FOR 2018!*

Dear Dennis,

Just a quick note to let you know that I'm 100% with you when it comes to achieving the Section's goal of 100% participation in support of the Scholarship Perpetual Trust Fund during 2019, the 32nd Anniversary of the Scholarship! I agree with your encouragement that each and every Section Member make a contribution in accordance with their ability ... And this is the one time when I don't want to be the odd person out!

I'M IN FOR 2018!

For 2018 the 32nd Anniversary, I'm considering pledging ... Thirty Bucks A Week, Thirty Bucks A Month, or Thirty Bucks for the year!

Now, I know that it could be more ... And you know that it could be less! But I am committed to contributing as much as I can, so I'm not going to delay it any longer: ***I'M IN FOR 2019***

Yes, my personal budget is tight, but I figure that, somehow, I can set aside \$30 each month (aka the cost of a daily latte) this year to give back to the profession that has given me so much. And I just wanted to tell you that I am delighted to know that every one of those hard-earned dollars that I contribute will be INVESTED in the Scholarship Perpetual Trust Fund, so that my contribution today can keep on giving, year after year!

And that makes me feel like my contribution really means something, both now and in the long term! I have thought it over, and I know how important 100% participation is for Section pride! So, Dennis, ***I'M IN FOR 2019***

Professionally yours,

Times are really (GREAT poor), so I am pledging:

____ 30 Bucks A Week (\$1560 for 2019)

____ 30 Bucks A Month (\$360 for 2019)

____ 30 Bucks A Year (\$30 for 2019)

Other: _____ (Every little bit is better than nothing!)

___ I'll make it easy on you; I have enclosed my check, made out to "Angelo Tagliacozzo Memorial Geological Scholarship Trust Fund".

___ Please invoice me for my 2018 pledge by 10/31/19. I'll pay by 12/1/19.

Signed: _____

Name Printed: _____

Address: _____

Mail this Pledge to: NE/AIPG Geological Scholarship Trust Fund, c/o Bob Blauvelt,
345 Stuyvesant Ave Lyndhurst, NJ 07071

- or -

Email this Pledge to: NE/AIPG Geological Scholarship Trust Fund, c/o Bob Blauvelt
blauvelt@geiconsultants.com