

AMERICAN INSTITUTE OF PROFESSIONAL GEOLOGISTS

Northeast Section **NEWSLETTER** AUTUMN 2024

As published on 9/9/2024

NE-AIPG FALL MEETING!
Dinosaur State Park, Rocky Hill, CT
OCTOBER 11, 2024 [Page 18](#)

**NYSCPG's Geology Days
Conference [Page 19](#)**
Saratoga Springs, NY
November 11-13, 2024

Field Trips
Sponsored by
NE-AIPG!

Give a Little or a Lot to
the Profession That Has
Given You So Much!
**DO SOMETHING,
RIGHT NOW ONLINE**
by going to the
Scholarship Fund on
[Pages 89 - 90](#)



**ATMGS Scholarship
Thank you
Messages**
[Page 21](#)

**Grace Levins' Final
Journey Installment**
[Page 30](#)

<https://ne-aipg.org>

EXCELLENCE ON EVERY LEVEL™

CASCADe provides a full range of environmental and geotechnical drilling, site investigation and characterization, and environmental remediation technologies. Our vision is to integrate technology, safety, sustainability and human potential to tackle the challenging environmental and geotechnical issues facing our clients.

YOUR PARTNER FROM CONCEPT TO CLEAN UP

DRILLING

environmental, geotechnical, utility
clearance, IDW, sonic, auger, rotary, direct
push

SITE CHARACTERIZATION

high resolution site characterization,
sampling, data visualization, MHPT, UVOST,
CORE™™™, WATERLOG™™™, OIP™™

REMEDIATION

in situ, ex situ, collaborative design,
thermal, chemical, biological,
emplacement

CONTACT

ADT

Environmental &
Geotechnical Drilling
Bill Poupis
516-616-6026 EXT 105
wpoupis@aquiferdrilling.com

CASCADe

Strategic Account Manager
Jay Boland
M: 413-329-7525
jboland@cascade-env.com

VISIT US TODAY AT WWW.CASCADe-ENV.COM TO LEARN MORE

With Cascade offices across the United States, subsidiaries and international partners, we deliver reliable services **nationwide.**

DRILEX

ENVIRONMENTAL



Drilex Environmental is one of New England's premier drilling companies

Drilex Environmental was established in 1995 and is one of New England's fastest growing, premier, full service Drilling and Environmental Construction companies. We are a quality drilling company, able to meet the ever changing needs of our clients.

www.drilexenv.com



Hartwell Business Park • 127 Hartwell Street • West Boylston, MA
508-835-6724 • Fax: 508-835-6734

AIPG NORTHEAST SECTION NEWSLETTER

AUTUMN 2024 EDITION No. 177

PUBLISHED BY THE NORTHEAST SECTION OF THE AMERICAN
INSTITUTE OF PROFESSIONAL GEOLOGISTS

TABLE OF CONTENTS:

2024 NE-AIPG Executive Committee Directory.....	5
2024 Executive Committee Meeting Schedule.....	7
2024 Index of Advertisers.....	8-9
Presidential Ramblings.....	11
NE-AIPG Fall Meeting.....	18
NYSCPG Geology Days Conference.....	19
Angelo Tagliacozzo Scholarship 2023-2024.....	20
Thank you Messages from the Angelo Tagliacozzo Scholarship 2023-2024.....	21
The Slayback Award.....	25
NYSCPG News.....	26
Grace Levens' Journey with a Thomas J. Watson Fellowship Final Installment... ..	30
AIPG's Services: Mentoring Program & Career Center.....	39
From the Editor's Desk.....	48
20,000-Year-Old Columbian Mammoth Bones Discovered in Texas.....	49
Brazilian Scientists Race to Recover Fossils Unearthed by Record Floods.....	52
NE-AIPG ExCom Meeting Minutes.....	56
AIPG Mission.....	69
Piggybacking: Service Expanded for NE/AIPG Advertisers!.....	72
NE-AIPG 2024 Publication Schedule.....	76
ATMG Scholarship List of Contributors.....	82-83
ATMG Scholarship Overview.....	84
Angelo Tagliacozzo Scholarship Perpetual Trust Fund Contribution Form <i>Please Contribute Now!</i>	85

NEWSLETTER EDITOR

Kim Burger
Roux Environmental Engineering
and Geology, D.P.C.
209 Shafter Street
Islandia, NY 11749
631-780-2956 (Cell)
kburger@rouxinc.com



PUBLISHER & ADVERTISING MANAGER

Dick Young
Consulting Geologists, LLC
179 Intervale Road
Parsippany, NJ 07054
973-335-2289 (Office)
973-335-9799 (Fax)
ryoungnj@aol.com

The Newsletter of the Northeast Section of the American Institute of Professional Geologists is digitally published four times annually at https://ne-aipg.org/Newsletter_copy and www.issuu.com/neaipg/docs. Design and layout by Kim Burger and Dick Young. Section Members and Advertisers are alerted to each issue by email. Many thanks are extended to all who helped in compiling this issue.

2024 NE-AIPG EXECUTIVE COMMITTEE AND SUBCOMMITTEES

PRESIDENT

Kelly A. Weyer, CPG-11826
Clean Globe Environmental LLC
PO BOX 1895, New City, NY 10956
Work: 1-888-454-5923, Ext. 700
E-mail: kweyer@cg-env.com

PRESIDENT ELECT/VICE PRESIDENT

OPEN POSITION

PAST PRESIDENT

Jennifer Rhee, MEM-2805
HDR Inc.
1 International Blvd, Floor 10
Mahwah, NJ 07495
Work: (201) 335-9336
Cell: (845) 664-5218
E-mail: jennifer.rhee@hdrinc.com

SECRETARY

Mitchell T Ward
FPM Remediations Inc.
181 Kenwood Ave
Oneida, NY 13421
Work: 315-336-7721 ext 230
E-mail: m.ward@fpm-remediations.com

TREASURER

Scott M. Hulseapple, CPG-11363
Alpha Geoscience
679 Plank Rd.
Clifton Park, New York 12065
Work: (518) 348-6995
E-mail: shulseapple@alphageoscience.com

MEMBERS-AT-LARGE 2023-2024

Trevor M. Gowan, MEM-1995
Alpha Geoscience
679 Plank Road
Clifton Park, New York 12065
Work: (518) 348-6995
Fax: (518) 348-6955
E-mail: tgowan@alphageoscience.com

Michael G. Grifasi, CPG-11489
Ramboll
333 West Washington Street
Syracuse, NY 13202
Work: (315) 967-0484
E-mail: Michael.grifasi@ramboll.com

Scott Tucker
Ramboll
333 West Washington Street
Syracuse, New York 13202
Work: (315) 956-6345
Cell: (315) 391-0756
E-mail: scott.tucker@ramboll.com

MEMBERS-AT-LARGE 2024-2025

Laurie Scheuing, CPG-09898
46 Homestead Rd
Saratoga Springs, NY 12866-5808
Work: (518) 695-9445
E-mail: lescheuing@aol.com

Adam Kaiser, ECP-1106
Ramboll
333 West Washington Street
Syracuse, New York 13202
Cell: (718) 551-5627
E-mail: Adam.brian.kaiser@gmail.com

Stacy Stieber, CPG-11696
WSP USA
6 research Drive, Suite 260
Shelton, CT 06484
Work: (475) 882-1723
E-mail: Stacy.Stieber@wsp.com

SCREENING BOARD CHAIRMAN

Charles A. Rich, CPG-04433
CA Rich Consultants, Inc.
17 Dupont Street
Plainville, NY 11803-1602
Work: (516) 576-8844 Fax: (516) 576-0093
E-mail: crich@carichinc.com

NEWSLETTER EDITOR

Kim Burger
Roux Environmental Engineering and Geology, D.P.C.
209 Shafter Street
Islandia, New York 11749
E-mail: kburger@rouxinc.com

DIRECTORY OF MEMBERS EDITOR

Curtis A. Kraemer, CPG-06019
111 Van Cedarfield Road
Colchester, CT 06415
Work: 860-861-4644
E-mail: curtakraemer@comcast.net

PUBLISHER & ADVERTISING MANAGER

Richard H. Young, CPG-03356
Consulting Geologists, LLC
179 Intervale Road
Parsippany, NJ 07054
Work: (973) 335-2289
Fax: (973) 335-9799
E-mail: ryoungnj@aol.com

WEBMASTER

Kelly Weyer
Clean Globe Environmental LLC
PO BOX 1895, New City, NY 10956
Work: 1-888-454-5923, Ext. 700
E-mail: kweyer@cg-env.com



(Executive Committee continued on page



Delta Well & Pump Co., Inc.

WATER AND ENVIRONMENTAL DRILLING

97 Union Avenue PO Box 1309 Ronkonkoma, N.Y. 11779

Phone: (631) 981-2255

Fax: (631) 981-2369

Delta serves municipal and industrial customers

Providing a full range of drilling capabilities



(Executive Committee continued from page 5)

**2024 NEAIPG EXECUTIVE COMMITTEE
AND SUBCOMMITTEES**
(As updated 2/6/2024)

Advertising Sales: Dick Young

Advisory Board Delegate: Kelly Weyer

Financial Planning and Treasury: Scott Hulseapple, Bob Blauvelt,
Dick Young

Legislative Liaison and Registration: Tom West (NY),
Sam Gowan (NY), Tim Stone (ME), Dorothy Richter (NH),
Laurie Scheuing (NY)

Membership: OPEN POSITION

Mentoring: Dennis McGrath (Chairperson), Chris Brown

Nominating: Kelly Weyer, Bob Blauvelt, Jennifer Rhee

Public Affairs: Dennis McGrath (Chairperson)

Scholarship: Kelly Weyer (Chairperson), Sam Gowan, Michael Grifasi,
Al Moffit, Jennifer Rhee, Tom West

Section Directory: Curt Kraemer, Editor; Dick Young, Publisher

Section Meetings: Kelly Weyer, Bob Blauvelt, Michael Grifasi

Section Newsletter: Kim Burger, Editor; Dick Young, Publisher

Screening Board: Charles Rich (Chairperson); William Prehoda,
James Moore, Kelly Weyer

2024 EXECUTIVE COMMITTEE MEETING SCHEDULE:

January 9th

March 4th

April 17th — Spring Meeting with HMPGA

July 1st

September 10th

October 11th — Fall Meeting

December 2nd

**ExCom Meetings are
typically held from
4:00 to 6:00 pm via
teleconference.**

2024 INDEX OF ADVERTISERS

ENVIRONMENTAL CONSULTANTS

AECOM	<u>23</u>
Alpha Geoscience	<u>24</u>
Arcadis	<u>46</u>
C.A. Rich Consultants, Inc	<u>33</u>
CHA	<u>37</u>
CSG Environmental Consultants	<u>57</u>
EAI, Inc	<u>14</u>
EWMA	<u>13</u>
FPM-Remediations	<u>47</u>
Gannett Fleming	<u>37</u>
GEI Consultants, Inc	<u>36</u>
GEOSPHERE Environmental Management, Inc.	<u>29</u>
Hager GeoScience, Inc	<u>51</u>
Hager-Richter Geoscience, Inc	<u>41</u>
Haley & Aldrich	<u>40</u>
Lincoln Applied Geology, Inc	<u>40</u>
MC Environmental, LLC	<u>13</u>
McLane Environmental, LLC	<u>29</u>
PVE	<u>41</u>
Regenesis	<u>23</u>
Richter Geology PLLC	<u>40</u>
RPI Group	<u>59</u>
Roux Associates, Inc	<u>11</u>
Tectonic Engineering	<u>51</u>
Terracon	<u>28</u>
TRC Environmental Corporation	<u>36</u>

DRILLING

AARCO Environmental Services Corp	<u>68</u>
Allegheny Instruments, Inc	<u>62</u>
Boyd Artesian Well Co., Inc	<u>67</u>
Cascade Drilling	<u>Inside Front Cover</u>
Connecticut Test Borings, LLC	<u>62</u>
Directional Technologies, Inc	<u>71</u>
Drilex Environmental, Inc	<u>3</u>

(Index of Advertisers continued on page 9)

2024 INDEX OF ADVERTISERS (Cont.)

DRILLING (Cont.)

Eastern Analytical, Inc.....	<u>61</u>
General Borings, Inc.....	<u>55</u>
Geophysical Applications, Inc.....	<u>65</u>
Maine Test Borings.....	<u>72</u>
MB Drilling, LLC.....	<u>65</u>
New England Boring Contractors of CT, Inc.....	<u>69</u>
Pennsylvania Drilling Company.....	<u>70</u>
Probe Support Services.....	<u>10</u>
Soil Mechanics Drilling Corporation.....	<u>64</u>
Soil Testing, Inc.....	<u>67</u>
Stephen B. Church, Co.....	<u>70</u>
Summit Drilling Co., Inc.....	<u>63</u>
Zebra Environmental.....	<u>66</u>

ENVIRONMENTAL FIELD SERVICES

Alpha Analytical.....	<u>54</u>
Atlantic Screen & Mfg., Inc.....	<u>78</u>
Badger Injection Solutions.....	<u>79</u>
Complete Environmental Testing, Inc.....	<u>78</u>
ConeTec, Inc.....	<u>57</u>
Delta Well & Pump Co., Inc.....	<u>6</u>
EnviRent Corporation.....	<u>81</u>
Enviroscan.....	<u>75</u>
Envirosite Corporation.....	<u>80</u>
GEOD Corporation.....	<u>74</u>
Island Pump and Tank.....	<u>81</u>
Layne Christensen Company.....	<u>47</u>
Samuel Stothoff Company, Inc.....	<u>78</u>
SJB Services, Inc.....	<u>80</u>
X-ray Utility Locating Service.....	<u>77</u>
York Analytical Laboratories, Inc.....	<u>24</u>

www.geoproberentals.com

Rentals & Repairs

Ready
for
Spring?



Geoprobe® RIGS FOR RENT
7822DTs • 54LT tracks
420M Portables
*plus Tooling
and Trailers*



888.215.4666

info@rentaprobe.com

PROBE
SUPPORT SERVICES
www.geoproberentals.com

RENTAL • REPAIR • SERVICE • MAINTENANCE



Presidential Ramblings AUTUMN 2024



By NE-AIPG President Kelly Weyer, CPG-11826

Greetings Northeast Section and Friends of the Section!

As we move through another season, we can see the summer flora start to slow their march to cover the ground, the mornings are getting chilly while the afternoons are still quite warm, summertime travels and adventures are coming to an end, and most of us are switching gears to prepare for the busy schedules that seem to fill-up too quickly moving toward the end of the year deadlines and holidays.

Summer is still the time that most of us take vacations. This summer, I was able to get to the west coast, and to the National AIPG Meeting in Durango, Colorado. I will give a summary of the National Meeting at the end of these Ramblings. If you have not attended a National

(Ramblings continued on page 12)

ROUX

- Brownfield Redevelopment
- Phase I & Phase II ESAs
- Constructed Treatment Wetlands
- Wetland Delineations and T&E Evaluation/Permitting
- Petroleum Remediation
- Stormwater/Wastewater Management
- Remediation Designs
- Litigation Support

For more info: 1.800.322.7689 or www.rouxinc.com

California • Illinois • Massachusetts • New Jersey • New York • Texas • Virginia

(Ramblings continued from page 11)

Meeting, you are encouraged to do so. The National Meeting is a great opportunity to meet geologist with a variety of backgrounds and interests from around the country and beyond, and it is a great time to share ideas and interests, and most importantly, there are always great field trips showcasing the local geology. The next National Meeting is a bit closer to the Northeast than Colorado, and will be in Saint Louis, Missouri, in October 2025.

Coming up soon, we hope your calendars are marked to attend NE-AIPG's Fall Meeting on October 11th, 2024, at Dinosaur State Park (DSP) in Rocky Hill, CT, in association with DSP and the Geological Society of CT (GSC). We'll start our event in the late afternoon with a guided tour of DSP, then we will have time to socialize and enjoy food and drinks, before ending the evening with a technical talk in the Auditorium of the Exhibit Center at DSP. We set this event for a Friday, in hopes that members will be able to fit this into their busy schedules. This looks like it should be a great time to checkout DSP and socialize with fellow geologists. We hope to see you there!

Autumn is typically a busy time for NE-AIPG. Besides hosting the Fall Meeting in October, NE-AIPG will vote on Executive Committee Board positions and choose associated committee members before the end of the year. The Angelo Tagliacozzo Memorial Geological Scholarship (ATMGS) 2024-2025 application be available online in mid-September and will close in early-December. Awards will be finalized in Spring of 2025. If you know qualified Junior or Senior Geology students, make sure they know about this opportunity! If you have not donated to the ATMGS trust fund this year, we encourage you to do so, to help support our future Geology Professionals.

Another event to look forward to later in the year is NYSCPG's 3rd Annual Geology Days Conference, in Saratoga Springs, NY, on November 11-13, 2024. Many AIPG members will be in attendance, and NE-AIPG is Sponsoring the two field trips that should be well worth attending.

As pages of the calendar keep flying off, it won't be long until we are gathering thoughts to start planning events for 2025. If you have any ideas for a talk or field trip location, we are happy to hear what you have to say. You can email us at info@ne-aipg.org with suggestions or questions at any time.

And now, back to the summer for a moment. It doesn't seem to matter if a vacation, or time away from a normal work day, is a couple of days,

(Ramblings continued on page 15)



www.mc-environmental.net

MC ENVIRONMENTAL, LLC

Environmental Services & Consulting

Hydrogeology Water Resources Compliance

26 Railroad Avenue, No.182 Babylon, NY 11702-2204

631 321 4500

Fax 631 321 0190



An Environmental Consulting
& Remediation Firm

Timely Response. Time-Proven Solutions.

- Guaranteed Fixed-Price Remediation
- Environmental Due Diligence
- Regulatory Compliance
- Litigation Experts and Environmental Forensics
- Indoor Air Quality

Call the experts at EWMA to assist with
your environmental questions.

(800) 969-3159
www.ewma.com

Parsippany, NJ
Hamilton, NJ
New York, NY





EAI INC

ENVIRONMENTAL MANAGEMENT SERVICES
SPECIALTY CONTRACTING

YOUR **EXPERT** IN VAPOR INTRUSION.

STELLAR WORKMANSHIP.

A specialty services contractor for over 30 years, the EAI team delivers stellar installations and support for the most complex mitigation of vapors and water intrusion. Contact us to discuss your project.

- CETCO Liquid Boot & GeoVent
- Sub-Slab Depressurization
- Gas Monitoring Systems
- Design/Build Services
- Waterproofing
- Air Barriers
- Specialty Contracting

Jersey City, NJ, Fernandina Beach, FL
& Charlotte, NC

201-395-0010

www.eaienviro.com



(Ramblings continued from page 12)

a couple of weeks, or even a month long; it doesn't seem to take long before the feelings of being in a new place, and seeing a new horizon, fade into distant past memories. So, before that happens to my travels this summer, I will share a few snippets of my trip to the National AIPG conference in Durango, Colorado.



Serpentinite by the Golden Gate Bridge

Although I'm based in New York, my travels to the National Meeting in Colorado began in California. Since I planned time off from work for the National Meeting, I decided to extend my time off, and add a vacation before the conference. My travels in California were along the coast and slightly inland, from Monterey to San Francisco. If you have not been to that part of the country, it is worth experiencing the coastal micro-climates and rocky shorelines, and the warm hilly interior. Most travels on this trip were road trips, with short hop-out visits. We didn't have much time to hike into the hills, or visit nearby Yosemite National Park, but there's always next time. I was able, however, to get a look at the serpentinite outcrop at the base of the Golden Gate Bridge, and take a selfie with the beach and partially rocky shoreline.



From California, I traveled to Durango for the National Meeting, with a short layover in Denver. The Durango airport was small and easy to navigate. The airport was less than 30 minutes from the hotels around Durango and the National Meeting at Fort Lewis College.

Attendees that flew to the National Meeting either rented cars, or relied on a car service, carpooling, or hotel shuttles to travel around during the conference. AIPG uses a conference app that provides an easy-to-use

(Ramblings continued on page 16)

(Ramblings continued from page 15)

platform to coordinate car-pooling, and for easier networking, planning of meet-ups, sharing photos, and many other helpful options.

On the first day of the National Meeting, two events, the National AIPG Executive Committee (AIPG-ExCom) and Advisory Board meetings and the Student and Early Career Professional Workshop, typically take place concurrently.

The AIPG-ExCom meeting is open to all members. Sections are encouraged to have a representative present for the meeting, and a delegate in attendance for the Advisory Board meeting that takes place after the AIPG-ExCom. The Sections are involved in the Advisory Board meeting, where they give Section reports and have discussions on successes and challenges. Advisory Board members for the following year are elected at, and from the delegates nominated in, this meeting.

The following days of the National Meeting are typically filled with field trips to regional sites, and talks on a variety of topics. Although some field trips overlap with talks and poster sessions, when possible, entire days are dedicated to field trips and to talks. Annual evening events at the National Meeting include trivia night, a silent auction, and the Awards dinner. Hopefully you will consider attending the October 2025 National Meeting in Saint Louis, Missouri!

We hope to see many of you at the Fall Meeting on Friday, October 11th, at Dinosaur State Park, in Rocky Hill, CT!!

Sincerely,

Kelly Weyer
NE-AIPG
President

RIGHT:
***Autumn at the
Deer Lake
Creek riffles in
Forest Park,
St. Louis,
Missouri***



(Ramblings continued on page 17)

(Ramblings continued from page 16)



LEFT & BELOW:
*Views from
Durango, CO.*



BELOW LEFT & RIGHT:
*An icebreaker and
a luncheon at the
AIPG National
Meeting at Fort
Lewis College, in
Durango, CO.*



(End)



NE-AIPG Fall Meeting

Dinosaur State Park

~ *Friday-October 11, 2024* ~



An Evening at Dinosaur State Park, Rocky Hill, CT

Join NE-AIPG's in-person Fall Meeting
at the rocks where dinosaurs left their tracks.

Travel back to the Jurassic through our private guided tour of the Park, discussing the regional geology and significance of the world-class dinosaur trackway.

After the tour ends, and the Park closes to the public, we head the Exhibit Center for time to socialize with colleagues while enjoying an included selection of New Haven Style Pizza cooked onsite and a variety beverages, such as sodas, beers, wines, spiked and non-spiked seltzers.

We end the evening with a Technical Talk.

We plan to offer 1 PDH for the talk. The PDH is pending approval by NYSCEP for NY-PG and Design Professionals. Details will be announced soon.

Expected Schedule: the entire event will take place at Dinosaur State Park.

3:30PM-4:00PM – Members meet and check in.

4:00PM-5:00PM – Guided Dinosaur State Park Tour, explore the trackway.

5:00PM-7:00PM – Social/Networking with food and drinks in and around the Exhibit Center.

7:00PM-8:00PM – Technical Talk in the Auditorium – Details to be announced soon.



Visit www.ne-aipg.org for more details, and to register!!
Sponsorships are available, and information is on the website.



Will the only one that sees a tracking dinosaur when I look at the outline of the NE-AIPG logo?

Registration rates:
 \$40 - AIPG/GSC Member no PDH
 \$55 - AIPG/GSC Member with PDH
 \$50 - Non-Member no PDH
 \$65 - Non-Member with PDH
 Register now at www.ne-aipg.org
 Sponsorships are also available on the website.

AGS:
 Geological Society of Connecticut
 GSC members are invited to this event, and are encouraged to attend. Members are offered a discounted registration.

CONFERENCE ANNOUNCEMENT

NEW YORK STATE COUNCIL OF PROFESSIONAL GEOLOGISTS PRESENTS:

THE THIRD ANNUAL

GEOLOGY DAYS CONFERENCE

Saratoga Springs, NY
November 11-13, 2024



INTRODUCTION

The New York State Council of Professional Geologists invites you to attend the Third Annual Geology Days Conference.

Join over 300 professionals at the Holiday Inn in Saratoga Springs from November 11-13. Information regarding the specifics of the conference can be found in this Announcement and any future updates can be found on the [Geology Days Page](#) of our website www.nyscpg.com.

Approved conference presentations will provide continuing education (PDH) credit for Design Professionals (geologists, engineers, etc.) for New York.

CONFERENCE SCHEDULE

Monday, November 11

2:00 pm-4:00 pm Annual Member Meeting

6:00 pm-8:00 pm Ice Breaker Reception

Tuesday, November 12

7:00 am - 8:00 am Breakfast

8:00 am - 5:00 pm Technical Presentations

5:30 pm - 8:30 pm Optional Dinner Program

8:00 am-12:00 pm Field Trip - Mineral Waters of Saratoga Spring

Wednesday, November 13

7:00 am - 8:00 am Breakfast

8:00 am - 5:00 pm Technical Presentations

8:00 am-12:00 pm Field Trip - Albany Pine Bush

ANNUAL MEMBERSHIP MEETING

Join the NYSCPG Board of Directors for the Annual Membership meeting from 2:00 pm to 4:00 pm on Monday, November 11. Discussions will include the current state of the organization and the profession in New York, where the organization plans on improvements for the near future, and how you can help. Members and potential members are encouraged to attend.

CONFERENCE ASSISTANCE

John Nadeau | Executive Director

Phone: 518-579-6580

Email: Jnadeau@nyscpg.com

Matt Pugliano | ASM

Phone: 518-579-6580

Email: Support@nyscpg.com

(Geology Days continued on page 34)



**Angelo Tagliacozzo
Memorial Geological
Scholarship
2023-2024**

**By Kelly Weyer, CPG-11826
Scholarship Chairperson**

**The 39th Annual Angelo Tagliacozzo
Memorial Geological Scholarship (ATMGS)
season is underway!**

We are reviewing and editing the online application form, information and instructions, and contact lists for distribution of the 2024-2025 ATMGS Announcements.

The ATMGS Application opens online in September '24, and announcements are sent to colleges and universities located within the eight states of the NE-AIPG region. The online application closes in early December '24. The ATMGS Committee reviews the applications from December '24 to February '25, and recommends awards for consideration and approval by the NE-AIPG Executive Committee and the ATMGS Board of Trustees during the March '24 Executive Committee meeting. We anticipate the Awards will be announced in March-April '25, and recipients will receive Awards in April-May '25.

Have you donated to the ATMGS fund this year? If not, we encourage you to do so, to ensure we can continue providing substantial awards to future Geologists, and to support the continued success of the profession. You can donate using the form on [Page 85](#), or online through the [NE-AIPG website](#).

(ATMGS continued on page 21)

(ATMGS continued from page 20)

For more information on the ATMGS, please visit the NE-AIPG's website <https://ne-aipg.org/> and see [Pages 20-22](#) and [Pages 84-85](#) in this newsletter. Please contact us with any questions at neaipg.atscholarship2@gmail.com.

Thank you to everyone who has supported the ATMGS program (through dollars or time) over the years, and extra Thank You to those that contribute every year!

Congratulations, again, to the 2023-2024 Angelo Tagliacozzo Memorial Geological Scholarship (ATMGS) recipients, and a big thank you to all those that support the ATMGS. We would like to share a few words of appreciation from the 2023-2024 ATMGS recipients.

I am grateful for being chosen to receive this scholarship.

I'd like to thank the ATMGS Committee, the NE-AIPG Board for their generous donation to alleviate the financial burden of my undergraduate education. I graduated cum laude with degrees in B.S. Geological Sciences and B.S. Environmental Science.

Nick Janowski



Thank you so much for this opportunity! All the best, Aiyana Vazquez

Thank you so much for this award! Best, Angela Douglass

Wow thank you very much! I greatly appreciate this award and am honored to have been chosen as one of the recipients.

Sincerely, Matthew James

(ATMGS continued on page 22)

(ATMGS continued from page 21)

Thank you very much for this opportunity!

Dear Members of the Angelo Tagliacozzo Memorial Geological Scholarship Committee and the Northeast Section of the American Institute of Professional Geologists, I wish to express my gratitude for selecting me as a recipient of the Angelo Tagliacozzo Memorial Geological Scholarship. This generous award will significantly ease the financial burden during my studies at the University of Delaware, where I will be studying for my master's in geophysics.

This scholarship is a great honor and a huge help as I pursue my academic and career goals in geosciences. Your support acts not only as a source of financial aid, but also as encouragement that I have selected the correct path.

With this confidence placed in me, I will make the most of this opportunity by working hard towards excellence in my studies and contributing to the geoscience community.

Thank you again for your generosity.

With sincere thanks,
Sean Gilbert



Thank you very much for awarding me this scholarship.
Thank you, Jade Simoneau

Thank you so much. I am honored to receive the scholarship.
Regards, Victoria Castle



(End)



AECOM

**Imagine it.
Delivered.**

As a fully integrated firm, AECOM connects knowledge and experience across our network of experts to help solve our client's most complex challenges. From high-performance buildings and transit systems, to resilient communities and environments, our work is transformative, differentiated and vital.

aecom.com

Concerned about Site Remediation Budgets, Timelines and Technology Performance?



We can help.

- Scalable site remediation solutions for almost any budget
- Proven remediation technologies on over 20,000 sites worldwide
- Expertise and experience to meet timeline expectations
- Combined remedy approaches to maximize performance and cost savings

**www.regenesis.com
(949) 366-8000**





Professional Geologic and Hydrogeologic Consulting

679 Plank Road, Clifton Park, NY 12065

Phone: (518) 348-6995

www.alphageoscience.com

Independent Laboratory Data Validation

Emergent Contaminants

- PFOS, PFOA, and other PFAS
- 1,4-dioxane

Quality Assurance/Quality Control

- Validation of soil, water, and air data
- Preparation of EDDs, SOPs, and QAPPs

Contact: **Scott Hulseapple, PG, CPG**
shulseapple@alphageoscience.com

Mining Services

Hydrogeologic Investigation

- Impacts to surface and ground water
- Potential impacts from mine inflows
- Mitigation of mine inflows

Mineral Resources

- Resource and Reserve Analyses
- Aggregates, Sand, and Gravel
- Industrial Minerals, Metals and Salt
- Permitting

Contact: **Steven Trader, PG, CPG**
strader@alphageoscience.com



The Environmental
Laboratory of Choice

Your Greatest Resource is our Customer Service

- ▶ Largest PFAS-only lab facility
- ▶ Fast turnaround times + rush service
- ▶ Expert staff and technical resources
- ▶ Dedicated York Force courier team

Comprehensive air, water and soil analyses with unmatched PFAS expertise.

Local Laboratories and Client Service Facilities

New York
Queens, Islandia, Nyack

Connecticut
Stratford, Newtown

New Jersey
Prospect Park, Toms River



Scan to visit
yorklab.com

(800) 306-YORK
(203) 325-1371
clientservices@yorklab.com
www.yorklab.com

For Drinking Water Testing:
You Need to Know
What's in Your H2O
YorkLabWaterTest.com

The Slayback Award

Anyone may provide written, descriptive nominations of candidates (and of their contributions to NE/AIPG) for the Slayback Award, by *CONFIDENTIALLY submitting the nomination in writing to any one of the previous recipients* (Dick Young, Dennis McGrath, Dan St. Germain, Tom West, Curt Kraemer, Bob Blauvelt, and Jeff Frederick).

The concept of the Russell G. Slayback Award is to provide: "Honor and Recognition of Exemplary Service, Above and Beyond, To the Northeast Section of AIPG." Thus, the Slayback Award is intended to be presented on those rare occasions when truly landmark, exemplary service has been given to the Northeast Section of AIPG for a protracted period of time by an AIPG Certified Professional Geologist who is a Member of the Northeast Section. "On those rare occasions" is the operative phrase, as the Slayback Award was never intended to be "presented annually."

Selection of Awardees is made by the previous recipients, in confidential discussions with the NE/AIPG Section President. Individual Members of the ExCom may be consulted for their input on a confidential basis. Confidentiality, to maintain the element of surprise in honoring the Recipient(s) and his/her/their long service, is a cornerstone concept of the Slayback Award.

Additionally, given that Russ was committed to helping/mentoring young Geologists and was a long-time, devoted proponent of the Northeast Section's Angelo Tagliacozzo Memorial Geological Scholarship Trust Fund, Donations In Memory and Honor of Russ Slayback may be made to the NE/AIPG Geological Scholarship Perpetual Trust Fund and should be written to: Angelo Tagliacozzo Memorial Geological Scholarship Trust Fund, and mailed to: NE/AIPG Geological Scholarship Trust Fund, c/o Scott Hulseapple, 679 Plank Rd, Clifton Park, NY 12065

Alternatively, you can make your Contribution, RIGHT NOW, ONLINE, by going to <https://ne-aipg.org/> and clicking "Donation To Scholarship Fund" (under **Quick Links** on the home page). All Contributions to the Scholarship Trust Fund are invested, perpetually, with earnings thereon used solely for the Scholarship. NE/AIPG bears all costs of administration. Please ask your employer about matching your tax-free contribution and about additional corporate contributions.

For further information, contact Kelly Weyer: neaipg.atscholarship2@gmail.com

(End)

NYSCPG NEWS

By John Nadeau (CPG-1181), Executive Director

The first half of 2024 has been an active one for NYSCPG. The legislative and governmental relations aspect of NYSCPG gained momentum under Campbell H. Wallace, Esq, a partner at Pastel Rosen & Wallace LLP. Campbell started representing the organization and profession in February and was actively engaged with the Education Department, the other Design Professional organizations, and the Legislature on many items.

A couple of key legislative items that were lobbied for during the 2024 Legislative session were:

- Updating the geology licensing requirements by removing the provision allowing for a substitution of 12 years working experience for a bachelor's degree or higher based on a program in geology. The legislation also changes reference to "intern geologists" to "geologists in training." Finally, a person seeking licensure pursuant to the current 12-year experience ladder is authorized to file an application within 2 years of the effective date of the legislation in order to preserve the ability to qualify for geology licensure based on experience. This update would bring the profession of geology in line with engineering, which removed this pathway a couple of years ago.
- Allowing engineering companies to receive certificates of authority to practice geology. The legislation would permit grandfathered engineering companies that employ at least one officer or director licensed as a professional geologist to practice geology. This bill has been in the Legislature to allow geologists in the grandfathered engineering firms to practice geology in accordance with Education Law.

• NYSCPG sponsored a webinar on the NYS Application Process, on Wednesday, May 15, presented by Bill Kelly, PG and Eric Greppo, PE. The course was attended by over 200 people and discussed the communication, organization, and expression of experience on the licensure application. We will work with the Board office to present similar courses in the future to assist people looking to obtain licensure.

NYSCPG will be hosting the third annual Geology Days in Saratoga Springs, NY, November 11 - 13, 2024. We are looking forward to another sold-out event, with two days of informative presentations, field trips, and other optional events. Registration for the event is now open and will end on November 1 or when the event sells out. Visit the

(NYSCPG News continued on page 25)

(NYSCPG News continued from page 24)

Geology Days page at www.nyscpgeology.com/Geology-Days-2024. The event will be hosted at the Holiday Inn Saratoga Springs and rooms can be booked at <https://www.holidayinn.com/redirect?path=rates&brandCode=HI&localeCode=en®ionCode=1&hotelCode=SGANY&checkInDate=11&checkInMonthYear=102024&checkOutDate=13&checkOutMonthYear=102024&PMID=99801505&GPC=GEO&cn=no&viewfullsite=true>.

We are excited to be teaming again this year with NEAIPG for the field trip portion of the conference. Tuesday’s field trip, the “Stratigraphy, Structure, and the Mineral Waters of Saratoga Springs,” will include a detailed inspection of the Old Red Spring, a walking tour of the flowing springs within downtown Saratoga Springs and the Saratoga Spa State Park. The trip on Wednesday, “The Albany Pine Bush: Globally-Rare Ecology Built on a Unique Foundation of paraglacial sand dunes,” will feature a guided walking tour through the dunes and highlight recent advancements in both cutting edge biodiversity conservation and paraglacial geomorphology. As always, please reach out to me with any questions or comments via email at jnadeau@nyscpgeology.com or by phone at 518-579-6580.

Regards,



John M. Nadeau, PG
NYSCPG Executive Director



(End)



Reliable.

Convenient Responsive Innovative

Your business objectives are our top priority. We deliver information on time so you avoid delays, surprises and costly mistakes down the road. For projects large and small, single- or multi-site, you can rely on consistent results nationwide.



Manchester, NH [603] 647 9700
Offices Nationwide terracon.com

Terracon

Geotechnical ■ Environmental ■ Construction Materials ■ Facilities

GEOSPHERE

ENVIRONMENTAL MANAGEMENT INC.

NEW HAMPSHIRE

MASSACHUSETTS

(603)-773-0075

(888)-838-6571

WWW.GEOSPHERENH.COM

GROUNDWATER SUPPLY

SITE ASSESSMENTS

LSP SERVICES

GEOTHERMAL

WETLANDS

PROFESSIONAL CONSULTANTS PROVIDING
GROUNDWATER & ENVIRONMENTAL SOLUTIONS

McLANE ENVIRONMENTAL, LLC

Range of Services

Ground Water Modeling

Contaminant Fate
and Transport

Aquifer Characterization

Remediation Design
and Optimization

Exposure and
Risk Assessment

Water Resources
and Supply

Natural Resource
Damages

Coastal Zone
Modeling

Wastewater
Disposal Analyses

GIS and
Data Visualization

Litigation Support



Providing ground water consulting services to clients nationwide, including:

- industrial corporations,
- law firms,
- municipalities,
- DOD, DOE, and others.

Specializing in ground water modeling, chemical fate and transport, well field optimization, and litigation support services.

Visit our web site at
www.McLaneEnv.com

E-mail: info@McLaneEnv.com

707 Alexander Road, Suite 206
Princeton, NJ 08540

Ph. 609.987.1400 Fax 609.987.8488

A Recent ATMGS Recipient Finishes Her Coastal Resistance Journey with a Thomas J. Watson Fellowship

**By Grace Levins,
Recent Geoscience Major at
Union College & 2023 ATMGS Recipient**

Grace Levins, 2022-2023 ATMGS recipient, finished her excursion with the prestigious Thomas J. Watson Fellowship this year. Grace spent the year long journey visiting coastal communities “to study the physical, social and economic impact of sea level rise.”

Quote from <https://www.union.edu/news/stories/202304/watson-grace-levins-23-study-impact-sea-level-rise>

If you missed her previous updates, please go back to the NE-AIPG 2023 Autumn, 2023 Holiday, and 2024 Winter Newsletters. Please enjoy reading Grace’s final installment on updates from her Watson Fellowship travels.



“Some people would think after a full year of travel, it’s time for a break. Those people are not me. Hopping around the world for twelve months as a Thomas J. Watson Fellow has been one of the most transformative experiences. I am leaving this year with more questions than when I started, and my list of places to return to continues to grow. If I ever needed something to reignite my sense of wonder, this year has certainly done so.

Spending the year learning how coastal communities are adapting to sea level rise has

(Grace Levins continued on page 31)

(Joint Meeting continued from page 30)

also changed my path for the future. Though I began the year with a rather technical perspective, I quickly realized how important the social science side of adaptation is. I have recognized the gap between science and decision-making, and I feel **there's a growing need for** people working in the middle ground, translating between the two. I would also like to find ways to get the general public into the natural environment so the idea that **"if you don't see it, you don't have to care"** is not as prevalent with respect to climate change.



After my last update, I headed to Australia. I ended up staying for three months, making it the longest I spent in one country. This was partly due to an internship I held at the Bureau of Meteorology, which opened up countless doors to contacts working in the coastal space in Victoria. I then spent a month traveling up the East Coast and over **to the West. I should have kept count of the times I said, "How is this real?" because every turn seemed to lead me to a new, beautiful** landscape. I drove along the Great Ocean Road and stopped at places like Great Otway National Park and the Twelve Apostles. I explored the Southwest coast and saw the most vivid blue water I have ever seen. I watched so many sunsets over the ocean - **something I hadn't seen before growing up on the East Coast of the** US. Visiting Australia had always seemed like a hypothetical, yet there I was, utterly amazed with everything I saw.

As I continued to connect with people in Australia, I realized I had a growing list of recommended contacts for New Zealand, as well. Despite not being in my original travel plans, I shifted my schedule to fit in four weeks on the North Island. The best choice I made in New Zealand was taking a road trip from Auckland down to Wellington.

(Joint Meeting continued on page 32)

(Grace Levins continued from page 31)

This allowed me to stop in the geothermal wonderland of Rotorua, walk along the black sand beaches in Raglan, and complete the Tongariro Alpine Crossing. I constantly felt like I was on a different planet; no wonder they chose to film *The Lord of the Rings* there!



The last two months of my year consisted of traveling through the northern half of Germany and the Netherlands. When people ask **about my favorite places I've been to this year, I have to include Sylt** on the list. Sylt is the northernmost island in Germany and is absolutely stunning. I spent a week roaming the island, living amongst the massive dunes, admiring the iconic thatched roofs, and enjoying the strand orb beach chairs. I found myself back in the dunes once in the Netherlands. The largest of these systems is the Zandmotor, an artificial sand bank constructed using 21.5 million cubic meters of sand. I also visited vast expanses of salt marsh near Yerseke to learn how the marsh is seen as a form of coastal defense.

(Grace Levins continued on page 33)

(Grace Levins continued from page 32)



Humans have long since held a mechanistic worldview and have implemented many strategies to contain nature. Instead, we need to recognize that we are only a part of the system. If we learn to work with natural processes, maybe we can start feeling connected to the world again. As everything continues to change, will we learn to **change with it.**"

-from Grace Levins

(Grace Levins continued on page 44)



CARICH
ENVIRONMENTAL SPECIALISTS

Your Full-Service Environmental Expert Since 1982

- **Due Diligence**
- **Geology Services**
- **Emerging Contaminants**
- **Groundwater Resources**
- **Air Quality / Soil Vapor**
- **Construction Oversight**
- **Brownfield Redevelopment**
- **Remediation**
- **Peer Review**
- **Regulatory Liaison**
- **Litigation Support**
- **Valuations / Tax Cert.**
- **Expedited Deal Flow**
- **Strategic Thinking**

17 Dupont Street, Plainview, NY 11803 ■ Tel. 516.576.8844
Fax. 516.576.0093 ■ www.carichinc.com

CONFERENCE ANNOUNCEMENT

GEOLOGY DAYS 2024 SPONSORSHIPS

Sponsorships help keep conference fees affordable. Come and network with over 300 professionals.

Thank you to our 2024 Sponsors:

Gold: Alpha Geological Services, DPC | Langan Engineering | Miller Environmental Group | Posillico, Inc.

Silver: Island Pump & Tank, Co. | LIAPG | Tectonic Engineering | WSP | York Analytical Labs

Bronze: AARCO Environmental | Access Limited | Atlantic Testing Laboratories | Castleton Environmental | Directional Technologies, Inc. | Eco-Rental Solutions | ETEC, Inc. | GEI Consultants | Ground/Water Treatment & Technology | Hager-Richter Geoscience | Haley & Aldrich | HDR Engineering | High Ground Industrial | J.C. Broderick and Associates | LaBella Associates | Midwest GeoSciences | NOVA Geophysical Services | Pace Analytical | Pine Environmental | P.W. Grosser Consulting | Regenesis | SGS USA | Terracon Consultants, Inc.

Break: AKRF, Inc. | C.T. Male | Delta Well & Pump Co., Inc. | Earth Dimensions | EPhase 2 LLC | First Environment | Nothnagle Drilling | Pace Analytical | Phoenix Environmental Labs | Preferred Environmental Services

Field Trip: NE-AIPG

HOTEL RESERVATIONS Holiday Inn Saratoga Springs

232 Broadway Saratoga Springs, NY, 12866
Room Rate: \$145 per night plus tax
Group Discount Code: GEO.

[Click here for Hotel Information](#)

ATTENDEE REGISTRATION INFORMATION

Each person attending any part of the technical conference must register for the conference.

The registration fee covers the icebreaker reception, breakfasts, AM/PM breaks, and lunches on Monday and Tuesday.

All attending non-technical spouses and friends must be registered as "guests" for any events.

We recommend registering early, Geology Days 2023 Sold Out in early October! Consider becoming an NYSCPG member to qualify for a lower registration rate.

<https://www.nyscp.org/Join-Us>

STUDENT VOLUNTEERS

Contact John Madeau (jmadeau@nyscp.org) for more information. Spend time networking while assisting with the conference.

REGISTRATION DATES

June 25th - Early Bird Registration Opens
August 5th - Regular Rate Registration Opens
November 1st - Registration Closes

Registering November 1st- 4th, if space is available, a \$75 late fee will apply.

Registration Type	NYSCPG Member	Non-Member	Regulators
Early Bird Registration (June 25 - Aug 4)	\$350	\$525	\$200
Regular Registration (Aug 5 - Nov 1)	\$425	\$600	\$275
Late Registration (Nov 1)	\$500	\$675	\$350

CONFERENCE ANNOUNCEMENT

TUESDAY DINNER - Co-Hosted with HMPGA

Unglued: The Pleistocene Legacy and Climate Change Future of New York State's Landscape

Andrew Kozlowski, Ph.D., P.G.

New York State Geological Survey.

Abstract

New field mapping and subsurface investigations by the New York State Geological Survey support previous suggestions that New York State was glaciated multiple times during the Pleistocene. If the climate record preserved in the Greenland Ice Cores and in benthic organisms from marine deposits are comparable, New York State may have experienced as many as 20 glaciations. The erosion and deposition of repeated continental glaciers profoundly impacted the landscape of New York State. The relic glacial landforms in New York and elsewhere in the Great Lakes region archive the geologic processes during a much colder climate. However, prior to the landscape transformation during the Pleistocene the interaction of geologic structure and erosional processes developed drainage patterns on bedrock during the Paleogene and Neogene periods, building a unique physiography of questas and escarpments. Numerous large valley systems encouraged the direction of ice flow during glacial periods until ice sheets thickened and overrode the landscape. Expansive proglacial lakes developed before, during and after glaciation as meltwater became impounded by isostatic depression or ice-dams.

Fine-grained sediments deposited in former glacial lake basins can be extensive and exceed 122 meters in thickness. Laminated and rhythmic bedded silt-clay deposits typically have low shear strengths and are commonly prone to failure. At the end of the last glaciation as glaciers retreated and lakes drained, changes in base level resulted in the initiation of modern stream systems. Incision of streams responding to new base levels at onset of Holocene driven by meteoric waters likely triggered a period of active mass-wasting and landslide activity. However, that landscape eventually established a new equilibrium with Holocene climate and stream systems and hillsides stabilized.

Yet, the past few decades provide clues that perhaps a new climate-equilibrium is underway. More frequent and intense precipitation events strongly suggest that change from a warming climate will result in new landscape adjustments in the coming decades including increased landslides and slope-failures. The stabilized landscape of the Holocene that society has built over will adjust, creating extensive challenges to communities and infrastructure. Professional geologists will play an essential role to map hazard prone areas, educate the public, mitigate slope-failures, and help engineer solutions to a landscape that readjusts to a new climate reality.

Time: Social Hour	5:30 pm	Cost: Member	\$50
Dinner at	6:30 pm	Non-Member	\$60
Presentation	7:30 pm	Cost includes open bar, dinner and PDH credit	



Presentation will be worth 1 PDH credit.

More information can be found at www.NYSCPG.com/Geology-Days-2024



TRC ENVIRONMENTAL CORP
41 Spring Street, Suite 102
New Providence, NJ 07974
908-988-1700 Fax 908-464-3712

- Ground Water Investigation and Remediation
- Soil Investigation and Remediation
- Ground Water Supply Development
- Underground Storage Tank Investigation
- ISRA Compliance
- Environmental Site Inspection and Audits
- Brownfields Investigation and Permits
- Litigation Support and Expert Testimony

Employment opportunities available for Geologists and Engineers at all levels

Visit:
TRCCompanies.com
To View All Current Job Opportunities

45 YEARS
OF
ENVIRONMENTAL
SOLUTIONS IN
NEW JERSEY

GEI provides geotechnical, environmental, water resources and ecological consulting and engineering services. We provide these services from planning and design through construction and operations. Our clients include government agencies, institutions, industries, developers, utilities and professional service firms.

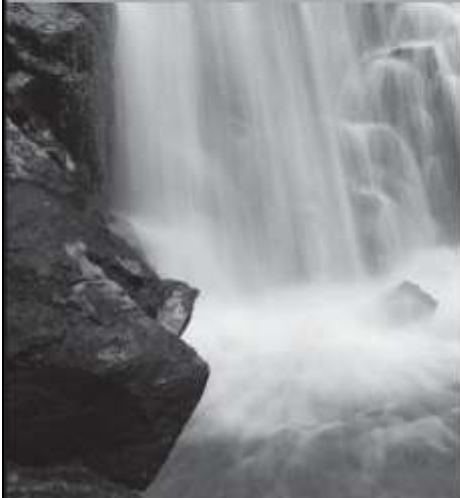


For more information
contact Bob Blauvelt at
973.873.7127
www.geiconsultants.com

GEI Consultants, Inc.
300 Broadacres Drive, Suite 100
Bloomfield, NJ 07003



DEFINING INNOVATION WITH SUSTAINABLE SOLUTIONS



Site Investigation and Remediation
Geotechnical/Earth Sciences
Sustainability
Brownfields Characterization and Redevelopment
Dams and Hydraulics
Environmental Infrastructure
Architecture
Civil
Transportation
Water/Wastewater
Structural
GIS/Information Technology
Construction Management/Design-Build



www.gannettfleming.com

James M. Barish, CPG, LSRP ■ Phone: (609) 584-9592 ■ Cell: (609) 385-5822
jbarish@gfnet.com ■ More than 55 offices worldwide
Suite 203, 3575 Quakerbridge Road, Hamilton, NJ 08619

ISO 9001:2015
CERTIFIED



*Providing Full Service Engineering, Planning and
Construction Expertise to Our Clients for Over 50 Years*

Imagine
What We Can Do for You!

CHA
www.chacompanies.com
800.836.0817

CONFERENCE ANNOUNCEMENT

FIELD TRIPS - Co-Hosted by NE-AIPG

Tuesday Field Trip

Stratigraphy, Structure, and the Mineral Waters of Saratoga Springs

Crystalline basement rocks of the Adirondacks are exposed in the northwestern part of the Saratoga Springs region. Overlying an early Cambrian unconformity are clastic rocks of the Potsdam and Theresa (Galway) Formations. These are overlain by late Cambrian and Ordovician limestones and dolomites of the Beekmantown Group, thought to be the principal aquifer rock for the mineral spring waters.

The aquifer rocks that hold the deep, carbonated spring water are from the Middle Ordovician Beekmantown Group limestones and dolomites. These rocks crop out along the southeastern margin of the Adirondack foothills and are between 100 and 650 feet below the surface in Saratoga Springs as indicated by review of published reports, deepening to the south-southwest along the trace of the Saratoga Springs-McGregor fault.

A review of historical well records indicates mineral water springs flow to the north and only within 200 feet of the mapped fault. Further, no Saratoga-type mineral springs were found west of the subject fault (Putman, 1978 and Putman and Young, 1985). These observations, combined with the possible southern extent of the fault system being buried by Silurian and Devonian sedimentary cover, suggests a southerly source of the mineral waters. The field trip will be led by Mark Williams, P.G. and Mr. Derek Erbak, P.G. will provide a detailed overview of the Old Red Spring, a walking tour of the flowing springs within downtown Saratoga Springs and the Saratoga Spa State Park.

Date: November 12, 2024

Time: Depart 8:00 am

Return 12:00 pm

Credits: 4 PDHs expected

Cost: \$25 to cover transportation



Wednesday Field Trip

The Albany Pine Bush: Globally-rare ecology built on a unique foundation of paraglacial sand dunes

The Albany Pine Bush Preserve and National Natural Landmark sits on one of the most extensive inland sand dune fields in the eastern USA. This dune field provides the foundation for the fire and frost dynamics that drive what is now one of the best remaining examples of an inland Pitch Pine-Scrub Oak barrens (PPSOB S1/G2). This globally-rare ecology in turn provides habitat for 114 rare animals including more than 70 NYS wildlife Species of Greatest need. Since 1991 management focused on reducing wildfire risk and improving ecosystem health (composition, structure, function) by restoring altered fire regimes and recovering the endangered Karner Blue (*Plebejus melissa samuelis*) has proven successful. An international team of geologists are currently working to refine our understanding of the origins of the dunes. The field trip will feature a guided walk through the dunes with Neil Gifford, Conservation Director for the Albany Pine Bush Preserve Commission, and highlight recent advancements in both cutting edge biodiversity conservation and paraglacial geomorphology.

Date: November 13, 2024

Time: Depart 8:00 am

Return 12:00 pm

Credits: 4 PDHs expected

Cost: \$25 to cover transportation

AIPG's Mentoring Program

Do you know AIPG has a Mentoring Program for AIPG Members at all levels of their careers?

Are you looking for advice as you start your career, or consider a career change, or retirement?

Are you enjoying a successful career and are able to provide advice or support to others as a Mentor?

AIPG's Mentoring Program is designed to encourage discussions between AIPG members.

You can participate in the program as a Mentor, a Mentee, or both!

For more details, visit

<https://aipg.org/page/MentoringProgram!>

AIPG's Career Center

Did you know AIPG has a Career Center?

Services include a job board for posting and searching for jobs, resume reviews, and more!

For more information, check their website at:

[https://aipg-jobs.careerwebsite.com/.](https://aipg-jobs.careerwebsite.com/)

(End)

**HALEY &
ALDRICH**

**Building communities.
Improving our infrastructure.**

Creating new possibilities with clients.

- Property development and brownfields reuse
- Remedial investigations, design and construction
- Environmental, health and safety management
- Energy facility and linear utilities development
- Underground construction risk management
- Sustainable design enhancement

25 Offices Nationwide • T. 617.886.7400 • HaleyAldrich.com



Steve Revell, CPG
President
Senior Hydrogeologist
Email: srevell@lagvt.com

163 Revell Drive
Lincoln, VT 05443
(802) 453-4384
FAX (802) 453-5399

RICHTER GEOLOGY PLLC

Dorothy Richter, P.G.
(NH, NY, PA, NC, KY, IL, MN)
President

603 231-7845
dorothy.richter@outlook.com
richtergeology.com

OVER TWO DECADES OF EXPERIENCE

GETTING IT DONE.

ENVIRONMENTAL SERVICES
CIVIL + LAND DEVELOPMENT
BUILDINGS + STRUCTURES

PVE-LLC.COM
(845) 454-2544
INFO@PVE-LLC.COM

PVE

HAGER-RICHTER

Geophysics for the Engineering Community

*National Reputation | Nationwide Practice
Take a Closer Look. You'll Like What You See.*

www.hager-richter.com

Main Office

8 Industrial Way—D10
Salem, New Hampshire 03079
T: 603-893-9944

NY / NJ Office

846 Main Street
Fords, New Jersey 08863
T: 732-661-0555

dba HR Geological Services in New York

CONFERENCE ANNOUNCEMENT

PRESENTER LIST

Presenter Name	Organization	Title
Frederick Stumm Ph.D., P.G.	U.S. Geological Survey	Updated Hydrogeologic Framework of Kings, Queens, and Nassau Counties, Long Island, NY
Andrew Clift, Ph.D., P.G.	NYS Geologic Survey	A Comprehensive Guide to New York's Subsurface Data through ESOGIS
Anthony Bollasina, P.G.	NYSDEC	NYS Efforts in Identifying PFAS in the Environment with Case Studies, Emphasis on Source Sites vs non Source Sites with Potential for Septic and Domestic Wastewater/Background Levels
Christopher Kelson, Ph.D., P.G.	Atlantic Testing Laboratories	Pyrite and Pyrrhotite in Shale, Fill Material, and Aggregate - A Potential Geotechnical Concern
Daniel Kelleher	Midwest GeoSciences	Implications to Groundwater Movement and Vertical Seepage Calculations Based on the discovery of a New Pre-Wisconsinin Sedimentary Sequence in the Upper Midwest
David Brogan, MS, P.E.	GeoStabilization International	Geotechnical Asset Management and Maintenance
Elliot Maker	REGENESIS	PFAS Source Area Treatment
Elliot Maker	REGENESIS	Passive VI Mitigation: Key Aspects for Design and Installation
Eric Greppo, P.E. and Others	NYSER	Panel: The Regulated Practice of Geology in New York State
Evan W. Filon	ARM Group LLC	Taking the Unknowns out of Complex Geology with Surface and Borehole Geophysics
Karen A. Cahill	NYSDEC	Part 375 Update
Guy Swenson, P.G.	Ramboll	Site Characterization: What Are We Sampling?
James Walden, P.G.	Wisconsin Department of Natural Resources	Investigation of the Conduit Vapor Intrusion Pathway
Jim Ridenour, P.G.	NYSDOH	Using Logratio Transformation, Mahalanobis Distance Evaluation, Descriptive Soil Properties and Land Use Information to Distinguish Representative Cases in Multipart Concentration Space
John Nadeau, P.G.	NYSOPG	A Common Sense Guide to Business Practices in New York (Ethics)

CONFERENCE ANNOUNCEMENT

PRESENTER LIST

Presenter Name	Organization	Title
Jonathan Kim, Ph.D., P.G.	VTDEC, Vermont Geologic Survey	Chemical Characterization of the PFAS-Contaminated Fractured Rock Aquifer (FRA) Beneath the Rutland-Southern Vermont Regional Airport
Josh Gowan	Alpha Geological Services, DPC	A Fractured Bedrock Aquifer Hydrogeologic Model Based on First Principles is Supported by Borehole Geophysics and Hydraulic Conductivity Testing
Josh Sandberg, P.G.	Sandberg Consulting, Inc	Well Plugging & Abandonment Challenges in New York State
Karl Backhaus	NYS Geological Survey	Geologic Mapping by the NYSGS: History, Modern Processes, and the Future
Lindsay Boone	Pace Labs	PFAS (POLYFLUOROALKYL SUBSTANCES) Method Options for Environmental Professionals - Pros and Cons
Mark Domaracki, P.G.	NYSDEC	Green and Sustainable Remediation: Expectations at DER Sites
Mary Gilstrap	IOGANY	State and Federal Guidelines and Petroleum (Oil and Gas Resources)
Matthew Dupes, P.G.	Alpha Geological Services, DPC	Root Cause Analysis and Associated Environmental Impacts of the Retsof Mine Collapse, Livingston County, New York
Michael Brophy	Amplified Geochemical Imaging, LLC	Passive Gas Sampling Technology for Environmental Applications
Michael Hecker, Esq.	Hodgson Russ, LLP	Part 375 Updates
Nicholas Valkenburg, P.G.	Valkenburg Professional Geologist, PLLC	Emerging Contaminants in Groundwater
Paul Griggs, P.G.	Griggs-Lang Consulting Geologists, P.C.	A Snapshot on the State of Mining in New York State and the Role of Geologists in the Mining Industry
Paul R. Pickering	Aeroqual Ltd	How Advanced Community Air Monitoring Approaches Support Complex Brownfield Cleanup Programs
Steven M. Scharf, P.E.	NYSDEC	Love Canal: Before, Then, and Now
Thomas Festa, P.G.	NYS DOT	NYS DOT Materials Method 29 - Aggregate Source Qualifications Procedures for NYS Public Works Projects

(End)

(Grace Levins continued from page 33)



**GRACE (ON THE LEFT)
AND SOME OF THE
MANY PLACES
SHE HAS TRAVELED
THIS YEAR.**

(Grace Levins continued on page 45)

(Grace Levins continued from page 44)

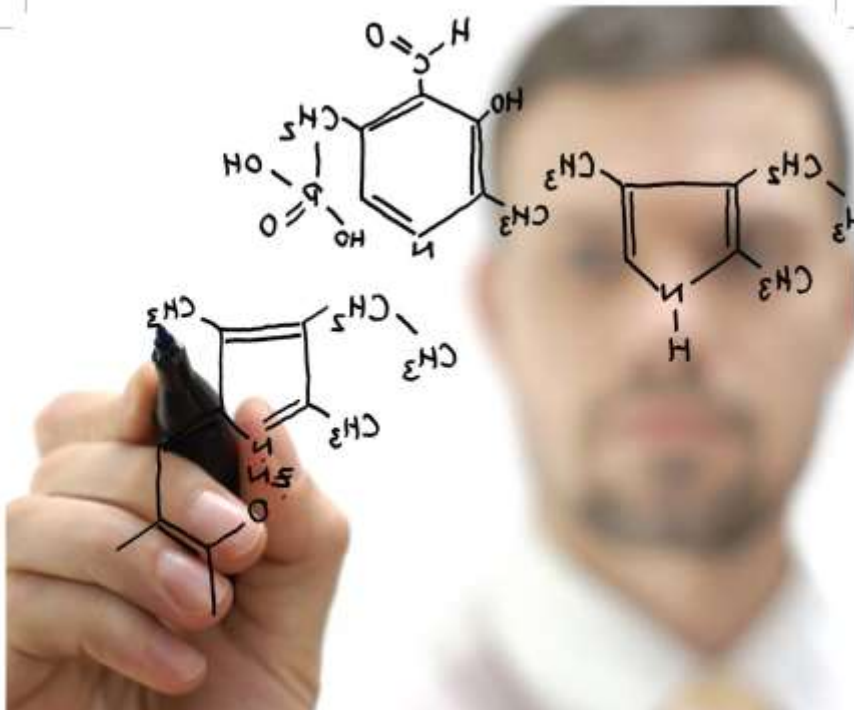


Next up for Grace is moving to Ireland to pursue an MSc in the Coastal and Marine Environments program at the University of Galway, as Grace was a recipient of the Government of Ireland International Education Scholarship. After that, a PhD is likely in the cards, but after the experience of traveling for so long with the Watson Fellowship, she is going to see where her interests focus over the next phase of her early career.

THANK YOU FOR
SHARING THIS
INSPIRING AND
UNIQUE
EXPERIENCE
WITH ALL OUR
READERS, GRACE!



(End)



Solutions to complex challenges

A continually shifting world makes any engineering design solution difficult, often overwhelming. We help you overcome these challenges.

First, we start with you – defining true value and a successful outcome. With a deep understanding of the nexus between regulatory, technological and environmental drivers, we deliver certainty on cost-effective projects and programs that meet and exceed your goals.

Together we can do a world of good.

www.arcadis-us.com

Two Huntington
Quadrangle Suite 1510
Melville, NY 11747
631 249 7600

Imagine the result

 **ARCADIS**
Infrastructure | Water | Environment | Buildings

FPM Remediations, Inc.

An **Olgoonik** Company



8(a) Certified



Historically Underutilized Business Zone



- ◇ Self-Perform Investigation/Remediation Activities at Sites Impacted by Environmental Contaminants and Munitions
- ◇ Specialize in Performance-Based Contracting
- ◇ Certified/Licensed Engineers, Geologists, Scientists, Geophysicists, and Unexploded Ordinance Experts
- ◇ 20+ Years of DoD Experience
- ◇ DoD Advanced Geophysical Classification Accreditation Program (DAGCAP) Certified



FIND OUT MORE AT: WWW.FPM-REMIEDIATIONS.COM

Layne



Resource Development and Maintenance



Water Treatment

Layne Christensen's well-trained field crews and experienced staff work with clients to:

- Develop new water sources
- Rehabilitate existing wells, through either chemical or mechanical processes
- Provide pump service (new sales, repairs and installation)

Layne Christensen's professional engineers can assist in determining an appropriate treatment technology. We then fabricate systems scaled to each client's requirements.

Experienced • Equipped • Committed

... Since 1882

New England • (978) 937-2242

New York • (518) 295-8288

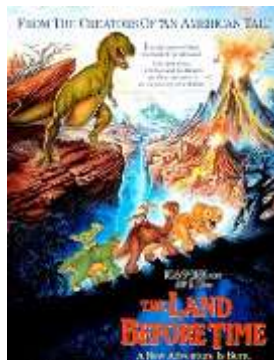
Long Island • (631) 218-0749

From The Editor's Desk



The beginning of autumn reminds me of school, the leaves falling, cooler weather, and dinosaurs—yes, dinosaurs. My brother was always obsessed with dinos since he was a young child and saw *The Land Before Time*. My mom would buy him a new T-Rex shirt every school year, so most first day of school photographs have him in a dino shirt.

As I was researching some current news to add to our Autumn Newsletter, I discovered two articles about recent dinosaur fossil finds, and I knew I had to include them (see [Pages 49 and 52](#)).



I hope you find the articles interesting and do not mind a little nostalgia from a woman with multiple English degrees, as most of my geology knowledge is from editing reports at Roux. Thank you for your patience! Enjoy autumn! -Kim

(End)

NE-AIPG is working to keep you informed.

Although NE-AIPG is an all-volunteer group, we do our best to keep the Event Calendar and content on the <https://ne-aipg.org/> website up to date, and to send emails with upcoming events and announcements.

On the Northeast Section's website, you can also find archived Newsletters, links to AIPG's job board and mentoring program, and information on the Angelo Tagliacozzo Memorial Geological Scholarship (ATMGS) and on Advertising in our Newsletters. Please check the website regularly, and watch your emails for updates!

20,000-Year-Old Columbian Mammoth Bones Discovered in Texas

Smithsonian Magazine August 28, 2024 By Sarah Kuta

Sabrina Solomon was fishing with a friend in Central Texas earlier this summer when she stumbled upon the remains of a 20,000-year-old mammoth—literally.

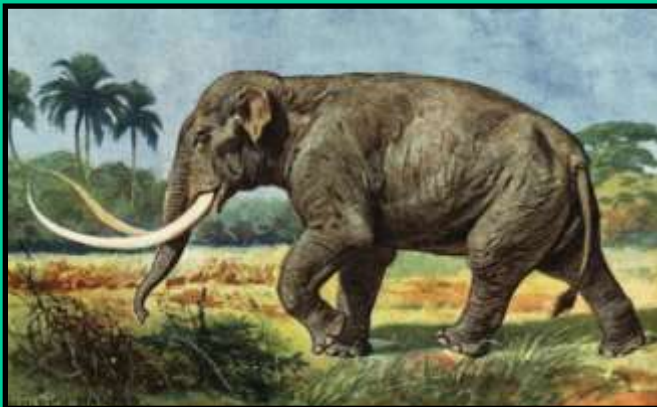
“I was walking up that hill with all the clay, it was really wet and slippery and I ended up falling, coming face to face with the specimen,” Solomon tells KWTX’s Isabella Quintanilla.

When Solomon took a closer look at the object sticking out of the ground, she realized it probably wasn’t an ordinary rock—it looked more like a spine. So, she got in touch with local authorities, who contacted experts at Tarleton State University.

Kris Juntunen, a geoscientist at the university, traveled to the site and saw four to five inches of tusk protruding from the dirt. He recruited students, as well as staff from the Waco Mammoth National Monument and the U.S. Army Corps of Engineers, to help excavate the remains.

Not long after the group started digging, they found additional fossils: part of what is likely a skull, spine bones and part of an arm bone. They determined the bones belonged to a 40-year-old male Columbian mammoth, a large, extinct creature that once roamed North America during the Pleistocene (2.6 million to 11,700 years ago).

Once all of the remains are safely removed, they’ll be transported to Tarleton State for further study and preservation.



Columbian mammoths were larger and less hairy than woolly mammoths.

Picture from:
Florilegius /
Universal Images
Group via Getty
Images

(Mammoth continued from page 49)

The exact location of the dig site is being kept secret to prevent tampering. Two of the mammoth's teeth were removed from the site just before the team started excavating. But they were later returned to the Bosque County Sheriff's Office. Columbian mammoths (*Mammuthus columbi*) lived throughout the continent, possibly meandering as far south as Costa Rica. They stood up to 13 feet tall at the shoulders and weighed up to 20,000 pounds. Columbian mammoths were larger than woolly mammoths, and they were mostly hairless.

For years, paleontologists theorized that Columbian mammoth evolved before woolly mammoths. But, in 2021, a team studied DNA from mammoth molars that were 700,000, 1.1 million and 1.2 million years old. The analysis showed that Columbian mammoths were a hybrid species—a cross between woolly mammoths and another, unknown mammoth lineage.

Columbian mammoths, woolly mammoths and mastodons began disappearing toward the end of the last Ice Age, with the last known surviving group dying on Wrangel Island off the Arctic coast or modern-day Russia some 6,000 years ago. Their modern descendants—African and Asian elephants—live on today.

Many Columbian mammoth fossils have been unearthed in Central Texas. In 2015, the Obama administration established Waco Mammoth National Monument, a five-acre swath between the Bosque and Brazos rivers. The national monument protects the first and only known evidence of a nursery herd of Columbian mammoths, a group of at least six adult females and ten juveniles. The animals all died in a single, catastrophic event—possibly, a flash flood or a mudslide.

In addition to Texas, Columbian mammoth fossils have been found in Nevada, California, Florida, Minnesota, Washington, South Dakota and other states.

“It’s so hard to imagine them walking through your backyard, so every time we find one in your backyard, it kind of triggers the imagination,” Lindsey Yann, the paleontologist at Waco Mammoth National Monument, tells KWTX. “And even a small find like this and the other finds in this area, they really tell us about the paleontological history of this area.”

(End)

Have an idea for a Newsletter article?

We are always more than willing to
incorporate our members' ideas and
experiences into the Newsletter!

Submit your ideas to Kim Burger at:
kburger@rouxinc.com

Tectonic

Practical Solutions. Calculating Success.



www.tectonicengineering.com

800.829.6531

NY. NJ. CT. PA.

- NJ Licensed Site Remediation Professional (LSRP) Services
- Phase I/Phase II Environmental Site Assessments
- Industrial Site Recovery Act Services
- Tank Closures & Spill Investigations
- Vapor Intrusion Studies & Mitigation
- Remedial Design of Contaminated Soil/ Groundwater
- Terrestrial Ecological Evaluations
- Mold, Asbestos & Lead Management
- Subsurface Investigations & Geotechnical Engineering
- Geotechnical Instrumentation & Monitoring
- Vibration & Noise Monitoring
- Retaining Wall & Excavation Support Systems Design



Hgi

HAGER GEOSCIENCE, INC.

Innovative solutions to Subsurface Problems

Almost 30 Years of Geophysical
Consulting Services for
Engineering, Environmental,
and Infrastructure Projects

PH +1-781-935-8111

hgi@hagergeoscience.com

Jutta Hager, Ph.D., P.G., President

jhager@hagergeoscience.com

Brazilian Scientists Race to Recover Fossils Unearthed by Record Floods

September 3, 2024 Yale Environment 360


Scientists in Brazil are racing to gather fossils uncovered by recent heavy floods before they are destroyed.

In May, record flooding washed away soil in parts of southern Brazil, revealing the remnants of at least 35 ancient creatures. Among them was a 233-million-year-old dinosaur skeleton, possibly the oldest ever discovered, belonging to the two-legged predator *Gnathovorax cabreirai*.

But the thrill of such finds has been tempered by the growing urgency to recover fossils before they are lost. Fossil can disintegrate in water, which is abundant in the wake of floods. Four of 29 fossil sites are still flooded, while others have been battered by summer rainfall, *Nature* [reports](#).

The tiniest bones are of greatest concern, as they are the most likely to crumble in water or to be washed away by rain. And such bones, whether they belong to creatures big or small, are a vital record of prehistoric life. For instance, ear bones, which can measure just a fraction of an inch, reveal a great deal about the intelligence of ancient creatures.

Speaking with *Nature*, Leonardo Kerber of the Federal University of Santa Maria said, “If paleontologists are not there to collect material when it starts showing, we risk losing some of it forever.”



A Gnathovorax cabreirai bone uncovered by flooding in São João do Polêsine, Brazil.

Picture by Rodrigo Temp Müller / Cappa / UFSM

(End)

WE WANT YOU TO SHARE YOUR NEWS!

With over 550 Geologists in the NE Section of AIPG, we want to know what has been happening in YOUR workplace and life .

Help us by sending a short blurb to publisher Dick Young at ryoungnj@aol.com or editor Kim Burger at kburger@rouxinc.com. Your story will be part of the next Newsletter.

Need an idea?
Just email Dick or Kim!

**We cannot
wait to hear
about your
news!**



*NE-AIPG Newsletter
Feature Site:
Saratoga Spa State Park
Saratoga Springs, NY*





Environmental laboratory solutions provided for your most demanding applications.

The 6th largest environmental testing laboratory in the United States and the largest privately family owned laboratory in the country with more than 50,000 square feet of state-of-the-art laboratory facilities offering:



Air



Sediment & Tissue



Forensic Petroleum



Regulatory Soil



Regulatory Water



Emerging Contaminants

For more information please contact us at 800-624-9220
info@alphalab.com
www.alphalab.com

Westborough, MA | Mansfield, MA | Brewer, ME | Portsmouth, NH
Mahwah, NJ | Albany, NY | Buffalo, NY | Rochester, NY | Syracuse, NY | Holmes, PA

(NOM continued on page 63)

Support Our Advertisers and Sponsors!

The Executive Committee reminds all our members to support the companies that advertise in this Newsletter and generously sponsor our meetings. Their support represents a major contribution that helps the Northeast Section continue its mission to promote the profession and build the cornerstone of our Section, the *Angelo Tagliacozzo Memorial Geological Scholarship Perpetual Trust Fund*. It is our advertisers and sponsors who make our Newsletter so successful and well-distributed, reaching more than 600 members across eight states.

Please let our advertisers and sponsors know you appreciate them by working with these companies whenever possible. Be sure to personally acknowledge their support when you speak with their representatives, and mention you saw their ad or sponsorship in our Newsletter.

Thank you to all our advertisers and sponsors!

SOIL
BORING

(203) 758-5817 Phone
(203) 758-0822 Fax

ROCK
CORING

Portable
Skid/Propane
Track
Truck Rigs



**General
Borings,
Inc.**
SUB-SURFACE INVESTIGATIONS

Monitor Well
Specialists
OSHA
Certified

OBSERVATION
WELLS

P.O. Box 7135
Prospect, CT 06712

CONCRETE
CORING

May 2024 MEETING MINUTES NE SECTION – AIPG
EXECUTIVE COMMITTEE MEETING
May 6, 2024

Kelly Weyer*	Michael Grifasi*	Lou Russo	Scott Tucker*
Jennifer Rhee*	Trevor Gowan*	Dennis McGrath	Scott Hulseapple*
Laurie Scheuing*	Calvin Prothro	Dick Young	Stacy Stieber
Adam Kaiser	Cheryl Neary	Mitchell Ward*	Martin Derby

Called to order at 4:04 pm

Welcome Statements and Announcements

- ◆ President Elect 2024 Position Open.

Secretary’s Report (Minutes):

- ◆ Secretary presented March ExCom minutes, with no additional comment.
- ◆ Vote - Discussed March ExCom Minutes
- ◆ Suggested a correction to the spelling of “Board of Trustees;” suggestion was agreed upon.
- ◆ Laurie Scheuing made motion to approve minutes once revised. Michael Grifasi seconded the motion. Vote to approve minutes once revised passed.

Treasurer’s Report

- ◆ Treasurer presented March and April Section and Angelo Fund financial reports.
 - ◇ Chase checking account remains above the minimum balance necessary to avoid fees.
 - ◇ We are relatively low on assets as we await dues from National. No indication of when we will expect dues from National. They used to provide them in March.
 - ◇ Vanguard fund has decreased in value from last month but is still above value from pre-scholarship sales.
- ◆ Treasurer’s Comments
 - ◇ All checks for scholarships are prepared to be sent on 5/7.
 - ◇ Anticipated net gain from Geology Field Day event. Quantity not confirmed yet.
- ◆ Ongoing items: File new NJ agent and physical address for ATMGS in 2024; Decision on cancelling Hostway in 2024; Consider opening Venmo or online payment to facilitate payments.
 - ◇ Jeff Frederick agreed to be the new NJ agent, but not yet set up.
 - ◇ Scott Hulseapple contacted the current web host to confirm that they handle everything (including domain name, domain name posting, and web posting), and therefore, we don’t need to retain Hostway.

(Minutes continued on page 58)

SAFETY. QUALITY. PEOPLE. EQUIPMENT.

GLOBAL LEADERS IN SITE CHARACTERIZATION



Seismic Cone Penetration Testing (SCPTs)



Geophysical Testing



Over Water



In-Situ Testing (eVST, PMT, DMT)



Monitoring and Instrumentation



Drilling and Sampling

BETTER INFORMATION
BETTER DECISIONS

CONETEC.COM

CONETEC

CSIG

ENVIRONMENTAL CONSULTANTS

- ✓ property transfer site assessments
- ✓ groundwater development, management, protection, permitting
- ✓ UST closures and investigations
- ✓ litigation support

Carol S. Graff, CPG-06429
109 Renfrew Avenue
Trenton, NJ 08618-3335

Phone: 609-393-4442
FAX: 609-393-5999
E-mail: cgraff5297@aol.com

(Minutes continued from page 56)

Reports from Committees

- ◆ Scholarship: Committee Chair gives update.
 - ◇ Committee Chair contacted all applicants informing them about the results .
 - ◇ Seeking committee members to review applications next year.
 - ◇ Discussion: Consider capping number of applicants.
- ◆ Publications
 - ◇ Content for 2024 Autumn (Sept) Newsletter – July 19 deadline for content to Editor.
 - ◇ Spring Newsletter not yet complete. Anticipated May 15th. Need additional content from executive committee.
 - ◇ Updated directory expected May 8th.
 - ◇ Update on Advertising Sales & Income.
 - ◇ Ongoing items - Consider ISSUU subscription for viewing and archiving newsletters.
- ◆ Meetings/Webinars/Events Committee
 - ◇ 3/12 – email vote was approved to provide \$50 travel assistance to students travel to the meetings in groups of 5 or more .
 - ◆ Assistance distributed to one group. One qualified group declined to accept the assistance.
 - ◆ Michael Grifasi distributed the assistance and will be reimbursed by CNYAPG.
 - ◇ 2024 Spring/Fall Meetings
 - ◆ Report - 4/17/24 Wednesday – Field Trip, Spring Meeting - and Student Expo w/HMPGA.
 - ◆ Report - 4/26/24 Friday - Geology Field Days w/CNYAPG, Syracuse, NY.
 - ◇ Upcoming Events
 - ◆ 10/11/24, tentative - Friday - Fall in-person Meeting, Connecticut
 - Consider rescheduling meeting to 10/4/24 or a Wednesday due to long weekend 10/12-10/14.
 - ◆ PDH Webinars – Update on 2024 schedule and presenters, w/PDH \$25/\$30, no PDH \$20/\$25.
 - Michael Grifasi to follow up with potential presenter
 - Looking into other presenters to provide an opportunity in the fall or winter
 - ◆ Planning field trips for NYSCPG Geology Days, Tuesday November 12th and November 13th
 - ◆ Ongoing items - Consider gift for presenters

(Continued on page 60)



TRAP & TREAT®

BOS 100®

BOS 200®

CAT 100

THE ORIGINAL AND MOST WIDELY APPLIED
**ACTIVATED CARBON
BASED IN-SITU
REMEDICATION
CHEMISTRIES
IN THE WORLD**

The RPI Group approach includes high density site characterization with pro bono laboratory support, expert project design, and professional installation.

19
YEARS

Celebrating our 19th year of unprecedented success returning environmentally compromised properties to their highest and best use.

Contact Derek Pizarro (610-517-8242, dpizarro@astenv.com) to learn if the RPI Group Approach to in-situ remediation is an option for your site.

(Minutes continued from page 58)

- ◆ Nominating Committee — ExCom and Committees
 - ◇ Need to fill/extend Northeast Section ExCom positions for 2025.
 - ◆ President, President-Elect (VP), Secretary, Treasurer, 3 At-Large Positions.
 - ◆ Target date for nomination deadline – July 1, 2024.
 - ◇ Section Screening Committee – need volunteers to review applications.
 - ◆ Charles Rich is the current Chair and can continue temporarily.
 - ◇ Scholarship Committee, and other committees need members.
- ◆ Student Outreach/Mentoring/Student Chapters
 - ◇ Need to contact previous chapters to determine interest.
 - ◇ Dormant Student Chapters listed on AIPG website, consider contact or updating info.
 - ◆ City University of New York at Brooklyn College, Brooklyn, New York
Founded in 2018
Chapter Sponsor: Jennifer Rhee (nee Becker), MEM;
Faculty Sponsor: Matthew Grab
 - ◆ New Paltz State University of New York, New Paltz, New York
Founded in 2017
Chapter Sponsors: Christopher Brown, CPG, and Gordon Magenheim, CPG;
Faculty Sponsor: Dr. Shafiul Chowdhury
 - ◆ SUNY Geneseo, Geneseo, New York
Founded in 2015
Chapter Sponsor: Dennis McGrath, CPG;
Faculty Sponsor: Nicholas Warner
 - ◇ Possible collaboration with regional geology organizations for campus visits.

Correspondence

- ◇ A student asked about potential of retaining student membership status during gap-years between degrees.

Old Business and New Business

- ◇ Website is being updated.
- ◇ Will need to consider succession planning for NE-AIPG publications and advertising.
- ◇ Consider defining responsibilities of Executive committee and board member positions beyond bylaws.

Closing Statements and Final Thoughts

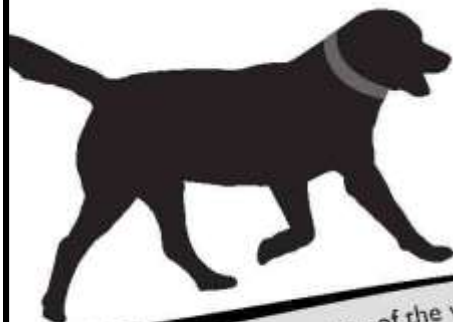
- ◆ October meeting date.
- ◆ Look for executive committee members .
- ◆ Next ExCom meeting – Tuesday 7/9, 4-6pm, Zoom.

Meeting adjourned at 5:21 pm.

(End)



Eastern Analytical, Inc.
professional laboratory & drilling services



GROUNDWATER
SOIL & SLUDGE
WASTEWATER
STORMWATER
DRINKING WATER
SURFACE WATER

we're with you every step of the way | www.eailabs.com | 800.287.0525

SOME AIPG THINGS YOU CAN DO

What's going on out there? Let your colleagues know what you are working on, your new position, or a new company.

Simply e-mail a paragraph or more to:
kburger@rouxinc.com

Become active in your section.
Attend one of our meetings.

For details, simply e-mail info@ne-aipg.org

Join our Executive Committee. We always have openings for creative, committed Geologists wanting to make a difference, and not much is asked of your time. Think about putting it on your resume!

For more info, simply e-mail info@ne-aipg.org



GeoVISION™ BOREHOLE VIDEO CAMERA SYSTEMS

**Hand Reel to 1000 Feet, Electric Winch to 2000 Feet
Joystick-Controlled Pan Tilt or Dual View Cameras**



Bore Diameters From 1-Inch To Mine Shafts

sales@alleghenyinstruments.com
www.alleghenyinstruments.com

800-255-1353
802-626-5302



Serving Southern New England and Eastern New York

Connecticut Test Borings, LLC

Geotechnical and Environmental Drilling

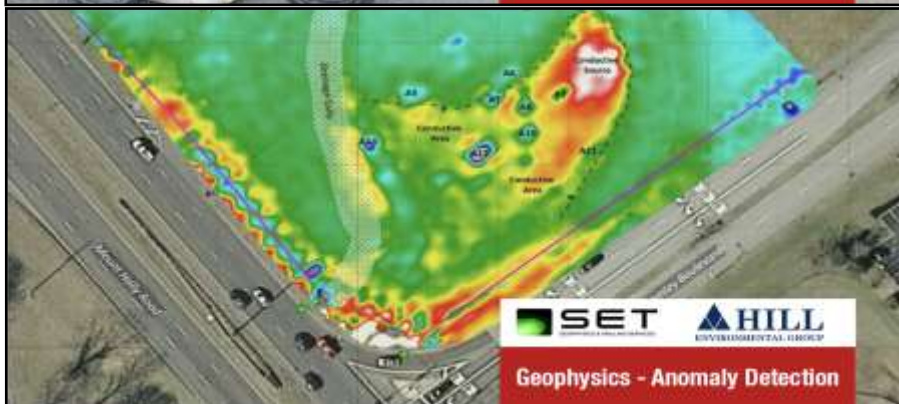
- ◆ **Hollow Stem Auger Drilling**
- ◆ **Soil Sampling - Rock Coring**
- ◆ **Monitor Well Installations**
- ◆ **Direct Push (Geoprobe®) Sampling**



www.connecticuttestborings.com • 203-888-3857 • fax 203-888-0655 • ctbllc@sbcglobal.net



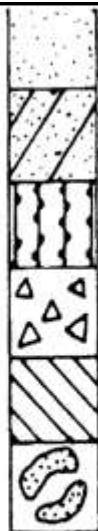
Welcomes SET and Hill Environmental



CARL VERNICK, P.E.
President

SOIL MECHANICS DRILLING CORP.

3770 MERRICK ROAD • SEAFORD, L.I., NEW YORK 11783
(516) 221-2333



Test
Borings

3770 Merrick Road
Seaford, New York 11783
Phone (516) 221 - 7500
Fax (516) 221 - 0254

SOIL MECHANICS

Environmental Site Assessments
Geoprobe Environmental Sampling
Inspection-Testing-Drilling

Carl Vernick P.E.
President

MB DRILLING



MB Drilling has a large, multi-disciplined drilling fleet that provides a variety of drilling techniques to serve our clients.

Art Becker
ABecker@MBDrillingLLC.com

Brian McGuire
BMcGuire@MBDrillingLLC.com



609.294.1110
MBDrillingLLC.com

Fast & Accurate Surface and Borehole Geophysics

Acoustic & Optical Televiewer Logging

Borehole Video & Geophysical Logging

Multi-Electrode Resistivity Imaging

Seismic Refraction & Reflection

Radar, Magnetics, EM & VLF

Do
More
than
Scratch
the
Surface...

G E O P H Y S I C A L A P P L I C A T I O N S

I N C O R P O R A T E D

Holliston, MA • 508-429-2430

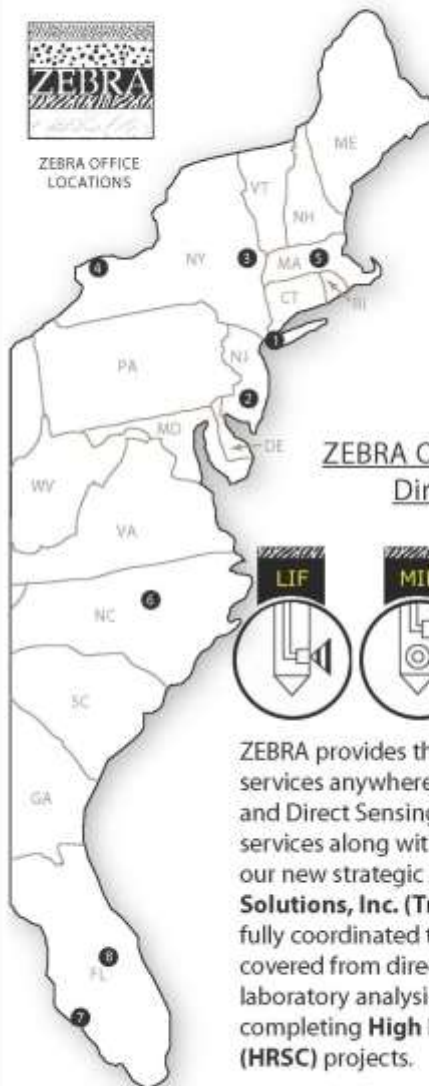
Ask about our geophysical instrument rentals

ZEBRA Environmental Corp.

Providing Subsurface Sampling, Injection and Data Collection
for Environmental Professionals Since 1992



ZEBRA OFFICE
LOCATIONS



Headquarters:
NYC, NJ &
Southern
CT Area

1 LYNBROOK, NY
516-596-6300

2 JACKSON, NJ
732-275-8333

Upstate NY &
New England

3 ALBANY, NY
518-355-2201

4 NIAGARA FALLS, NY
716-297-6567

5 UXBRIDGE, MA
508-581-9880

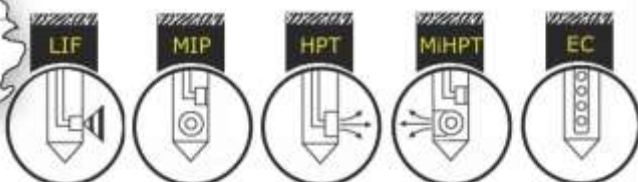
Southeast
Region

6 CARY, NC
813-626-1717

7 TAMPA, FL
813-626-1737

8 Orlando, FL
813-626-1717

ZEBRA Offers The Widest Range of Direct Sensing Services:



ZEBRA provides the widest range of Geoprobe/ DPT services anywhere, including a toolbox full of Injection and Direct Sensing systems. ZEBRA is now offering **UVOST** services along with **EC, MIP, MiHPT, CPT, MIP/CPT**. With our new strategic partnership with **TRIAD Environmental Solutions, Inc. (TriadES)** we are able to offer our clients a fully coordinated team of professionals. We have you covered from direct sensing to quantitative on-site laboratory analysis with DPT operators experienced in completing **High Resolution Sites Characterization (HRSC)** projects.

1-800-PROBE-IT

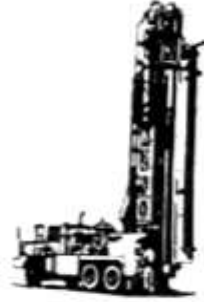
WWW.TEAMZEBRA.COM

BOYD ARTESIAN WELL CO., INC.

We design, manufacture and install round holes!

GEOHERMAL WELLS
WELL ABANDONMENT
ROTARY & PERCUSSION DRILLING
WELLS REPAIRED & DEEPEMED
COMPLETE WATER SYSTEMS
HYDROGEOLOGICAL CONSULTING
MONITORING WELLS

SPLIT SPOON SAMPLING
EXPLORATORY DRILLING
HYDROFRACTURING
IRRIGATION WELLS
SPECIALTY DRILLING
GRAVEL WELLS
SITE ASSESSMENTS



CARMEL, NY

(800) 321-2693

WWW.BOYDARTESIANWELLCO.COM

**Your FULL COLOR
advertisement could be
right here!**

**Contact Advertising
Manager Richard Young
at ryoungnj@aol.com**

Site & Subsurface
Investigations

Geotechnical &
Environmental
Site Investigations

SOIL TESTING, INC.

- Test Boring - Core Drilling
- Monitoring Wells
- Micro Piles
- Helical Piers

53 Years of Drilling Services

140 Oxford Road, Oxford, CT 06478

1-800-388-4473

(203) 888-4531

fax (203) 888-6247



AARCO Environmental Services Corp.

Premier Drilling Company



AARCO Environmental Services Corp. is a premier full service environmental contracting company. Our expertise includes a wide variety of drilling services:

*Environmental Drilling, Geotechnical Drilling
Hollow Stem Auger, SONIC Drilling, Air
Rotary Drilling, Mud Rotary Drilling, Well
Installation, Well Decommissioning, Chemical
Injection, Direct Push, Remote Access,
Truck and Track mounted rigs.*

NY & NJ Licensed



AARCO Environmental Services Corp.

50 Gear Avenue, Lindenhurst, NY 11757

Ph: (631) 586-5900 Fx: (631) 586-5910

www.aarcoenvironmental.com

NEW ENGLAND BORING CONTRACTORS OF CT., INC.

129 KREIGER LANE, GLASTONBURY, CT 06033

THE RIGHT EXPERIENCE, THE RIGHT EQUIPMENT, THE RIGHT COMPANY

Serving New England, NY & NJ

- Test Borings
- Monitor Wells
- Construction Drilling
- Multi-Rig Capabilities



www.newenglandboring.com

(800) 410-5550 • (860) 633-4649 • FAX: (860) 657-8046

What is AIPG's Mission?

The mission of the Institute shall include:

- ◆ Advancing the geological sciences and the profession of geology;
- ◆ Establishing qualifications for professional geologists;
- ◆ Certifying the qualifications of specific individual member geologists to the public;
- ◆ Promoting high standards of ethical conduct among its members and adjuncts and within the profession of geology; and
- ◆ Representing and advocating for, the geological profession before the government and the general public.

Want to reach more than 800 clients?
Then ADVERTISE!

Contact Dick Young 973-335-2289 or email
RYoungNJ@aol.com **to get your company's**
advertisement in the newsletter.

We offer all size ads from full page to business card
size and full color to black-and-white.



"We look into the earth"

PENNSYLVANIA DRILLING CO.

FOUNDATION TESTING	INCORPORATED 1900
MONITORING WELLS	
DAM DRILLING	281 ROUTE 30
ENVIRONMENTAL WORK	IMPERIAL, PA 15126
"PENNDRILL" DRILLING SUPPLIES	PHONE 724-695-2400
MONITORING WELL SUPPLIES &	FAX 724-695-2455
MANUFACTURING	800-245-4420

www.pennsylvaniadrillingco.com

SB CHURCH

WELL & PUMP SERVICES SINCE 1886

49 Great Hill Road, Oxford, CT 06478

203.888.2132

www.sbchurchco.com

GET TO THE SOURCE... THE FIRST TIME!



with Horizontal Remediation Wells

Some of the benefits:

- No business interruption during installation
- Maximum exposure to contaminants
- Cost efficient
- Reduced maintenance equipment, and operations cost.

And a few of the applications are:

- Horizontal Air Sparging
- Horizontal Soil Vapor Extraction
- Horizontal Bio Remediation
- Horizontal Soil Sampling
- Chemical Oxidation
- And many more...

DIRECTIONAL
Technologies, Inc
Horizontal Directional Drilling Services

203.294.9200

www.directionaltech.com | Email: ksequino@directionaltech.com

PIGGYBACKING: SERVICE EXPANDED FOR NE/AIPG ADVERTISERS!

The NE/AIPG Newsletter has again expanded its Piggybacking options offered to Advertisers. Advertisers can include promotional flyers or brochures along with NE/AIPG's normal distribution of the Newsletter.

Piggybacking gives NE/AIPG Advertisers a cost-effective way to get their promotional material into the hands of NE/AIPG's targeted audience of decision-makers. That audience encompasses over 600, including ~500 NE/AIPG Members and Applicants throughout New York, New Jersey, and the six New England states, as well as ~40± AIPG National and Section Officers, plus over 60 Advertisers, and others. NE/AIPG Members benefit from keeping current on available and innovative products and services.

Piggyback Rates for digital issues (see <http://issuu.com/neaipg/docs>):

1. A "Full Page" (~8" high by 5" wide) Space in Full Color costs \$125 per issue.
2. A "Double Full Page" (~8" high by 10" wide) Space in Full Color costs \$225 per issue.
3. A "Quad Full Page" (2 Doubles of ~8" high by 10" wide each) Space in Full Color costs \$425 per issue.

To schedule your Piggyback promotion, or to learn more, just call Dick Young at 973-335-2289 or e-mail RYoungNJ@aol.com.



Maine Test Borings

18 Mack Lane
Hermon, ME 04401

Jon Rudnicki

Ph: (207) 848-7041
Ph: (800) 698-9142
Cell: (207) 659-1749

Fx: (207) 848-7042
www.mainetest.com
jon@mainetest.com

(DSP continued from page 18)



WHERE:

Dinosaur State Park



Dinosaur State Park (DSP)
480 Wood Street, Rocky Hill, CT 06067

**SPONSORSHIP
OPPORTUNITY**
NORTHEAST-AIPG
~Fall Meeting~

WHAT: NE-AIPG Fall Meeting - An Evening at Dinosaur State Park -After-hours tour of DSP, socializing in the Exhibit Center while enjoying New Haven Pizza cooked onsite and an assortment of beverages, and ending the evening with a technical talk.

WHEN: Friday, October 11th, 2024 - 4PM TO 8PM

SPONSORSHIP OPPORTUNITY
NORTHEAST SECTION OF THE AMERICAN INSTITUTE
OF PROFESSIONAL GEOLOGISTS (NE-AIPG)
Fall Meeting - Friday, October 11th, 2024
An Evening at Dinosaur State Park, Rocky Hill, CT

Sponsorship Registration - Due by Friday, October 4th, 2024

Check <https://ne-aipg.org/> for more event details.

JURASSIC LEVEL SPONSORSHIP.....**\$150.00**

INCLUDED IN SPONSORSHIP

- ✓ One registration for the event (although a registration is included, attendance is not required for a Sponsorship).
- ✓ One PDH for the technical talk (pending MSEDG approval for PE and Design Professionals, must be in attendance for the entire talk).
- ✓ Company logo in marketing materials, such as flyers, emails, on the NE-AIPG website, and displayed during the meeting.
- ✓ Acknowledgement at the meeting and in the NE-AIPG's quarterly newsletter.

MESOZOIC LEVEL SPONSORSHIP.....**\$300.00**

INCLUDED IN SPONSORSHIP

- ✓ One registration for the event (although a registration is included, attendance is not required for a Sponsorship).
- ✓ One PDH for the technical talk (pending MSEDG approval for PE and Design Professionals, must be in attendance for the entire talk).
- ✓ Company logo in marketing materials, such as flyers, emails, on the NE-AIPG website, and displayed during the meeting.
- ✓ Acknowledgement at the meeting and in the NE-AIPG's quarterly newsletter.
- ✗ Company introduction at the meeting. This is not intended to be a full company presentation, but rather a five minutes will be allowed for a representative to give a brief introduction to the company and services. Meeting attendance is not required for this Sponsorship. If preferred, NE-AIPG could read a few sentences about the company, if provided in advance.

- > You can register and pay for the Sponsorship online at <https://ne-aipg.org/>
- > To be invoiced, please check the box on this form. You can pay the invoice online or by check.
- > This sponsorship form can be emailed to Kelly Weyer at kweyer@aipg-ny.org, or you can send an email with any questions or for more information.

Sponsorship Level _____

REGISTER AND PAY ONLINE

PLEASE SEND AN INVOICE

Name _____

Organization _____

Mailing Address _____

Phone _____ E-mail _____

THANK YOU for the support!



GEOD CORPORATION

AERIAL PHOTOGRAMMETRY • LAND SURVEYING • SUE

GEOD OFFERS YOU:



Photogrammetric Mapping • GIS Base Mapping



Subsurface Utility Mapping



Land & Engineering Surveying



Construction Surveys



Laser Scanning

24 Kanouse Road, Newfoundland, NJ 07435
Telephone: 973-697-2122 ■ Fax: 973-838-6433
Email: marketing@geodcorp.com
Website: www.geodcorp.com



***Specializing Exclusively in
Land, Marine, and Borehole Geophysics***

TECHNIQUES

Ground Penetrating Radar
Seismic Refraction/Reflection
Magnetics
Microgravity
Electromagnetics
Resistivity
Electrical Imaging
Spontaneous Potential
Multibeam Sonar

Metal Detection
Side Scan Sonar
Hydrography
Geoelectric Leak Detection
Induced Polarization
Sub-Bottom Profiling
X-Ray Fluorescence
Acoustic Leak Detection
Borehole Logging and Imaging

APPLICATIONS

Rock Depth/Rippability Mapping
UST / Drum Detection
Utility Detection / Tracing
Well/Water Supply Siting
Fracture Detection
Sinkhole Mapping
Ordnance Detection
Rebar and Cable Mapping
Grave Detection
Contaminant Plume Mapping
Landfill Liner Leak Mapping
Boring Location Clearance
Subgrade Washout / Void Mapping
Seafloor Mapping

Shipwreck Location
Seismic Hazard Studies
Hydrocarbon Detection
Seismic Site Classification
Bathymetric Surveys
Well Characterization
Well Construction Confirmation
Bridge Pier Scour Detection
Archeogeophysical Surveys
Septic System Delineation
Blast and Vibration Monitoring
Detection of Foundation Elements
Water Table Mapping
Buried Landfill Detection

7 REASONS TO USE ENVIROSCAN

- Geophysics is our only product - so we really know what we're doing.
- We own all the gear for all techniques - so we use the right tools every time.
- Since we do only geophysics, we are not your competitor!
- We have 4 licensed PGs on-staff managing or reviewing every project.
- We provide fully electronic / digital / GPS-based mapping and reporting.
- We provide one-stop shopping for land, marine, and borehole geophysics.
- We are WBE - certified.



717-396-8922
1051 Columbia Avenue • Lancaster, PA 17603
www.enviroscan.com



NE-AIPG 2024 PUBLICATION SCHEDULE

Winter Newsletter

January	8	Deadline (Material to Editor)
January	19	Content to Publisher
February	5	E-mail to Members

Directory of Members

February	5	Deadline (Material to Editor)
March	8	Content to Publisher
April	8	E-mail to Members

Spring Newsletter

March	15	Deadline (Material to Editor)
April	1	Content to Publisher
April	15	E-mail to Members

Autumn Newsletter

July	19	Deadline (Material to Editor)
August	9	Content to Publisher
September	3	E-mail to Members

Holiday Newsletter

October	4	Deadline (Material to Editor)
October	18	Content to Publisher
November	4	E-mail to Members

**Please Email News, Info, & Articles
to Kim Burger: kburger@rouxinc.com**

**For Advertising Rates & Info, Please Contact
Dick Young: RYoungNJ@aol.com or
*Cell 203.627.8085***



50 Gear Ave
Lindenhurst, NY 11757

LPS/OSHA/CPR
Certified

Phone: (631) 979-2890
Fax: (631) 979-2891
Email: locator@optonline.net
Web: www.x-raylocating.com

We offer:

- Line Locating
- Ground Penetrating Radar (GPR)
- Video Pipe Inspection (*DVD supplied*)
- Digital Mapping/Reports
- Fault Locating

Short notice? No problem.
Call us and we'll work with
you.

We work on commercial,
residential, industrial and
government properties

We find buried:

- Electric and Communication cables
- Water and Gas lines
- Sewer and Drainage pipes
- Metallic/Non-metallic pipes
- Tanks
- Cesspools/Drywells
- Manhole Covers
- Valves
- Pull-Boxes/Splice Boxes

Our employees are
professional, courteous
and accommodating

Visit our website
www.x-raylocating.com
and fill out our
Mark-out Request Form

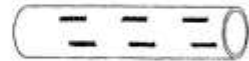
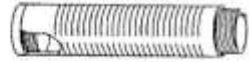




**Atlantic
Screen &
Mfg., Inc.**

Manufacturers of Slotted & Perforated Pipe
ranging from 1/2" to 24" in diameter

- Well Rehab. Products
- Manholes
- Bentonite
- Filter Sock
- Inline Chemical Mixers
- Sampling Bailers
- Clear PVC Pipe
- Locking Caps



302-684-3197
FAX 302-684-0643
 142 Broadkill Rd. • Milton, DE 19968
www.atlantic-screen.com
 email: atlantic@ce.net



COMPLETE ENVIRONMENTAL TESTING, INC.

Contact Robert Blake
 Technical Sales Representative

80 Lupes Drive
 Stratford, CT 06615

Tel (203) 377-9984
 Fax (203) 377-9952
 E-mail: rblake@cetlabs.com
www.cetlabs.com

- Since 1886 -

SAMUEL STOTHOFF CO., INC.

Flemington, NJ

**WATER AND MONITORING WELL DRILLING
 ROTARY -AUGER-CORE-PROBE RIG
 DOWN HOLE VIDEO INSPECTION SERVICES
 HYDROFRACTURING & WELL REDEVELOPMENT
 7 PUMP SERVICE TRUCKS AND INVENTORY OF 400 PUMPS**

**Dick Stothoff
 FAX: 908-782-9528**

**David Lyman
 Phone: 908-782-2116**



HOW DO YOU ACCESS DIFFUSION LIMITED PORE-SPACE?

With **COMPLETE CONTROL** of injection **DIRECTION**, **RADIUS**, and **VELOCITY**.

From the grounds of Space Launch Complex 15 at Cape Canaveral, **BADGER INJECTION SOLUTIONS, LLC** is now servicing the Northeast with kinetically adjustable pore space dilation injection techniques to emplace your selected in-situ treatment amendment.

It's all about **CONTACT**, and the Badger Technology **DELIVERS**.

- DAILY injection volumes average 2,500 GALLONS with injection rates of up to 35 GALLONS PER MINUTE
- TARGET SPECIFIC TREATMENT AREAS using a selection of nozzle arrays (360°, 270° or 180°) with a MINIMUM RADIUS OF 15-FEET
- VARIABLE INJECTION FLOW RATES - essential in allowing amendments to diffuse into limited pore spaces



Environmental Assessment & Remediations is the certified BADGER technology provider for the Northeast.

Contact us **NOW** to coordinate your **INJECTION SERVICES** for 2016!

(631) 447-6400 ext 153
allen@enviro-asmnt.com
badgerinjectionsolutions.com



ENVIRONMENTAL
ASSESSMENT &
REMIEDIATIONS



Providing Critical Environmental Data on Properties Throughout the U.S.

Envirosite's cost-effective government records database and historical property research solutions are used industry-wide for:

- Environmental Site Assessments (ESAs)
- Environmental Risk Management
- Phase 1 & 2 Reporting
- RSRA Desktop Reviews
- Due Diligence



Our solutions provide near real-time data delivery. Receive the environmental information you need – when you need it.

Contact us at 866-211-2028 and reference our NEAIPG newsletter ad for a FREE TRIAL REPORT.



"Quality and Service - the way it used to be."

- Subsurface Exploration
- Geotechnical Engineering
- Geotechnical Laboratory Testing
- Special Inspections
- Construction Materials Testing
- Environmental Services
- SWPPP Monitoring
- Storm Water Infiltration Testing
- Asbestos Abatement Monitoring



1.800.821.5911 • info@sjbegs.com • www.sjbegs.com

Offices in: Albany, Buffalo, Cortland, Jamestown and Rochester, NY

CRAFTSMANSHIP You Can Trust

Put our 65+ years of Experience to the test

Services Offered

- Environmental
- Construction
- Alternative Energy
- Maintenance



Visit us online @

www.islandpumpanktank.com

1-800-458-PUMP

Two Companies have Joined Forces!



ENVIRENT
corporation

**Environmental
RENTAL**

**FREE
DELIVERY**
on rental
orders in
North Jersey

- PID'S
- Water meters
- Dust meters
- Bailers and
much more....

**Now bigger and better
with expanded capabilities
for all your equipment needs
while still providing the same
great personal service you expect.**

10% OFF
your first rental
with postcard

(800) 446-8736 and (800) 219-7368

www.environmentalrental.com

www.envirent.com

**ANGELO TAGLIACOZZO MEMORIAL
GEOLOGICAL SCHOLARSHIP TRUST FUND
LIST OF CONTRIBUTORS SINCE 1987**

(All Contributors, Since Fund Inception Through December 31, 2022)

FRIENDS OF THE FUND
(\$1,000+)

Aquifer Drill ing & Testing, Inc.
Banino, George
Bl auvel t, Robert P.
Dimmick, Charl es Wm.
Kasabach, Haig F.
Kraemer, Curtis A.
Leggette, Brashears &
Graham, Inc.
McGrath, Dennis G.
Northeast Section – AIPG
Patota, Jean M.
(From benefactor)
Proce, Christopher
Rexrode, H. Leonard, Jr.
Roux Associates
Roux, Paul H.
Schiffman, Arnol d
Sl ayback, Russel I G.
Val kenburg, Nichol as
Young, Richard H.

(From contributor)
Brinckerhoff, Laura
*(In Honor of
Frank McCarthy)*
Burke, Michael R.
Con-test Analytical
Laboratory
EcoRental
Gavras, John M.
Graff, Carol S.
Harrington, Jonathan
Long, Dean
Kl eiman, Amy
Mil l er, David W.
Neubeck, Wil l iam S and
Jean M.
Nova Consul ting &
Engineering, LLC
PVE Sheffl er
Rich, Charl es A.
Richter, Dorothy
Rosenfel d, Mordecai
Soil Testing, Inc.

BENEFACTORS (\$500+)

Al l en, Boyd III
(From Patron)
Cascade Drill ing, Inc.
Emerson, Mark
FPM Remediations
Frederick, Jeffrey
Herrick, Dean H.
Higgins, Jonathan B.
(In Memory of Leo Hal l)
Kayl er, Kyl e
Mahier, Luke
(From Patron)
McEachern, Michael
Stone, Timothy S.
Whitbeck, Luanne

PATRONS (\$250+)

Airmag Surveys, Inc.
Al pha Analytical
Anonymous
Becker, Arthur E.

SPONSORS (\$125+)

Al pha Geoscience
Brown, Christopher
Chamberl ain, John Mark
Cl emens, Robert H.
DeAngel is, James
Eggers, J.
ERM – Northeast
Fakunding, Robert
Getchel l , frank
Graham, Jack B.
Greenman, Michael
Heindel , Craig and
Chaves, Judith
Hince, Eric
Koch, El l is
Mathez, Muriel
Pieriboni, John
Prehoda, Wil l iam P.
Schechner, Cl aire and Louis
Scheuing, Laurie

(Contributors continued on page 83)

(Contributors continued from page 83)

Standish, Richard
Stewart, Robert A.
Tsacoyannis, Nicholas
Urban-Mead, Russell B.
Waste Management, Inc.
(Matching Gift on Behalf of
George Banino)

CONTRIBUTORS (\$50+)

Arguden, A. Tefvik
Barish, James M.
Bell, David L.
Bell, Edward S.
Bennington, Bret
Bugh, James
Cain, Kevin
Davis, R. Laurence
Environmental Compliance,
Inc. (On Behalf of
Joseph Torlucci)
Flick, William
Gallagher, Evelyn A.
Hanlon, Kerry
Herman Karpel Memorial Fund
(On Behalf of Friends of
Rhoda Tagliacozzo)
Hnottavange-Tellen, Ken
Hoogerhyde, Kevin J.
Housman, John J., Jr.
Jonathan Paul Associates, Inc.
Kaczor, Sofia
Ketani, Ralph
Mase, David F.
Maslansky, Steven P.
McEachern, Jessica
Mozer, Robert
Neubeck, William S.
Penn, William E.
Rice, John
Rhyner, John
Russo, Luigi
Ryan, Michael J.
Scott, David
Shope, Steven
Siliman, Robert and Roberta
Sparrow, Leslie
St. Germain, Daniel J.
Stokes, Kurtis W.
StoneHill Environmental, Inc.

Tatlock, Derek
Timmons, Robert
Torlucci, Joseph
Tyers, George
Waring, Andrew D.
Wenz, Kenneth P.
Werle, Craig
West, William T.
Weyer, Kelly
Wohlford, Thomas

DONORS (Up To \$50)

Bablin, Christopher
Barbour, Richard and Rose
Becker, Jennifer
Bowes, James
Bradley, Margaret
Busa, Mark D.
Clausen, Jay
Cox, Peter
Faldetta, Sarah
Fournier, Leroy
Fredrick, William T
Gannett Fleming, Inc.
Hager, Jutta
Harwood, David G.
Hergert, David
Hixon, Richard A.
Hulseapple, Scott
King, Daniel
Kowalski, Richard G.
Ross, Lauren and Shelley
Sass, Daniel B.
(In Honor of K. E. Caster)
Shakti Consultants
Sinnott, Joseph
Skehan, James
Speidel, David
Susca, Michael
Vozza, Scott
Wayland, Russell
Weinstock, Eric
Wehran Engineering

***Why Isn't Your Name
On This List?
Solve it!
Simply see Pages 73-74
and then
Move into Action!***

Celebrating 38 Years of Scholarships!

The Angelo Tagliacozzo Memorial Geological Scholarship

The Angelo Tagliacozzo Memorial Geological Scholarship was established by the Northeast Section of the American Institute of Professional Geologists in late 1986. The first Scholarships were presented to undergraduate Geology students in 1987.

The ATMG Scholarship recognizes the dedicated leadership and service which Angelo provided to NEAIPG, to AIPG, and to the geological profession, until his untimely passing on October 11, 1986. The Scholarship furthers Angelo's goal of acquainting young geologists with AIPG and with AIPG's importance to the geological profession.

ANGELO TAGLIACOZZO (1936 - 1986)

Angelo Tagliacozzo received his doctorate in Geology from the University of Rome (Italy) in 1962. Thereafter, he worked in various positions as geologist, geophysicist, and hydrogeologist, which included assignments abroad, in the U.S., and with the United Nations. Angelo provided exemplary service to AIPG at the Section and National levels. He was a Northeast Section Executive Committee Member (1973- 1982), Vice President (1977-1978), President (1979-1980), National Advisory Board Delegate (1981-1982), and Screening Board Chairman (1984-1986). Angelo's dedication to and leadership of the Northeast Section Screening Board has become the ultimate standard against which service in such a position is measured. Angelo also served as an AIPG National Executive Committeeman (1982); he was a vigorous advocate of measures to increase professionalism. Angelo was (and will always be remembered as) a respected professional... and a friend to many.

THE SCHOLARSHIP

NEAIPG grants Scholarships to undergraduate geology students annually. The Scholarships are designed to help with the cost of summer field courses, textbooks, and other aspects of geological education. Scholarships are awarded, on academic achievement and on financial need, to students enrolled in recognized geology programs at colleges or universities located in Connecticut, Maine, Massachusetts, New Hampshire, New Jersey, New York, Rhode Island, Vermont.

YOUR CONTRIBUTIONS

Your participation is encouraged in support of this dynamic memorial to Angelo and his recognition of the importance of AIPG to the geological profession. Contributions to the Scholarship Perpetual Trust Fund should be written to:

The Angelo Tagliacozzo Memorial Geological Scholarship Trust Fund, Inc.
and mailed to:

NE/AIPG Geological Scholarship Trust Fund
c/o Scott Hulseapple
679 Plank Rd, Clifton Park, NY 12065

Alternatively, you can **make your Contribution RIGHT NOW ONLINE**, by simply going to <https://ne-aipg.org/> and clicking "Donation To Scholarship Fund" (under "Quick Links" on the home page).

All Contributions are invested perpetually, with earnings thereon used solely for the Scholarship. NE/AIPG bears all costs of administration. Please ask your employer about matching your tax-free contribution, and additional corporate contributions.

For further information, contact Kelly Weyer:

neaipg.atscholarship2@gmail.com

Memorandum

To: Kelly Weyer, Chairperson, ATMG Scholarship, Northeast Section, AIPG

From:

Date:

Re: *I'm Taking the Pledge: I'M IN FOR 2024!*

Dear Kelly,

This year, I am 100% with you when it comes to achieving the Section's goal of 100% participation in support of the ATMG Scholarship Perpetual Trust Fund in 2024!

I agree with your encouragement that **each and every Section Member make a contribution in accordance with their ability!** Affordable donations from many members, can show a stronger and more united support for the future of our profession and aspiring geologist, rather than relying on the generous support from a few members.

To show my support toward the profession of Geology and encourage aspiring Geologist, you can count me in FOR 2024!

I am committed to contributing, as much as I can, **to give back to the profession that has given me so much. I'M IN FOR 2024**, and I am considering a **tax-free donation** equivalent to \$35 a Week, \$35 a Month, or \$35 for the Year!

Also, I just wanted to tell you I am delighted to know that every one of those hard-earned dollars that I contribute will be INVESTED in the Scholarship Perpetual Trust Fund, so my contribution today can keep on giving, year after year! That makes me feel like my contribution really means something, both now and in the long term!

I have thought it over, and **I know how important 100% participation is to make significant impacts in the lives of aspiring geologists!** So, Kelly, I'M IN FOR 2024, as indicated below.

If I want to add another tax-free donation later in the year, or if I want to pay this donation online, I know that I can visit the Section website at <https://ne-aipg.org> and make a donation at any time.

Professionally yours, _____

At this point in 2024, I am pledging the amount indicated below, and I will provide payment via check, or will pay online at <https://ne-aipg.org/>. I indicated my donation amount and payment method below with an "x" on the appropriate statements:

____ \$35 a Week (\$1820 for 2024)

____ \$35 a Month (\$420 for 2024)

____ \$35 a Year (\$35 for 2024)

____ I pledge to donate the amount of \$_____ (I know that a little bit is better than nothing!)

____ I have physically mailed this letter to you and enclosed my check, made out to "The Angelo Tagliacozzo Memorial Geological Scholarship Trust Fund, Inc."

____ I have emailed you this letter, and I will pay the donation online. If my payment is not received within 30-days of receiving this letter, please invoice me and I will agree to pay as soon as possible, and no later than by 12/1/2024.

Signed: _____

Name Printed: _____

Address: _____

Email Address: _____

Mail this Pledge to: NE/AIPG Geological Scholarship Trust Fund,
c/o Scott Hulseapple 679 Plank Rd, Clifton Park, NY 12065

- or -

Email this Pledge to: NE/AIPG Geological Scholarship Trust Fund,
c/o Kelly Weyer, neaipg.atscholarship2@gmail.com